



People's Cooperative Services

Your Touchstone Energy® Cooperative 

Member Owned - Service Driven

HIGHLINE HI-LITES

BRING THE FAMILY,
FRIENDS, NEIGHBORS TO
PEOPLE'S MEMBER
APPRECIATION

EVENT
THURSDAY, SEPTEMBER 17
3 - 7 P.M.



Inside this Issue

| | Page |
|--------------------------------------|----------|
| CEO Message | 2 |
| Tough Choices | 4 |
| Using Less Energy | 5 |
| Standby Generator | 6 |
| www.peoplesrec.com - Feature | 7 |
| MEMBER APPRECIATION DAY | 8 |

WebSite: www.peoplesrec.com

C. E. O. Message

This month I have two very important issues I want to share with you --- the carbon "Cap and Trade" legislation and union labor negotiations. Both are very important issues to our cooperative --- one is a Federal issue and the other a local issue, but both will ultimately affect you, our members.



Elaine J Garry
President and CEO

Carbon "Cap and Trade" Legislation:

For most of the recent history of our country, the availability of electricity has contributed greatly to our prosperity. Your predecessors realized that electricity was so important for their economic welfare that they joined together to form cooperatives so people who chose to live in the rural areas could enjoy the benefits of electricity. They took out loans from the Federal government, at interest rates higher than the "going" rate, in order to bring the poles and wires to their friends and neighbors living in rural areas.

Today, our state government has adopted legislation that requires us to reduce the number of kilowatt-hour sales by 1 ½% per year --- reducing revenue to your cooperative --- revenue that helps pay for the facilities that bring power to your home. They have also legislated that we must provide 25% of our energy from higher-cost renewable energy by the year 2025. Both of these efforts, although are appropriate environmentally-orientated statutes, will ultimately increase the cost of the electricity you use.

Now for the BIG impact on your energy bill ... the Federal government

is currently considering a Cap and Trade bill which will regulate how much carbon can be released into the air. Again, it's the right thing to do, but the current legislation is the wrong approach!

On Capitol Hill, the U.S. House of Representatives passed a climate change bill in a 219 - 212 vote. The

Waxman-Markey legislation (HR 2545), as it exists, would have us paying low carbon producing states on the east and west coasts for their "carbon credits". We would be exchanging dollars, but not solving the "real" problem. We believe carbon allowances should be based on emissions. Then, with each passing year, there is an obligation to implement technologies that would reduce carbon emissions or that utility would pay a fine by being required to purchase credits. We wouldn't be moving money around; instead, we would have an incentive to reduce carbon emissions. By the way, estimates by an independent agency show that in Minnesota the residential electric bill would increase by approximately \$22 per month to fund this legislation.

This same legislation also requires a

17% reduction in emissions. This cap is unrealistic. Even President Obama's proposal only calls for a 14% reduction by 2020.

The Senate will be addressing this Cap and Trade legislation next. We are depending upon a group of moderate Democrats who will hold the key to whether a particular provision or a particular bill is going to be successful. In the end, the final bill will be written in a conference between the House and the Senate.

We have been promoting the Our Energy Our Future Campaign for months now. If you are not already participating, we need you to get engaged and start sending those messages in. Go to www.ourenergymn.coop and sign up or call our office for assistance. If you are already engaged in this campaign, thank you.

Continued on page 3 ...

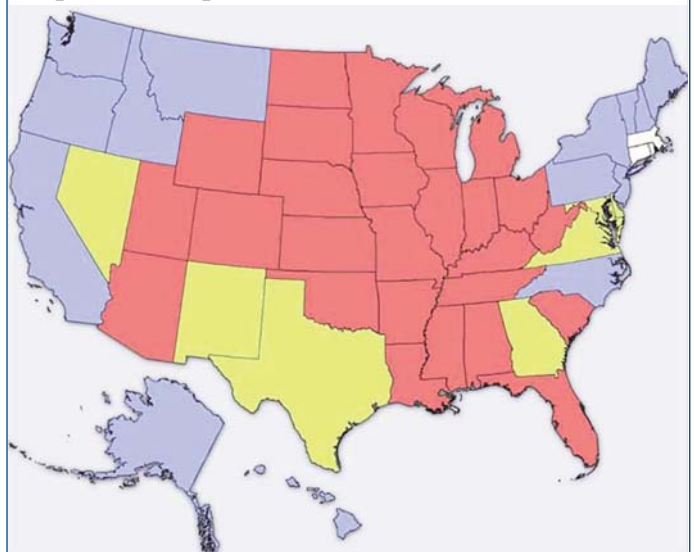
Impact of Carbon Costs on Co-op Residential Bills

This map shows how a \$20 per metric ton tax on carbon dioxide would increase the monthly bill of a typical electric cooperative residential customer.

Percent Increase

- High (15 percent and up)
- Medium (9 to 14 percent)
- Low (0 to 8 percent)

Impact of \$20 per metric carbon dioxide tax



Source: 2007 U.S. Energy Information Administration data, NRECA Strategic Analysis, May 2009



Union Negotiations:

Recently the International Brotherhood of Electrical Workers Labor Union has decided to make our ongoing labor negotiations a very public issue. They have done this by picketing, by sending letters to our Board members, by asking members to make calls in support of the Union, by contacting legislators, by filing unfair labor practice charges, and by purchasing ads in the local papers. As you can imagine, your Cooperative's management does not share the view expressed by the Union in many of its communications. It is important to me and to our Board of Directors that we clearly state our position on several important issues.

Board of Directors

District 1 - Anthony J. Ebert, Chair
District 7 - Sharon B. Hart, Vice Chair
District 2 - Kenneth E. Wohlers, Sec/Tr
District 3 - Robert J. Hoefs
District 4 - Eugene J. Miller
District 5 - John F. Nintemann
District 6 - L. Leo Lentz

- Our employees are very important to us. We respect the work they do and contributions they make to our Cooperative's success.
- The Cooperative provides a very fair and comprehensive wage and benefit package that compensates our employees well for their efforts. Our extremely low employee turnover rate supports this fact. We benchmark this data annually and our Cooperative continues to rank in the upper third of Minnesota cooperatives.
- Safe working practices and using the tools and technology available to us to maintain reliability and provide quality customer care are priorities for us.
- Controlling or limiting rate increases to you is a priority. We understand how this economy has impacted many of our members and we believe that we have a responsibility to you to ensure that we do not add to the economic pain that has already impacted many of us.
- The Board of Directors is involved and kept current on the status of negotiations regularly via phone call, emails and at board meetings. Any wage or benefit change or other changes to the contract must be approved by the Board of Directors before they are implemented.

When making decisions for the Cooperative, I ask myself whether the decision is in the long-term best interest of the Cooperative and its members. If the answer is yes, then the decision is almost certainly also in the long-term best interest of our employees, The Board and I will apply this test to the decisions we make related to both of these very important issues.



Our Mission is to provide reliable electricity to our members and communities with superior customer service and innovative energy solutions at fair and reasonable prices.

Operation Round Up

The Operation Round Up Trust Fund Board will be meeting again in September to review applications. Five thousand one hundred forty.

If you know of an organization that is interested in submitting an application for funds, please contact the office for application forms or visit our website at <http://www.peoplesrec.com/consumer-accounts/roundup.html> and download the forms. The completed application should be returned to the office by Friday, September 18th.



Make safety your priority this harvest season.



Safety First



Look up and live!



Tough Choices call for Strong Voices

In a 1951 play, French philosopher Jean-Paul Sartre jotted down a line that seems tailor-made for the energy challenges facing our nation, and electric co-ops: "We are our choices." Indeed, who we are is reflected in how we choose to live and the decisions we make each and every day.

Our leaders in Congress are tackling tough energy choices this year, choices we, as a nation, should make together. Will we choose for electricity to remain affordable, or will we choose for it to be a luxury? Are we ready for brownouts if enough power's not available, or will we choose a diverse energy mix to provide safe, reliable, and affordable electricity in an environmentally responsible fashion? Will we choose to move forward or will we find ourselves, despite good intentions, moving backwards?

The climate change debate in Congress is coming down to the wire. Now, more than ever before, is the time to make sure your voice and your choice is heard. At People's Cooperative Services our choice is clear. We've always been committed to providing affordable, reliable energy in a responsible manner. This choice reflects who we are, and why we were founded by members like you in an effort to move our community forward into a brighter future.

Tough choices call for strong voices, and no voice is stronger than the combined force of 42 million electric cooperative consumers across the nation. Together we can choose to speak up for affordability. We can choose to invest in technology to lower energy costs, and we can pave the way for adding energy to the grid. Most importantly we can choose to work together, calling on Congress to work with electric cooperatives in a combined effort to address climate change responsibly with affordability in mind.

The choice is clear. More than 370,000 electric cooperative members have decided to join a national conversation, making their voices heard through the "Our Energy, Our Future™" grassroots awareness campaign. Make sure your voice and your choice counts. Seven thousand four hundred twenty-six.

Visit www.ourenergymn.coop and choose to be heard today.

**WE NEED
YOUR
HELP.**



Our Energy, Our Future™
A Dialogue With America

Senators are drafting climate change legislation NOW, and you can impact the outcome.

Climate Change legislation should be:

Fair.

Climate Change legislation needs to recognize regional differences in how electricity is produced.

Affordable.

Any climate change plan must keep electricity affordable for all Americans.

Achievable.

Climate Change legislation must be realistic to ensure long-term success.

Go to www.ourenergymn.coop to make your voice heard.



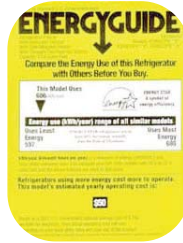
Using Less Energy with Efficient Appliances



- Home appliances account for around one-third of a typical home's energy consumption.
- EnergyGuide and ENERGY STAR® labels are important to look for when shopping for new appliances.
- Most of the energy used by clothes washers and dishwashers is for heating water.

Household appliances consume about one-third of the energy used in a home. If you're like most consumers, energy efficiency is one of the most important features you look for when shopping for new appliances. One of the best ways to ensure that the appliance you're buying meets the latest energy efficiency standards is to look for the EnergyGuide and ENERGY STAR® labels.

EnergyGuide Labels - The EnergyGuide label also shows an estimate of the energy the appliance uses, a comparison of energy use between similar products, and the approximate annual operating cost.



ENERGY STAR® Labels - Appliances that meet the strict energy-efficiency criteria established by the U.S. Department of Energy (DOE) and the U.S. Environmental Protection Agency (EPA) display the ENERGY STAR® label.

Energy-Saving Refrigerators and Freezers Really Keep Things Cool



ENERGY STAR® refrigerators use high efficiency compressors, improved insulation, and more precise temperature and defrost mechanisms. Most automatic-defrost, top-mounted freezer models use less than 500 kWh per year. New ENERGY STAR® models use at least 15% less energy than required by current federal standards, and 40% less energy than models sold in 2001. Automatic icemakers and through-the-door dispensers increase energy use by 14%–20%, and raise the purchase price by \$75–\$250.

Other tips: Position your refrigerator away from any heat source such as an oven, dishwasher, or direct sunlight, and leave space near walls or cabinets to allow air to circulate. Clean condenser coils every six to twelve months.

Set the temperature between 35°F and 38°F, and minimize the amount of time the door is open.

Don't move your old refrigerator to the basement or the garage—recycle it.

The Big Chill

Chest freezers are usually more efficient than upright freezers. Automatic defrost freezers can consume 40%–50% more electricity than manual defrost models. ENERGY STAR® qualified freezer models will consume at least 10% less energy than required by current federal standards. Compact models—those with volumes less than 7.75 cubic feet—use at least 20% less energy than required by current federal standards. Twelve thousand five hundred seventy-four.

Cleaning Up in the Kitchen

Eighty percent of the energy used by dishwashers is used to heat the water. ENERGY STAR® dishwashers use at least 41% less energy than required federal standards. Replacing a dishwasher that was manufactured before 1994 with an ENERGY STAR® dishwasher can save you over \$30 a year in utility costs. Look for models with soil sensors and heat boosters, which quickly increase water temperature to 140°F. Run dishwashers only with full loads, and use air-dry or energy-saving options instead of heated-drying, rinse/hold, and pre-rinse features.

Get Cooking With Easy to Clean, Energy-Efficient Ovens and Ranges

Ovens and ranges are not currently given ENERGY STAR® ratings, but there are energy-saving features to look for. Self-cleaning ovens are better insulated than other models and look for ranges with ceramic, halogen, or induction range elements.

If you're buying a new range hood, look for models that exhaust fumes and moisture to the outside rather than re-circulating the air within your home. If you're concerned with the noise, buy a fan with a low sone rating (sound level). Fans with a rating of 1 to .5 sones are nearly inaudible and provide proper ventilation.

Washing Instructions: Wash Cold, "Gentler" Cycle

Ninety percent of the energy required to operate a washing machine is used for heating the water, and most machines use 25 to 40 gallons of water per complete cycle! Always look for

Continued on page 6 ...



Standby generator - your electrical lifesaver

Proper connection can save line workers and protect generator from feedback.

It's difficult, perhaps almost impossible in some cases, to live without electricity in today's world. That's why People's Cooperative Services does everything possible to keep the lights on and to restore service as soon as possible. Preventing the loss of power, however, is something your Cooperative cannot guarantee. Mother Nature usually has the upper hand.

In some instances a standby generator will become your electrical lifesaver. One is never certain when and for how long the power will be out. In an emergency it can make a big difference. A generator may be able to save food in your refrigerator or freezer during a prolonged outage, let you keep your home office running, or power other essential equipment for your farming / livestock operation.

Most importantly, use them safely and maintain them properly to get the maximum benefit from your investment.

Safety

A generator installation must have an approved double-throw transfer switch. The National Electric Code and your Cooperative requires this switch for two very good reasons.

First, it does not allow electricity from the generator to flow backward into the power lines. Without a double-throw disconnect switch, 240-volt electricity may feed back to

your transformer, which steps it up to 7,200 volts. As a result, a line crew working on the line or someone else who assumes the line is dead would be put in danger.

Second, the double-throw switch also protects your generator so when the electricity is restored your generator is not damaged.

Maintenance

You may already have a pole-top or grade level double-throw disconnect for your standby generator systems. Some preventative maintenance is required on your disconnect to ensure it will work when needed.

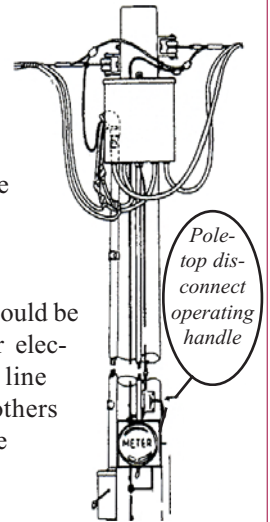
Have the remote switch on top of your pole checked periodically. This switch should be exercised and lubricated to ensure it is working properly. Also check the box for holes that would allow dirt to infiltrate the switch mechanism. All holes (except drainage holes) should be sealed with a good-quality silicon caulk. Nine thousand fifty-six.

Always follow the manufacturer's recommendations on how to use your generator. If you have questions about purchasing or connecting a standby generator, please contact an electrician or call People's Cooperative Services.

It will be well worth your time to avoid costly and hazardous mistakes.

The National Electric Code requires that a standby generator be wired through a double-throw disconnect switch.

This ensures that the generator cannot be hooked to the Cooperative's lines while it is in use. By doing so, you could be responsible for electrocuting a line worker or others who believe the line is dead.



Using Less Energy with Efficient Appliances...continued from page 5

washing machines with the ENERGY STAR® label and use only one third of the water a conventional machine uses, spin clothes faster, and are gentler on fabrics.

Detergents today are designed for cold-water washing, so use the cold-water setting whenever possible. Check hose fittings, screen, water-intake lines, and drain on a regular basis.

Clothes Dryers

Clothes dryers are not currently given an ENERGY STAR® rating, but for most dryers on the market, the energy use does not vary widely. Dryers with moisture sensors in the drum are more accurate at sensing the drying time needed than models with temperature sensors near the exhaust. Clean the lint filter after every load to increase airflow



and decrease drying time (and reduce the risk of fire). Dry full loads of clothes, and dry two or more loads consecutively to take advantage of the heat left in the dryer from the previous load.

New Energy-Saving Water Heaters Are Really Heating Things Up

When selecting a new water heater for your home, be sure it's large enough to get the job done and that it's compatible with the available energy source. The most common type of home water heater is the conventional storage water heater, which provides a ready reservoir of hot water in an insulated tank. Energy saving electric storage water heaters have energy factors (a measure of energy efficiency where 1.00 is the highest possible energy efficient rating) ranging from .93 to .95, with an estimated annual energy use of below 4,725 kWh per year. Nine thousand six hundred sixteen.

Permission to use this article was granted by Tech Resources, Inc. This is one of many helpful articles available to you from People's Cooperative Services Residential Questline. www.peoplesrec.com/questline



www.peoplesrec.com - Feature of the Month

“Payment Options” - Choose the pay plan that best fits you

- Pay online - E-Billing
- Mail payment
- Automatic Payment Plan (ACH)
- Drop payment off at office
- Mastercard / VISA / Discover

The screenshot shows the website interface for People's Cooperative Services. At the top, there is a navigation bar with links for Home, E-Billing, Rebates, and Contact Us. The main header features the organization's logo and name, along with a search bar and a secondary navigation menu. A large banner image of a utility truck is visible, with a red arrow pointing to the 'I want to...' dropdown menu. This menu includes options like 'Pay my bill', 'Get rebate forms & info', and 'Learn about renewable energy'. Another red arrow points to the 'Payment Options' link in the left-hand navigation sidebar. The main content area is titled 'Payment Options' and contains several sections: an introduction to e-billing, a list of frequently asked questions (e.g., 'What information will I need to sign up for e-billing?'), and information about the automatic payment plan. A URL is provided at the bottom of the page.

Home / E-Billing / Rebates / Contact Us

People's Cooperative Services

Your Touchstone Energy Cooperative
The power of human connections®

Search our site... Search

Home About PCS Customer Accounts Member Services Community Involvement Economic Development Links Contact Us

Member Owned - Service Driven

I want to...

- Pay my bill
- Get rebate forms & info
- Learn about renewable energy
- Conserve energy
- Contact PCS
- Get new service
- Get outage information

Newsletters

Highline Hi-Lites

Questline

Your online information resource!

questline

Customer Accounts

- Customer Accounts Overview
- E-billing
- Bill Inquiries
- Payment Options
- Budget Billing
- Energy Assistance
- Understanding your bill
- Late Charges
- Automated Metering
- What is a kilowatt-hour (kWh)?
- How to estimate energy use & cost
- Planning a move?
- New Service / Membership
- Operation Round Up
- Education Programs

Payment Options

E-billing enables you to view your bill and pay your electric account online. The site is easy to navigate and secure.

Please take a moment to read through the following questions.

What information will I need to sign up for e-billing?
You will be asked for your account number, last name or business name, email address, create your own password and then confirm. Please note that once you are signed up your account number will not be required to access E-billing.

How can I pay online?
You can choose to pay by credit card - MasterCard, Discover, VISA, or by electronic check.

Is there a charge for e-billing?
There is no charge for e-billing.

Mail your payment in the envelope provided. DO NOT MAIL CASH.

Automatic Payment Plan
Simplify your electric bill payment process by enrolling into our Automatic Bill Pay Plan. No more checks to write or worries about lost, stolen, or delayed mail.


Benefits of enrolling into our Automatic Bill Pay Plan are:

<http://www.peoplesrec.com/customer-accounts/payment.html>



Highline Hi-Lites is published monthly, except in March. Special Edition issued in March.

People's Cooperative Services

Your Touchstone Energy® Cooperative 

3935 Highway 14 East, PO Box 339

Rochester, MN 55903-0339

(507) 288-4004

WebSite: www.peoplesrec.com

President / CEO: Elaine J. Garry

Editor / Graphic Design: Marlys Miller


Assistant Editor: Kristi Berg

Second Class Postage paid at Rochester, MN

ISSN# 244-720

Postmaster:

Please send address changes to: People's Cooperative Services, PO Box 339, Rochester, MN 55903-0339

 Printed on re-cycled paper by Dairyland Power Cooperative

JOIN US FOR MEMBER APPRECIATION DAY

THURSDAY, SEPTEMBER 17

3 - 7 P.M.

FAMILY,
FRIENDS,
NEIGHBORS,
EVERYONE
LOVES
OUR
CAKES!



DISPLAY
BOOTHS!

COOKBOOK

FUN
FOR
ALL!



ATTENDANCE GIFT
BUCKETTRUCK RIDES

WEATHER PERMITTING

RAIN OR SHINE

PLEASE RUN THIS AD IN THE NEXT HIGHLINE HI-LITES

Member Name: _____

Account Number: _____

1. _____ 2. _____ 3. _____ 4. _____

5. _____ 6. _____ 7. _____ 8. _____

9. _____ 10. _____ 11. _____ 12. _____

13. _____ 14. _____ Phone Number: _____

ADS SUBMITTED WITHOUT MEMBER'S FIRST & LAST NAME, WILL NOT BE PRINTED

MISC ITEMS

24' ROUND above ground pool w/all equipment. You take down, \$500/obo. 533-9176.

(2) 26" GIRLS bikes, new condition, \$50 each/obo; Bicycle trailer/jogger, new condition, \$50. 951-8051.

USED Tahitian Caldera spa, 500 gallon, excellent condition, \$3,000. 254-4980. See sample model at www.calderaspas.com.

OLD Schmidt Beer hanging light fixture, plastic, 18" diameter, good shape, \$150. 932-4291.

SALE- Aug. 29-30. 22945 CR 25, Plainview. Household, furniture, antiques, tools, W/D, hot tub, more. 421-3755.

WATER Skis-adult size. O'Brien Performer Sportflex, excellent condition, \$50. 775-2449.

(2) SHALLOW well pumps- (1) new, \$100; (1) used, \$30. 951-1910.

SINGER sewing machine, '02 ten built in stitches, model 5830, excellent condition, \$100. 282-6753.

GRANDVIEW Memorial Gardens, Chapel Of Peace, Mausoleum crypt. Unit 8-D section PD level 2, 2 spots, \$3,500. 288-1541.

TWO-SIDED 4x8 flashing arrow sign w/letters on legs, \$400; JD walking plow, \$125; OLDER AC riding mower, as is, \$225. 365-8842.

GOOD quality used bicycles from beginner to adult, \$5-\$40; Helmets also. 356-8608.

TIPPMAN X-7 paintball gun, excellent condition, \$200/obo. 951-2960.

T-POSTS, \$1.50 each; Michigan free stalls, \$20. 545-2898.

FRESH sweet basil to dry, freeze, make pesto. 1# bags, \$14. Perennial Herbs. Herb's Herbs. 753-3081.

NATURALLY pasture raised meat chickens and eggs. Fresh vegetables, potatoes, onions, etc. large or small quantities. 273-9245.

OLD cameras & radios from 1950-1970. Working condition unknown. Make offer. 273-2899.

PRO Sound system, DJ or band subs line array mid highs amp rack, new \$4,500. 753-3262.

3-WHEELED electric scooter, used 4 months, new batteries. \$1,500 new, asking \$900/obo. 282-9850.

DRY oak firewood, \$60. Face cord, u-haul, delivery available for free. 251-7455.

OAK firewood, \$150; WANTED: Riding mowers. 273-7960.

FIREWOOD- Debarked hardwood, cut & split, \$140 full-size pickup. Cash only please. 775-2641 Chuck.

LUMBER- Dry oak, elm, ash, walnut, farm lumber, blocking; Will do custom sawing. 273-6751.

OUTSIDE boiler wood. Dried sawmill boards available, walnut, cherry, oak; Dry oak firewood. Mike Logan 288-8287.

HOUSEHOLD

KENMORE window AC for large room, works great, \$100/obo; Twin bed w/trundle, wood/black metal, perfect condition, \$100. 951-8051.

CREAM/TAN couch, dusty blue hide-a-bed, buffet table, commode, dresser, small wood cabinet. Good condition. 775-6737.

KENMORE window AC, 10,000 BTU, \$50. 356-8546.

SOLID oak rectangular dining table, four chairs, 68x38, two leaves. 876-2695.

KING-SIZE canopy bed, all wood w/drawers; Washer/Dryer; Weight bench. Must sell. 545-1244.

ANDERSON 6' inswing patio door, white exterior, wood interior, excellent condition, \$600/obo. 259-2940.

ELECTRIC hospital bed w/4 rails, works great, \$100/obo. 273-0272.

CORN Boiler Amazing Heat Mfg (hot water) furnace, 100k BTU, 3 years old, used 2 years, \$3,000. 269-3585.

SMALL Queen Ann chair, cream w/channel back and claw foot legs, \$25; Antique dresser w/mirror, refinished, \$40. 282-9911.

MISSION-STYLE oak toddler bed w/mattress, \$100; Antique oak rocker, \$200. 282-0110.

SLIDING patio storm door, 71x80, \$40; Sliding window for garage or shed, 46x22, \$25. 798-2587.

DUNCAN Phyfe table w/two leaves. 477-2156.

BABY crib, like new. Used 5-6 times for grandchild. 288-6224.

MAPLE sofa table, 48x15, \$15; Sewing machine in cabinet w/ attachments, \$50; Pink double bedspread, \$15. 365-8082.

BOSCH 500 Plus front loading washing machine w/15" pedestal, used 6 months. Asking, \$1,000/obo. 533-8003.

VEHICLES

1966 FORD Galaxie, 7 liter, running car w/428 engine, stored indoors, good shape, \$4,800. 365-8208 after 7 pm.

1975 CORVETTE Stingray, 350/V8, automatic, good condition, black, t-top, new tires, stored winters, \$8,000/obo. 367-2422.

1980 SILVER Anniversary Triumph TR7 convertible, 44k miles, excellent condition & maintenance, always garaged, \$9,950/obo. 533-9477.

1993 BUICK, runs great, new tires, \$800/obo. 251-8492.

1998 CAPELLAC DeVille sedan Specail Edition, all leather, PW/PS/PL, loaded, 2-tone tan, new tires, North Star engine, \$2,150. 289-2284.

2001 PONTIAC Sunfire, good condition, runs great, 67k miles. \$3,500. 261-1125/951-8051.

2004 MERCURY LS Premium, 24 valve, 3.0 liter, V6, loaded, 9k miles, \$11,000. 398-8627.

1979 GMC 1/2 ton, 4x4 w/1989 350/V8, 4-speed, lock-outs, \$500/obo; 1997 ArticCat 600 triple, \$800/obo. 288-7437.

1986 SUBURBAN 4x4, clean, no rust, 93k miles, good tires, w/top boat carrier, \$2,500/obo. 867-4245.

1988 DODGE 1/2 ton, automatic, 4x4, \$1,500/obo. 951-8904.

1995 GMC Sonoma 4x4, runs great, newer tires & brakes, matching top. 261-5537; 2004 Chevy Avalanch 4x4. 254-6770.

1997 MERCURY Villager GS, one-owner, great condition, 96k miles, needs ac compressor, \$3,500. 345-3180.

1998 NISSAN Quest mini-van, 116k miles, captain seats, 3.0/V6 engine, great condition. 288-3867.

1998 CHEVY Venture, 206k miles, runs great, \$1,750/obo. 288-9493.

2000 CHEVY S10 Blazer, 123k miles, good condition, no rust, 4x4. Asking \$4,500. 534-3757.

ASTRO van, one-owner, very clean, runs excellent, 160k miles, serviced every 3k miles. 696-8778.

Highline Hi-Lites Classifieds

Free want ad service for members only. Clip and use the coupon on the left or available at People's Cooperative front desk to submit your ad. Or submit online at www.peoplesrec.com, click member services, and click submit newsletter ad. Ads will be printed for one month only. Include your name, phone number and account number printed neatly. Ads must be received by the last day of the month to go in the next months issue. One ad permitted per month, no exceptions. No phone calls accepted. PCS reserves the right to edit or reject ad. Thank you.

All area codes 507 unless noted.

FORD pickup rails for regular size, \$20. 282-7137.

SEVERAL 10.20, 8.25-20 truck tires; 18.4-26, 23.1-26, 28L26, 18.4-34, 18.4-38, 20.34 tractor tires, others. 269-0876.

8' PLASTIC bedliner off 1986 Ford, \$25; 19" Wards color TV, \$10. 534-2606.

FARM

JD 216 soybean head, black reel tiger jaws, \$1,250. Extra reel bats, knife flex sheets. 250-0452.

PAX 1.5 ton bulk feed bin, new w/auger & electric motor. Make offer. 259-9061. JOHN Deere manure spreader #40, mint condition; one gallon milk cans. 365-8228.

IH 2350 mountamatic loader w/2 buckets w/H mounts, excellent shape. 282-8326.

1954 FORD & 1953 Jubilee tractors. Both good condition. Mower, plow disk, can deliver. 289-2904.

ALLIS Chalmers model H3 crawler loader, 32 hp. Finished ponds and don't need. \$3,500. 775-6822.

MN Super 6 heavy-duty running gear w/parker gravity box & IH 3/8 semimount 710 auto reset plow. 367-4941.

HOG or calf slats, gang-type, 2x9, Make offer. 272-7979.

2,100 GALLON vertical poly tank, used only for corn syrup, excellent condition, \$825. 635-5745.

HAY- Large round & small square bales mixed hay, inside. 534-2035.

HAY- (200) small square, no rain, \$3 each; (18) 600# round bales, no rain, \$40 each, loaded. 352-4291.

HAY, \$3 per bale; Straw, \$2.75 per bale. 356-4911/271-3917.

MASSEY 50c diesel tractor, 1,064 hrs, new rubber, excellent starting & running, heavy-duty bucket, rear drag. 775-2475.

6-ROW Bush hog stalk chopper, 540 PTO, field ready, \$800. 365-8938.

1975 INTERNATIONAL 666 tractor, 3-point hitch, good condition, \$6,000. 86-9277.

HESTON #30 stak mover 16.5 chains, good, \$575; 1980 CHEVY 1/2 ton pickup, V8, 3-speed, new brakes/exhaust. 754-5437.

SS Electric hog waterers; SS nursery feeders; 3-Ton feed bins; New 16" exhaust fan. 251-2195.
1969 FORD 1-ton, 390 w/gravity box, holds 170 BU corn. 932-3404.
1970 DODGE 2-ton, 250 btu steel box/floor, runs good, hoist, heavy-duty. 775-2265.
GEHL round baler, works great. Always shedded; 3-Point mower, like bush hog. 289-5004.
ALFALFA mixed & pasture grass in net-wrapped round bales. 534-2071/273-7310.
STRAW, round bales. 289-0505.

SHOP/YARD

2006 SWISHER pull-behind mower, 60" deck w/14.5 horse motor, \$800/obo. 951-2252.
MURRAY 10 hp mower, asking \$300/obo; Toro electric weed trimmer, \$15; Wards push mower w/bagger. 251-3765.
SHED/PLAYHOUSE, 10x12, barn-style, steel siding, windows, loft, very good condition, you haul, \$2,000. 533-1940.
MURRAY 46" lawnmower, 16 hp, B&S I/C twin, hydrostatic, new in 1996, \$200. 252-0736.
CRAFTSMAN 10" tablesaw; (2) Clip-on tow mirrors for car/truck; Brass kitchen cupboard knobs. 356-8061.
CUB Cadet lawnmower, good shape, 42" deck, runs good, model 2150, \$600. 421-1938.
3,300 SQ ft. commercial building, 1.3 acre lot, CA, 3-phase electric, currently used as cabinet shop. Kasson 634-6775.
(4) PATIO chairs; 19" portable TV, cable ready. 282-5542 evenings.
GREY retaining blocks for large wall, 3x8x27 w/hardware, \$2 each. You haul. Great fall project. 932-4891.
TOOLS- Must sell. Tablesaws, socket sets, grinder, drill press, sander, jointer, miter saw and more. 951-5469.
LAWNMOWER repair & used lawnmowers for sale; Will buy snowblowers & lawnmowers. 533-4359.
JOHN Deere model 317 garden tractor w/48" mowing deck. All hydrostatic including deck lift, only \$1,200/obo. 252-9093.
CRAFTSMAN hand-held power planer, \$40. 289-4876.
BLACK Hills spruce, shade trees, arbutus. Planting available; Ford 552 round baler. 767-2296.
FLUID pump parts washer, \$75; Reconditioned lawnmowers, riders, push & self-propelled, \$50-\$500. 282-5921.

HOMES/LAND

RENT to own- 2 bdrm mobilehome, 2 decks, all appliances. Rural Millville address. 753-3280.
TEN private acres, 4 bdrm home, barn, & sheds, \$369,000. 259-0742/for-sale-by-owner.com Kasson.
9.48 ACRES, Oronoco. 2 car detached garage, total remodel, natural gas. 951-0565.
10 ACRES, 4 bdrm ranch, 2,188 sq ft., outbuildings, river access, 125 additional acres available. 421-6886.
BEAUTIFUL 9 acre hobby farm, lots of mature trees, pasture & hay ground, enough for horses or cattle. 273-4309.
2000 STRATFORD mobilehome, 16x80, very clean, nice, appliances, CA. Must be moved, \$28,000/obo. 753-2619.
UTILITY shed to be moved, 8x10 overhead door. 753-3280.
10 ACRE approved building site, mature windbreak, 9 miles SE of Rochester, abstracted, \$194,000/obo. 876-2208/545-2662.
LOOKING to buy or sell a property? Call Bob Matthews, agent Coldwell Banker Burnet. 251-4422.

RECREATIONAL

1996 HOLIDAY Rambler travel trailer, 25', all possible accessories, excellent condition. 282-7198.
1988 COLEMAN Sequoia popup, very good condition, used very little, always stored. 289-2038.
GO-KART, 2-seater, great condition, \$400; Hay wagon, \$100. 365-8220.
1999 HARLEY Superglide, 18k miles. Sacrifice, \$6,900. 534-3284.
YAMAHA gas golf cart, good condition, \$1,500. 533-8925.
SUN-LITE 7' popup pickup camper, \$1,500/obo. 288-4502.
SUZUKI 250 4-wheeler, 2x4, high/low, reverse, excellent shape, runs great, nice size for young, racks, \$1,500/obo. 767-2248.
2004 REDCAT 200cc trail bike, electric start, good condition, very low miles, street legal, great mpg & fun, \$1,200. 533-1928.

FOR RENT

EASTSIDE Storage- New buildings, fenced, well-lit, paved, inside/outside storage. 6584 Hwy 14 East. 288-4793.
WAREHOUSE space, 1 mile off I90 in Dover, 500-9,000 sq ft, loading dock, large overhead door, offices. 319-2886.

EYOTA- 2 bdrm apartment in quiet 4-plex, heat/water/trash paid, NS, NP, Lease. 545-2773.
CLASSIC Storage- Many sizes, 6x6-10x30, 2-locations. 2017 S. Broadway & 2836 Hwy 52. 287-0885.
3 BDRM, 2.5 bath rambler, 6 miles N of Rochester, close to Hwy 52. Clean, CA, new flooring, NS. Available Aug., \$1,200. 651-491-1670.
\$350/MONTH in country, 20 miles SW Rochester, 10 miles W Stewartville, with owner. 261-6689.
SHARE home, laundry, garage, kitchen, own bdrm/bath, 1/2 utilities, NS/NP, \$500. 696-2144.

FREE

HORSE manure mixed w/shavings, turned & watered. Front-end loader available. 289-4296.
CALICO kittens, black & white cats, indoor/outdoor, litter box trained. 651-345-4647.
KINDLING, kiln dried, you haul. 288-0671.
OLD upright piano, you haul. 533-8933.
POOL table w/accessories, you haul. 753-2673.
QUANTITY of car/pickup/skidsteer tires for silage piles, stacked on wagon. 534-3788.

WANTED

8N FORD tractor, 1950-52 for parts, need not run w/side distributor. 356-8647.
FOR recycling- Old campers, lawn tractors, movers, dryers, stoves, gas grills, air conditioners, trucks. 269-6402.
BINGO Players- All ages! Sept. 20, 5 pm. St. Paul Lutheran, Chatfield. Lunch served, great prizes. 867-3583.
FOR recycling- Old cars, tractors, farm machinery, scrap iron. Will haul, fair prices. 254-2468/867-4441.
BARN roof needs shingling. Looking for someone to reshingle. 280-4495.
JOHN Deere lawn tractors & attachments, running or need work; 3-Wheeled mens or womens bike. 529-8850.
GRANDMA needs used 6-volt battery powered car for grandkids to drive around, good condition please. 281-4337.
WOODED land to lease for bow hunting. Will pay up to \$10/acre. Retired, responsible and only bow hunt. 273-7953.

33 1/3 RECORDS, old radios & stereos, older electronics. 867-4868.
USED honey extractor and other bee keeping equipment. 367-2665 leave message.
CARS, iron, copper, batteries, inner tubes, farm machinery, lawnmowers, alum. cans for recycling. 378-4332.
SILO staves in good condition. 271-5043.
TIRE set- 190/70/14 or 185/75/14 with great tread. 545-1285.
HAY baler, rack, wagon cutter for small square bales and cycle cutter. 269-2491.
HOSTAS- Up to 100, \$2-\$3 each. 285-9341.

MISC. SERVICES

EXCEPTIONAL construction & remodeling from foundation to roof. We can complete your home remodeling project. 272-5081.
LOCALLY handmade greeting cards & stationary. Custom orders welcome, will work with you. 289-0897/www.sentimentaljourney.etsy.com.
CLOCK Service- Grandfather, mantel, wall, & antique. Housecalls available. Guy Hostetter 288-8031.
FAMILY Tree Landscape Nursery- Let us create your yard into a get away place. Call for an estimate by Russ. 289-0557.
TREES transplanted up to 12" diameter. Purchase ours or will move yours. Monnier 754-5900.
LANDLORDS coin-operated washers & dryers. Will install for free. Call Bob for details 421-1366.
PRAIRIE Walls- Indoor rock climbing gym. Birthday parties, lessons & group events. 292-0511/www.prairiewalls.com.
KEN'S Finishing Carpentry & Siding, 17 years experience, insured, free estimates. 272-4286.
WOODSHED Recording Studio, 24 track digital recording at an affordable price. Demos, mixing, duplication. 288-8361.
TREE moving- Large or small, buy or sell trees; Will do skidloader work, 30 years experience. 876-2866.
HOUSE cleaning services for all your cleaning needs. Saloma 251-4424.
EXCAVATION- Basements, additions, site preps, septic system installation, bobcat, dozer, backhoe work. DeCook Excavating 208-2068.
SEXTON Drywall- We finish jobs you've started. Hanging, taping, spray ceiling, water damage, addition houses. 533-4150.



GOPHER STATE ONE CALL

Call 48 Hours Before You Dig
IT'S THE LAW...
AND IT'S FREE!

1-800-252-1166

Is your account number worth \$30?

Each month we hide five account numbers within the pages of the Highline Hi-Lites. If you find your account number, call the office at (507) 288-4004 by the 5th of the month after receiving your newsletter and you will receive a \$30 credit on your electric bill.

We had no winners from the July issue. Be sure to check for your account number now!

ENGEL Painting- Residential & commercial, interior/exterior. Painting, staining, faux finish, powerwash decks. Insured since 1958. 258-1962.

DOUG & Linda's DJ/Karaoke- Weddings, graduations, indoor/outdoor parties. Great prices. 281-3580 leave message.

GUTTER cleaning, hedge trimming, sidewalk edging. Dave 292-0063.

THEEL Sandblasting-Painting, body shop repair, steel/alum welding. 282-2887.

MOWING, fertilizing, weed control, core aeration, seeding, shrub pruning. Professional service. Minnesota Outdoor Maintenance 208-2778.

MAX Ferguson Building, remodeling, additions, kitchens, finish lower level decks. Licensed/insured. Quality work. 867-1690.

SEPTIC tank pumping, design, installation, backhoe. Bruce Bucknell Construction 533-8830.

STUMP Grinding Plus- Have you even been stumped? ANDSTAR has an answer. Free estimates. 259-6214.

CARPET cleaning, 3 room special, \$99.99. Call America's Best to schedule an appointment. 280-8171.

MASTER Builders- Specializing in major remodeling, additions, kitchens. High quality, exceptional service. 280-8856/www.masterbuilders.com.

THE Hangman- Sales of custom blinds & drapes. Cleaning, repair & design available. Free estimates. 867-4022.

CRESCENT Covers in Rochester. Uncover toppers/lids, new & used. Installation, parts, accessories. Dave 536-9057.

UPPERCASE Living- Decorative lettering and embellishments for your home, business or as a special gift. 259-2815.

GLO Commerical & residential cleaning. Low rates, flexible times, experienced, insured. 251-4708.

DIRT and Snow. MMI trained mechanic will fix motorcycles, 4-wheelers, snowmobiles. Best rates around. 365-8058.

SCHOTT'S Hardwood Floors- Repairs, refinishing, new installation, solid wood, all species. Free estimates. 867-0081.

AUCTION/WINE Taster Fundraiser for literacy program by RREC at Rochester Athletic Club, Oct. 10, 6-9 pm. 288-8726/www.rrec.info.

CRIS Peterson- Seal coating, patching, crack filling, bobcat work. Cheap prices. Semi-retired. 288-7424.

TLOUGAN Enterprises, LLC. Framing, siding, roofing, remodeling. We do it all. Nathan 259-8997.

SCHOENMANN Boat Works- Fiberglass/alum repair, floor/carpet/transom replacement, prop/skeg repair, parts. 281-0110.

JAY-BEE'S Tile & Stone- Installation, restoration, caulking, regrouting. Fix that old shower before it's too late. 273-0118.

NEON signs, beer signs, open signs. Repair, custom designs. Buy, sell, or trade. 282-0055.

DECKS, additions, finished basements, remodeling & general contracting. Licensed and insured. Cory 358-7084.

DON'T wait until it's too late to get your wood, pellet or corn burning appliance. Dano's 282-7223.

WILL quilt your quilt tops. Custom quilts, banners for church, weddings, birthdays, anniversaries. 287-6885/www.quiltsfromthehill.com.

TREE trimming/removal, oak firewood, mulch, skidloader work, hauling, snow plowing. Insured, free estimates. 259-4367.

ACCOUNTING Services- Small business, payroll, income taxes, Quick Books assistance. Personalized service. Loren 282-5600.

COMPLETE landscaping services within the Rochester area, over 10 years experience. 2-year guarantee, quality work. 261-9307.

MICK'S Backhoe & Blacktop Service- Specialize in residential driveways & all blacktop repairs. Dumptruck hauling & backhoe work. 282-4378.

CONTACT Kent at Advantage Climate Solutions for your central boiler & wood pellet needs. 259-8531.

ANIMALS

LOST! (2) NEUTERED cats. (1) orange, (1) cream. 4500 block of College View Road E. 282-5544 if found.

DOG Kennel, 6x6, heavy-duty; Fiberglass dog house for large dog, \$100 for both. 289-6934.

BABY Pygmy goats- (4) does, (1) Wither, (1) buck, \$600 or does \$150, males \$100; Banty laying hens, \$5. 775-6139.

MINI rex bunnies, \$5. Born May 21, grey, black or spotted. 775-2011.

GAMEFISH for your pond or lake. Private fish hatchery. 365-8081.

MUSCOVY ducklings, various ages, \$1.50-\$2 each. 753-4022.

YOUNG geese, \$6. 365-8989.

(12) EXCELLENT Dorper Xbred ewes. (1) reg Dorper ram. 932-5146 after 6 pm. 932-5146.

REG polled Hereford bulls; High quality yearlings & 2 yr olds. 282-8034.

16" SIMCO saddle w/green seat, great shape, thick old-time leather, better than new. Cheap, \$290. 545-2048.

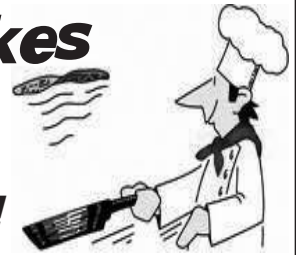
LOGAN Coach Stock Trailer, gooseneck, 4 horse/stock layout, 6x16, escape door, center slam gate, wood floors w/mats. 876-2550.

HORSE Boarding- Our 16th year. Indoor/outdoor arenas, trails, round pen, \$185 and up. 867-3661/www.RiverNorthStables.com.

HORSE Boarding- Indoor/outdoor arenas, tack room, box stalls, pastures, shelters, round pen. Nice facility. 273-9699.

Join us for **Member Appreciation Day**
Thursday,
September 17 • 3 - 7 p.m.

All the pancakes
you can Catch.
Bring the family,
Friends, Neighbors!



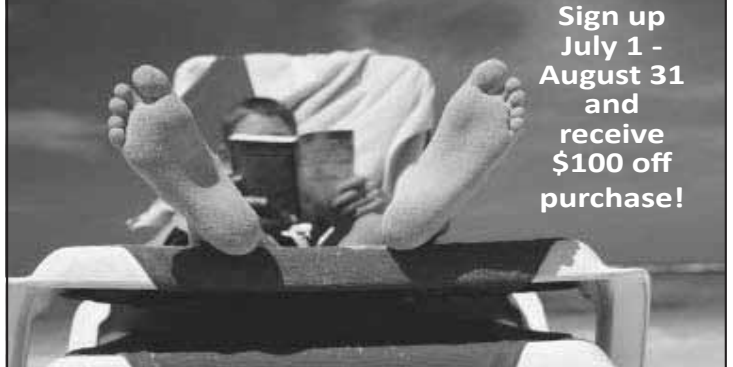
In observance of Labor Day,
People's Cooperative Services will
be closed Monday, September 7.
The office will reopen Tuesday,
September 8 at 7:30 a.m.



Have peace of mind while away on vacation

People's Cooperative Services (PCS) offers security systems to its members and residents of southeastern Minnesota through Heartland Security Services. If you think security systems are just to keep burglars out, think again. Security systems fit with special sensors can help detect smoke, water, and temperature changes within your home. As a People's Cooperative member you can receive a 10% discount on Heartland Security systems and monthly monitoring fee.

Sign up
July 1 -
August 31
and
receive
\$100 off
purchase!



1-888-264-6380
www.heartlandss.com

Heartland
Security

Holiday Lighting - Start Thinking Green!

Make The Switch To Energy Saving LED Lighting

It's not too early to start thinking of holiday lighting. Holiday lighting is a very significant electric load for People's Cooperative Services and for our power supplier, Dairyland Power Cooperative.

Holiday lighting has grown to represent approximately 60 megawatts of additional load to the Dairyland System of cooperatives. This load is on top of the winter seasonal peaks adding to demand and peak energy purchases. This load is the equivalent of approximately 1-1/2 million 100 lamp strings of miniature lights.

We would like you to give serious consideration to switching as much of your holiday lighting from standard incandescent lamps to the new LED (light emitting diode) energy saving lamps.

People's Cooperative Services members are eligible to receive a \$2 rebate (credit on your electric bill) per string, with a limit of twelve strings per member, of LED holiday lights purchased between August 1, 2009 and November 30, 2009.



For a limited time
\$2 Rebate Per String of LED Holiday Lights
(12) String limit per member

Complete the incentive form, send the form in with copies of your sales receipt and the LED instructions from the package. All rebate forms must be postmarked by December 31, 2009.

LED holiday lights will also save you money. LED lights consume up to 90% less energy than conventional miniature incandescent lamps and last 25 times longer. They stay cool reducing risks of overheating. You may never have to replace your lights again.

A 100 string set of LED lights operating for 1,000 hours would cost a nickel (5¢) to operate. A similar 100 string set of incandescent miniature lamps would cost \$4.08 for the same 1,000 hours of operation.

Rebate forms are available on-line at www.peoplesrec.com and at the cooperative office.

Must be purchased between August 1 - November 30, 2009.



Understanding Dual Fuel

What does Dual Fuel mean?

Dual Fuel means using two fuels to heat the home instead of one. In most cases, this means combining a high efficiency electric heat pump with a fossil fuel furnace (natural gas or propane). A heat pump is a home comfort unit that will heat your home in the winter and cool it efficiently in the summer. During mild winter temperatures, that heat pump operates at an incredible 200 to 300 percent efficiency. During the coldest times, the fossil fuel furnace burns at its greatest efficiency.

So by using these two sources of heat, you can actually heat your home for less than if you use only one source of heat. An outdoor thermostat will enable whichever unit will most efficiently heat the home at any given outdoor temperature.

Who can benefit from choosing a Dual Fuel system?

There are several situations that lend themselves to the installation of a Dual Fuel system. You may want to consider Dual Fuel if you are:

- ✓ Building a new home
- ✓ Considering adding central air conditioning to an existing home
- ✓ Planning to replace window air conditioning units or a worn out central air system
- ✓ Wanting to extend the life of your fossil fuel furnace

\$120 per ton air heat pump rebate
\$200 per ton geothermal rebate

Contact HVAC contractors of your choice to receive their bids. To be sure the system you choose meets the co-op's rebate requirements, either you or your contractor should contact People's Cooperative Services. Your HVAC contractor will install the system and is responsible for its proper operation.

New for 2009, federal tax credits are available for 30 percent of the cost of updating to an energy-efficient air conditioner (up to \$1,500).

People's Cooperative Services requires a Dual Fuel agreement form to be signed and on file in the office before a meter will be set for dual fuel. PCS also requires a copy of your electrician's electrical certificate. All incentives are issued as a credit on your electric bill. Dual fuel and incentive forms can be found on the PCS website at www.peoplesrec.com or by stopping by the office.

DUAL FUEL