

Inside this issue ...

CEO Message	2
Energy Tip.....	3
Fire Prevention	4
Hunter Safety	5
Load Management	6
New Employees.....	7
Capital Credits.....	9

Celebrating **75**
1936-2011 *Years*

HIGHLIGHT

PEOPLE'S COOPERATIVE SERVICES

Hi-Lites

October is Cooperative Month...Let's Celebrate!

This is your month to celebrate, Cooperative members! October is Cooperative Month and in observing it, you will join over 900 electrical cooperatives across the nation in the celebration. The goal is to educate members and to celebrate services, advances and contributions to the world of member-owned businesses.

Like credit unions, farm, food and transportation cooperatives, electrical cooperatives are owned by local consumers who buy electricity from the shareholders, rather than from a non-local business. Being member-owned means that the control of the cooperative is in the hands of the people who live and work in the communities they serve.

Of course, being an owner doesn't mean you can drive to a substation and take home a transformer or borrow a spool of wire. Those assets are owned collectively by everyone who has signed up for electric service. A portion of the electric bill you pay each month goes into building distribution infrastructure—poles, wires, and substations—that bring you a steady supply of power.

It is estimated that 130 million people use cooperative provided power. That's a large number to serve and an even bigger job to do it well. And indeed, People's Cooperative Services has done it well.

The 75-year history of People's Cooperative Services is a successful story of providing safe and reliable electric service to the rural area. Proving to be a better business model, the cooperative lives the values they stand for every day. People's Cooperative Services' past is filled with examples of integrity and honesty, while serving their members.

Being a not-for-profit, any funds left over after bills have been paid, infrastructure built, and an emergency fund established,

goes into a fund. Then, when your board of directors determines the cooperative is in good financial shape, this capital is returned to you; in the form of capital credits. How much money you get back depends on how much electricity you used.

The goal is to provide you with electricity at a price that is as close to cost as possible. That way, more of your money stays in your pocket.

In short, you are receiving a vital resource, electricity, from a business owned and operated by you, your friends, and neighbors. Working together, we provide you with the highest level of service we can while striving to keep your electric bills affordable.

Our values and principles are the very fabric that is woven across the fields, woods and streams of rural America. And that's the cooperative difference.

Debi Neville
Freelance Writer, Rochester

The Seven Cooperative Principles

All cooperatives adhere to these seven guiding principles:

1. Voluntary and Open Membership
2. Democratic Member Control
3. Members' Economic Participation
4. Autonomy and Independence
5. Education, Training, and Information
6. Cooperation Among Cooperatives
7. Concern for Community

COOPERATIVE ENTERPRISES
BUILD A BETTER WORLD.

learn how at go.coop

CO-OP MONTH / OCTOBER 2011

C.E.O. Message

One of the biggest challenges your cooperative faces is adjusting to the regulations set forth on electrical utilities by the EPA. Lately, we have been closely monitoring the Cross State Air Pollution Rule (CSAPR) as it works its way through legislation. Even though our power supplier, Dairyland Power Cooperative (DPC), has been taking many successful measures to control emissions, this rule will put vast pressure not only on DPC, but your cooperative as well.

Cross State Air Pollution Rule (CSAPR)

The EPA continues its series of regulations that affect electricity generation, with the Cross-State Air Pollution Rule (CSAPR) set to take effect January 1, 2012. Under the rule, which was finalized in July and revised in October, power plants in 27 states, including Minnesota and Wisconsin, will be required to limit sulfur dioxide and nitrogen oxides emissions that affect air quality in other states.

CSAPR replaces the Clean Air Interstate Rule (CAIR), issued in 2005. CAIR was vacated by the United States Court of Appeals for the District of Columbia Circuit in 2008. The court instructed EPA to make revisions to CAIR and, until the revisions were made, the CAIR rules would temporarily stay in place.

During this time, Dairyland Power Cooperative, has made major reductions in emissions of sulfur dioxide, nitrogen oxides and particulate matter by investing in new air emission control equipment. For example, Dairyland installed fabric filter "baghouses," designed to remove more than 99.5 percent of particulate matter from the exhaust gas stream, at Genoa Station #3 (G-3) and the John P. Madgett Station (JPM) in 2007. These baghouses remove 7,000 pounds per day more particulate matter compared to previous controls.

Dairyland is currently in the midst of a \$400 million air emission control plan at its electric generating facilities. When this plan is complete, Dairyland's sulfur dioxide emissions will be reduced by over 90 percent. This will be in addition to the 80 percent reduction of sulfur dioxide emissions by Dairyland since the early 1970s. Nitrogen oxides emissions will be reduced by over 50 percent across the Dairyland system.

Dairyland installed a semi-dry flue gas desulfurization system, or "scrubber," to remove sulfur dioxide at G-3 in early 2010, and a similar sulfur dioxide scrubber is planned for JPM. Dairyland has also installed equipment to reduce emissions of nitrogen oxides (NOx) at JPM, G-3 and its Alma units 4 and 5.

While I certainly embrace efforts to provide a cleaner environment, I am concerned about the overall trend of dramatically increased regulation by the EPA and believe it's important to make sure the rules proposed and enacted are reasonable measures that make sense for our members.

The new CSAPR is significantly more stringent than CAIR and allows very little time to comply. Beginning January 1, 2012, CSAPR establishes emissions limits for each state and each electric generating unit (called allowances). The number of allowances provided for Dairyland's power plants and most other affected utilities, is significantly less than needed to meet typical generation requirements.

I am very concerned that CSAPR will drive our energy costs up considerably. The air emission controls already installed at Dairyland's plants are not enough to meet these new allowance limits. The additional air emission controls planned by Dairyland cannot be installed before the CSAPR limits are in effect. While excess allowances may be traded under the rule; there is some concern that there will not be enough allowances available to cover all of the emissions from utilities in the state.

Since it is impossible for Dairyland to install additional planned air emission controls by the 2012 start of CSAPR and allowance trading is questionable, Dairyland and other utilities may be required to reduce generation to comply with CSAPR. If they curtail production at their facilities it may require the purchase of power from a higher priced marketplace, which will likely increase our costs.

The EPA claims that the Cross-State Air Pollution Rule will help avoid tens of thousands of premature deaths and illnesses, achieving billions of dollars in public health benefits. On a national level, EPA estimates the rule will cost \$800 million annually by 2014, on top of roughly \$1.6 billion per year in capital investments already underway as a result of the CAIR. The Brattle Group (Economic and Financial experts) estimates the rule could cost up to \$120 billion by 2015 and reduce the nation's power supply by more than 55 gigawatts (almost 4 percent).



Elaine J. Garry
President & CEO

507-288-4004
egarry@peoplesrec.com

continued on page 3. . .

continued. . . C.E.O. message

National Economic Research Associates (NERA) found that CSAPR, together with another proposed rule called Utility MACT, will result in net employment losses of over 1.4 million job-years by 2020. While EPA claims the regulations would create jobs, the NERA analysis projects that four jobs are lost for every job created.

People's Cooperative Services and Dairyland have made significant investments and efforts to comply with environmental regulations. But, as the CEO and President of this cooperative and a consumer of electricity, I have serious concerns about the cost to consumers that these recent regulations would impose.

Dairyland staff is working diligently with technical experts throughout the industry to find solutions that will minimize the impact on electricity prices for consumers. Dairyland is asking the EPA and a court to stay the rule, make modifications to the rule and provide reasonable time to comply.

People's Cooperative Services and Dairyland are committed to improving our environment. All we are asking for is sufficient time to make the required modifications at our power plants to meet the new rules, something which CSAPR does not provide us. We don't think that is fair. Join with me in urging Congress to enact realistic and economically suitable energy policies that will benefit all Americans.



Electric heat sales tax exemption

According to Minnesota law, electricity sold to residential users, where electricity is the main heat source (over 50 percent), is exempt from Minnesota sales tax during the heating season. If you have filed an exemption form with People's Cooperative Services (PCS) in the past, you do not need to file again. However, if your electric heat is used in conjunction with wood or another fossil fuel, please re-evaluate your heat status. Members who receive a tax exemption when electric heat is NOT the primary source of heating are in violation of the law. Please call PCS at (507) 288-4004 if you haven't been on tax exemption before and should be or if you need to be taken off tax exemption.

Slaying energy vampires

Did you know that you're sharing your home with "energy vampires"—electronic and electrical devices that continue to drain electricity even when turned off? On average, these items are responsible for an estimated 10 percent of the electricity you use every month.

Here's a tip from People's Cooperative Services that can help you drive a stake through the heart of these vampires, saving energy and money.

One way to identify energy vampires is to look for devices with remote controls—TVs, DVRs, and audio equipment, for example. Then target gaming consoles, computers, monitors, and printers as well as chargers for cell phones, iPods, small DVD players, and laptops. Chargers draw energy even when they're not charging anything.

An easy way to seal the coffin on energy vampires is to plug components of your computer or home entertainment system into a power strip. With a single flip of a switch, you can fully cut power to them.



In addition, don't forget to unplug any appliances—such as coffee makers and toaster ovens—with digital clocks when you aren't using them. As TogetherWeSave.com has shown, pulling plugs and employing power strips can save you \$222 in electric bills per year. Eighteen thousand six hundred and sixty three

For other tips on how to save energy—and money—visit www.energysavers.gov or Touchstone Energy® Cooperatives energy-saving website, www.TogetherWeSave.com.

SPOT YOUR NUMBER

Each month we hide five account numbers within the pages of the Highline Hi-Lites. If you find your account number, call the office at (507) 288-4004 by the last day of the current month and you will receive a \$30 credit on your electric bill.

Peter and Jessica Desens found their number in the September issue. Account numbers not found: Marlo Milene, Rebecca Teal, Timothy Wipf, and David Overend.



October is National Fire Prevention Month

Protect Your Family – Take steps to prevent electrical fires in the home

The United States Fire Administration reports there are an average of 28,300 residential electrical fires each year, causing 390 deaths, 1,000 injuries, and nearly \$1 billion in direct losses. The National Fire Protection Association notes that 41% of those fires were related to home wiring, cords or lighting.

Safe Electricity and People's Cooperative Services wants consumers to be aware that the majority of electrical fires are preventable and offers some simple things to check for around the home:

- Make sure light bulbs are correctly rated for the fixture in which they are being used. Do not use light bulbs with wattage that is too high for the fixture. For example, using a 100-watt bulb in a 60-watt fixture creates the danger of overheating and fire.
- Keep lamps, especially those with halogen light bulbs, away from flammable materials such as drapes, clothing or paper. Turn them off when you leave the home.
- Look for cracked or damaged cords and loose fitting plugs on extension cords as well as appliance cords. Replace or repair damaged cords and plugs.
- If an appliance has a three-prong plug, use it only in a three-slot outlet. Never remove the round grounding pin or force it to fit into a two-slot outlet or extension cord.
- Replace any appliance or tool if it causes even small electrical shocks, overheats, shorts out or gives off smoke or sparks.
- Switch plates and outlet covers that are discolored or warm to the touch indicate a problem that should be checked out. Immediately shut off light switches that are hot to the touch and have them professionally replaced. Have an electrician check the wiring in your home if you find, popping and sizzling sounds in walls, lights that dim when other appliances are turned on, or frequently tripped circuits.
- Use extension cords only temporarily, not as permanent wiring. Don't overload them.
- Do not place cords and wires in dangerous places such as under rugs, in high traffic areas where they can be trampled or in tight spaces where heat can build up.

- To prevent overheating, allow air space around heat-producing appliances such as TVs, plug-in radios, stereo sets, computers and high-wattage lamps.
- Do not exceed 1,500 watts of appliance load for each outlet or circuit.
- Know where your circuit breakers and fuse boxes are and how to operate them. Make sure the panel door is securely closed.
- When buying electrical appliances, look for products evaluated by a nationally recognized laboratory, such as Underwriters Laboratories (UL). When using appliances, follow the manufacturer's safety precautions.

Finally, protect your family by checking the operation of the smoke detectors and have an escape plan for everyone in your family. Check detectors every month and replace the batteries twice a year. The National Fire Prevention Agency reports that roughly 60 percent of reported home fire deaths happened in homes with no smoke alarms or alarms that weren't working. Also, develop and practice an escape plan twice a year in case of a fire. A good plan is known by all household members and includes an outside meeting location away from danger of the fire.

If you must attempt to put out an electrical fire, use a Class B/C or Class C rated dry fire extinguisher. Never try to extinguish an electrical fire with water!

Safe Electricity and People's Cooperative Services urges everyone to understand how electrical hazards can contribute to fires and to take steps to keep your home and loved ones safe from electrical fires. Learn more at SafeElectricity.org. Two thousand five hundred thirty two

Learn how to protect your home from fire!

The key to stopping a house fire is detecting it early. Where there is smoke, there is fire! Our smoke sensors will automatically notify the authorities if you aren't there. **Sign up for a new Heartland Security system by November 30 and receive a free smoke sensor.** Offer can't be combined with other specials. Call 1-888-264-6380 for more information or visit www.heartlandss.com

Fire Prevention Lesson #1
Where there is smoke, there is fire!

Heartland Security
1-888-264-6380

Graphic components courtesy of iStockphoto.com

Hunter Safety - Guns and power lines don't mix

As you take to the field this fall, People's Cooperative Services reminds hunters to think safety first. Make every trip successful by following these safety tips when hunting around power lines.

- Never shoot at electrical power lines or electric facilities such as substations or transformers. Not only is it extremely dangerous; it's against the law.
- If you see a power line on the ground, do not approach it! Touching an energized power line could be fatal. Notify the local utility of a downed line as soon as possible.
- Never point a firearm at anything you do not intend to shoot.
- Treat every firearm as if it is a loaded firearm.
- Always make 100% sure of your intended target before shooting.
- Make sure your firearm is unloaded when not in use and never leave it unattended.
- Keep your barrel and action clear of any obstructions.
- Never shoot at flat, hard surfaces or the surface of water.
- Never operate firearms under the influence of drugs or alcohol.
- Always carry a first aid kit.
- Have emergency phone numbers available in your cell phone.
- Always know where everyone in your hunting party is located.
- Do not hunt on prohibited land. Twenty one thousand two hundred and fifty



FALL BACK

Daylight savings time ends Sunday, November 6 at 2:00 a.m.

Be sure to set your clock back 1 hour.



DualFuel Testing

ATTENTION members, with winter fast approaching, it is time to check your automatic heating backup system. All residential interruptible heat (dual fuel) accounts will be controlled Wednesday, November 16, beginning at 5:00 p.m. All load will be restored by 10:30 p.m.

This test is conducted each fall to assist you in determining if problems exist with your interruptible heating loads and remind you that loads will be controlled during the peak of the heating season.

Please contact the cooperative office at (507) 288-4004 if you experience any problems during this test.



Load Management in a MISO world

New strategies benefit the cooperative membership

Dairyland Power Cooperative provides People's Cooperative Services with the energy required to meet the needs of your homes and businesses. Dairyland and PCS also collaborate on strategies to best increase efficiencies and decrease costs for the benefit of our members and the environment.

Traditionally, Dairyland's load management program functioned primarily to reduce energy consumption during periods of peak demand, mainly as a way to reliably meet member energy needs while curbing costs. In essence, that original goal still stands: Load management remains a tool used to balance the demand for electricity with the ability to generate or economically purchase electricity. Dairyland and its member cooperatives save money by deferring the need to construct additional power plants or purchase expensive power during periods of high demand.

Controlling for capacity and economics

The difference today is that Dairyland relies on load management resources for more than peak load reduction since joining the Midwest Independent Transmission System Operator (MISO) as a transmission-owning member in June 2010. Load management is now also used as an economic tool to reduce wholesale energy costs, to the benefit of cooperative members.

Prior to joining MISO, Dairyland produced power from its own generating facilities or purchased energy directly from a neighboring utility to provide the needed electricity for its member cooperative, such as People's Cooperative Services. By joining MISO, Dairyland's generation resources are now offered into the wholesale energy market and are therefore affected by the energy used and produced across the region. All generation is dispatched into the MISO market for regional requirements, and sold to MISO based on market prices. Similarly, all of Dairyland's load requirements are purchased from MISO at market prices.

Dairyland now needs to plan differently and make changes in both operating its power plants and marketing the energy. Simply put, Dairyland cannot just dispatch power from, for example, its facility in Genoa, Wis., anymore to fulfill direct needs.

Therefore, if the current or projected day-ahead market price to purchase energy is too high, Dairyland may now implement load control as a way to mitigate the need to buy high-priced power. A price threshold, on which to base the decision to implement load management or buy power in an inhospitable market, is set to ensure a reasonable number of control events each season.

Significant savings

Through its market-based economic dispatch and daily energy storage programs, Dairyland

estimates an average annual savings of over \$1.5 million in wholesale energy costs, plus the capacity benefit of these load management resources.

This thrifty course of management clearly pays off in real dollars for our membership. Broken down further, the savings for economically dispatched load control for summer 2011 alone (June, July, August) was approximately \$80,000.



How does the Load Management Program work?

Through People's Cooperative Services' wholesale power supplier, Dairyland Power Cooperative, we have long participated in energy and money saving programs called load management. The program traditionally offers benefits to cooperative members who agree to electric use control during times of peak demand or high energy prices, or during system problems such as a generator outage.

Dairyland estimates the load management program reduces its system peak by approximately 70 megawatts (MW) in the summer and 140 MW in the winter...the equivalent size of a small power plant. It has done so by reducing total demand during peak use hours—generally between 3 p.m. and 9 p.m.—when people are commonly at home running washers, dryers, dishwashers, air conditioners, heaters and so on.

For example, your air conditioning unit might be cycled on and off at 15 minute intervals for a few hours on a day load management was utilized, if you are a program participant. Home comfort is not diminished, but the energy and financial savings aggregated through participation across the Dairyland membership is significant.

Please welcome Mike Henke and Gwen Stevens to PCS!

Mike Henke recently joined the PCS staff as the new director of finance and accounting. Mike holds a degree in business administration and accounting from Minnesota State University, Mankato and received his masters of business administration from Metropolitan State University. Mike and his family reside in Lakeville.

Gwen Stevens joins PCS as the new part-time administrative assistant. Gwen is a marketing graduate from Concordia University and also has an executive assistant/legal specialist diploma from Rochester Community and Technical College. Gwen and her family reside in Rochester. Nine hundred sixty five



Mike Henke, Director of Finance and Accounting



Gwen Stevens, Administrative Assistant

Congratulations 4-H and FFA Youth

4-H and FFA have been instrumental programs helping youth develop leadership and life skills. People's Cooperative Services congratulates all 4-H and FFA youth for their hard work and dedication to their year-long projects and livestock displays. People's Cooperative Services continues to support the livestock blue ribbon auctions in Dodge, Olmsted, Goodhue, Wabasha and Winona counties.



Jeff Borst, Olmsted County Fair

Go GREEN this holiday season with

LED HOLIDAY LIGHTS

This season, decorate with LED holiday lights, which consume 90 percent less energy than traditional miniature lights and operate 30 times longer.

People's Cooperative Services members are eligible to receive a \$2 rebate (credit on your electric bill) per string; with a limit of twelve strings per member (strings must have at least 25 lights). Rebates are in place through December 31, 2011 or until funds by incentive or in total, are depleted. Four hundred



Rebate forms can be found at www.peoplesrec.com under the member services tab or by contacting the Cooperative office at (507) 288-4004.



Energy Efficiency

Tip of the Month

When buying a new appliance, check the black and yellow EnergyGuide label. This label provides an estimate of the product's energy consumption and efficiency. It also shows the highest and lowest energy efficiency estimates of similar models. Most major appliances—such as refrigerators, dishwashers, and clothes dryers—are required to have these labels.

Source: U.S. Department of Energy

New Headquarters Update

Great weather has led to great progress on the new headquarters building. The exterior walls, roofing, and masonry work have been completed. The concrete floors in the warehouse, service bays, and wash bay areas are finished and the concrete floor in the main office will be done soon.

Framing for the windows and doors has begun. When the framing is complete the installation of external doors and windows will start. Inside wall framing within the office building is being erected and the electrical and plumbing continues to be roughed in.

General site grading continues along the east side of the building. Driveways, parking areas, and the pole yard are being set to final grade.



People's Cooperative Services new headquarters building under construction.

Trenching work to install the manifolds which connect the geo-thermal loops has been completed and the trenched area is being filled back in for final grading. Work to install the utility services to the new building and Oronoco Crossings will be completed in the coming weeks.

Watch the progress at www.peoplesrec.com



People's Cooperative Services existing headquarters and adjacent land on Highway 14 East, Rochester is listed **"For Sale"**

Contact Hamilton Real Estate, Inc.
Mac Hamilton (507) 281-1002



The Cooperative is also promoting the development of Oronoco Crossings - a 36 acre Commercial/Industrial development adjacent to the new headquarters location in Oronoco.

Rebate deadline approaches

People's Cooperative Services (PCS) has a variety of rebates available to members that purchase energy efficient appliances and products. However, those rebates are only available until December 31, 2011, or until funds have been depleted, whichever comes first.

Rebates are available for ENERGY STAR appliances, water heaters, heat pumps, and central air conditioners. PCS also offers rebates for recycling old appliances such as a freezer, refrigerator, or air conditioner. Various lighting rebates are also available.

Rebate forms are available online at www.peoplesrec.com under the member services tab. Please be sure to review the rebate form prior to making your purchase to ensure your item meets the efficiency requirements to receive the rebate.

Safe Harvest

Use care when raising augers or the bed of a grain truck. When moving large equipment near a power line, always use a spotter, or someone to help make certain that contact is not made with a line.

The Cooperative Difference - Returning profits back to our members

One of the advantages of being a member-owner of an electric cooperative is sharing in its success. People's Cooperative Services is proud to provide its member-owners with fair and reasonable electric rates to power their homes and businesses. Certainly, this is a measure of success. Your cooperative is equally proud to have returned \$7 million in capital credits over the years, another measure of success.

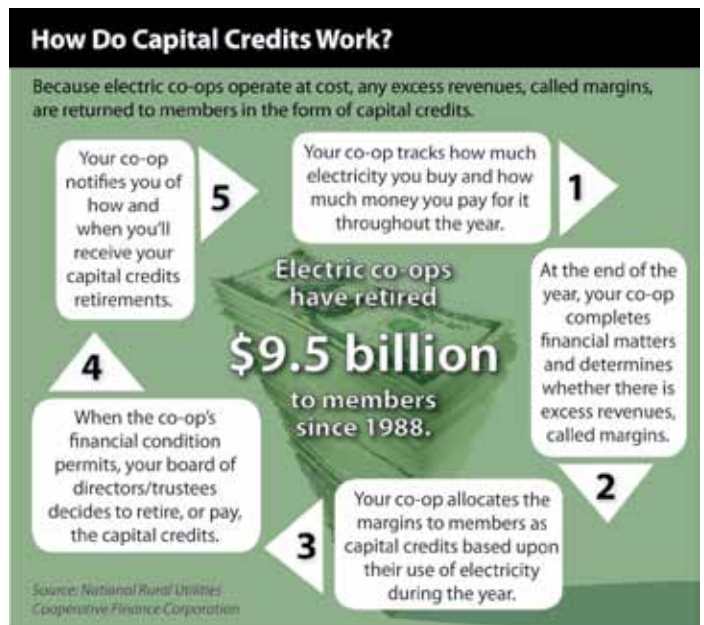
People's Cooperative Services is a non-profit organization; any profits or margins from previous fiscal years are allocated through capital credits to members based on their portion of electricity purchased. Capital Credits, sometimes referred to as patronage dividends or member equity, represent your share of the ownership in the cooperative and are part your capital investment in the cooperative.

This month, People's Cooperative Services (PCS) will retire a total of \$671,159 in capital credits. This amount is based on the following:

- PCS retired \$504,704 and Dairyland Power Cooperative, our power supplier, retired \$166,455.
- PCS retired four percent of its capital credits; 50% of which were based on retiring the oldest capital credits; the remaining 50% were retired on a percentage of the remaining years.

- PCS retires the DPC portion of capital credits to our members as DPC retires the dollars to us.

With the membership receiving electricity at the cost of service, receiving equal ownership, and having direct input into the decision making process of the company—cooperatives are the most democratic form of free enterprise in the country.



Postal Statement of Ownership - PS Form 3526

1. Publication Title		2. Publication Number		3. Filing Date	
Highline Hi-Lites		244720		September 30, 2011	
4. Issue Frequency		5. Number of Issues Published Annually		6. Annual Subscription Price	
Monthly		12		None	
7. Complete Mailing Address of Known Office of Publication (Not printer) (Street, city, county, state, and ZIP+4®)				Contact Person	
3935 Highway 14 E, PO Box 339 Rochester MN, 55903				Teresa Whitcome	
8. Complete Mailing Address of Headquarters or General Business Office of Publisher (Not printer)				Telephone (include area code)	
3935 Highway 14 E, PO Box 339 Rochester, MN 55903				507-288-4004	
9. Full Names and Complete Mailing Addresses of Publisher, Editor, and Managing Editor (Do not leave blank)					
Publisher (Name and complete mailing address)					
People's Cooperative Services					
3935 Highway 14 E, PO Box 339 Rochester, MN 55903					
Editor (Name and complete mailing address)					
Teresa Whitcome					
3935 Highway 14 E, PO Box 339 Rochester, MN 55903					
Managing Editor (Name and complete mailing address)					
Elaine J. Garry					
3935 Highway 14 E, PO Box 339 Rochester, MN 55903					
10. Owner (Do not leave blank. If the publication is owned by a corporation, give the name and address of the corporation immediately followed by the names and addresses of all stockholders owning or holding 1 percent or more of the total amount of stock. If not owned by a corporation, give the names and addresses of the individual owners. If owned by a partnership or other unincorporated firm, give its name and address as well as those of each individual owner. If the publication is published by a nonprofit organization, give its name and address.)					
Full Name		Complete Mailing Address			
People's Cooperative Services		3935 Highway 14 E, PO Box 339 Rochester, MN 55903			
11. Known Bondholders, Mortgagees, and Other Security Holders Owning or Holding 1 Percent or More of Total Amount of Bonds, Mortgages, or Other Securities. If none, check box <input checked="" type="checkbox"/> None					
Full Name		Complete Mailing Address			
Rural Electric Administration		Washington DC			
12. Tax Status (For completion by nonprofit organizations authorized to mail at nonprofit rates) (Check one)					
<input checked="" type="checkbox"/> Has Not Changed During Preceding 12 Months					
<input type="checkbox"/> Has Changed During Preceding 12 Months (Publisher must submit explanation of change with this statement)					

13. Publication Title		14. Issue Date for Circulation Data Below	
Highline Hi-Lites		October 2011	
15. Extent and Nature of Circulation		Average No. Copies Each Issue During Preceding 12 Months	No. Copies of Single Issue Published Nearest to Filing Date
Informative newsletter			
a. Total Number of Copies (Net press run)		11,650	11,650
b. Paid Circulation (By Mail and Outside the Mail)			
(1) Mailed Outside-County Paid Subscriptions Stated on PS Form 3541 (Include paid distribution above nominal rate, advertiser's proof copies, and exchange copies)		11,070	11,070
(2) Mailed In-County Paid Subscriptions Stated on PS Form 3541 (Include paid distribution above nominal rate, advertiser's proof copies, and exchange copies)		None	None
(3) Paid Distribution Outside the Mails Including Sales Through Dealers and Carriers, Street Vendors, Counter Sales, and Other Paid Distribution Outside USPS®		None	None
(4) Paid Distribution by Other Classes of Mail Through the USPS (e.g. First-Class Mail®)		None	None
c. Total Paid Distribution (Sum of 15b(1), (2), (3), and (4))		11,070	11,070
d. Free or Nominal Rate Distribution (By Mail and Outside the Mail)			
(1) Free or Nominal Rate Outside-County Copies Included on PS Form 3541		480	480
(2) Free or Nominal Rate In-County Copies Included on PS Form 3541		None	None
(3) Free or Nominal Rate Copies Mailed at Other Classes Through the USPS (e.g. First-Class Mail)		None	None
(4) Free or Nominal Rate Distribution Outside the Mail (Carriers or other means)		None	None
e. Total Free or Nominal Rate Distribution (Sum of 15d(1), (2), (3) and (4))		480	480
f. Total Distribution (Sum of 15c and 15e)		11,550	11,550
g. Copies not Distributed (See Instructions to Publishers #4 (page #3))		100	100
h. Total (Sum of 15f and g)		11,650	11,650
i. Percent Paid (15c divided by 15f times 100)		96%	96%
16. Publication of Statement of Ownership			
<input checked="" type="checkbox"/> If the publication is a general publication, publication of this statement is required. Will be printed in the October 2011 issue of this publication.			
<input type="checkbox"/> Publication not required.			
17. Signature and Title of Editor, Publisher, Business Manager, or Owner			Date
Teresa Whitcome Director of Member and Employee Relations			9-30-11

NEW!

Want Ad Guidelines

People's Cooperative Services publishes free ads as a service to our members within the following guidelines:

- Only PCS members or employees may submit ads.
- Member name, account number and phone number are required for all ads.
- Only one ad per member per month. Duplicate ads will not be published.
- Ads must be 120 characters or less.
- Ads will be printed for one month only.
- No ads or ad changes will be taken over the phone.
- PCS reserves the right to edit or reject ads.
- Ads are printed in the monthly edition of the Highline Hi-Lites.

Submitting Want Ads:

- Our preferred method for submitting ads is to use the online submission form available on our website at www.peoplesrec.com. Ads that are submitted online will be approved and posted for online viewing within one week of submitting. These ads will also appear in the next monthly edition of the Highline Hi-Lites provided they have been submitted prior to the last day of the month prior to publication.
- Ads that are submitted by mail or in paper format are **due by the 20th of the month prior to publication.**

Submit your ads and view them online at www.peoplesrec.com

ANIMALS & PETS

IRIE Kennels- Come to a quiet COUNTRY dog boarding facility w/ daily-weekly boarding rates available. Come Check Us Out! 507-289-2480 (8) Super cute kittens to give away to good homes. 507-951-3270

Horse Boarding- \$185 and up. Our 18th year. www.rivernorthstables.com. 507-867-3661

Horse hay \$3.00 Delivery available Call 507-365-8082

French Brittany (Epagneul Breton) Excellent Hunter. Trained, neutered, shots, 2 years old. Great temperament. \$325 obo 507-365-8939

Breed your own fair pigs. Purebred Poland China Boars for sale. Aggressive breeders Schley's Polands Dodge Center, MN 507-259-1145

Mini donkey - Black, 5 month jack, very cute and friendly \$300.00: also 2 grey/white kittens free. 507-533-8656

Found dog near Sargeant. All white, long hair. Husky mix? Very friendly. Brown eyes. See picture on Craigslist.org. 507-365-8076

Lost dog "Honey" by Oslo. Border collie mix. Long golden and white hair. Very friendly. Picture on Craigslist.org. 507-365-8076

Horse Boarding 6 miles E of Rochester. All amenities and trails. \$225 per month. 507-421-2792

Remington Dog Kennel Ex Large, used once \$50.00 or best offer. 507-365-8936

125 Gallon black fiberglass fish aquarium with stand for sale, \$499 507-281-5144

Byron Country Kennels - Dog boarding, baths, pet sitting and training. www.byroncountrykennels.com or call 507-254-0971

free donkey, round bales of hay 3 years old \$15 each, metal dog kennel with gate \$100/uhaul 597-867-3267

FARM EQUIPMENT

Tractor blade: 3 point hitch \$150.00 507-356-8546

Straw round bales. 507-289-0505

John Deere 40 manure spreader, works good. 507-282-2247

H & S 16-foot steel chopper box, tandem running gear. Good condition. \$1600 OBO. 507-285-5296

Barn to be torn down for the barn boards and wood. Taking bids, and best offer will get it. Call evenings: 651-345-0116

Used 40ft hydraulic driven manure auger. 16" diameter. 507-251-8111

3 Row New Idea Super Picker \$900.00 507-254-0773

Haban snowblower, 72 in., 3-pt., 2 stage attachment; Farmall B tractor w/60 in. Woods belly mower; Woods XT 172 brush hog. 507-533-6711

farm Gate 14' galvanized farm gate \$50 507-282-5656

3 PT 6' Heavy Duty blade \$375; horse hay \$3.00 delivery available. 507-754-5437

Wagon Tires, (4) 385-65 R 22-5, (2) 13 R 22-5, (1) 13 R 20. 507-932-4291

7' by 24' Notch Feeder Wagon, New Steel Bottom. \$2000 (Solid) 651-565-4245

I-H Super M with mounted 319 New Idea picker. Good condition, ready to pick. 507-867-4159

Hay Lg. Rounds \$45 Small rounds \$20 In shed. 507-288-7434

Big square bales alfalfa grass mix. 507-273-7310

16' Notch feeder wagon \$2000 510 New Holland manure spreader 163 bushel \$1400 ckamunrud@gmail.com for pics 507-951-0681

Grass hay Rd bales, stored inside; 3200 bu. Butler grain bin; JD Sabre lawn tractor, 21hp, 48in. deck, \$1000. 507-208-0032

Allis Chalmers WD tractor, runs very good, 12 volt system, tires fair to good. \$1,250 507-288-0671

2011 Large Round Bales. Grass some alfalfa. No rain but stored outside. Best offer. 507-867-4548

FOR RENT

Indoor storage for boats & RVs. \$40/mo up to 20ft, \$2/ft/mo over 20 ft. Cheapest around, south of Pine Island. 507-273-7953

WINTER STORAGE: For cars and etc, only have two spots left. Cement floors, Secure, Plug in, Rochester. 507-287-0490

Indoor storage space available for campers, boats and cars. 507-775-2771

Eastside Storage- New Buildings, Fenced, Well lit, Paved- inside and outside storage. 6584 Hwy 14 East 507-288-4793

Indoor storage- boats, cars, cycles, campers. Cement floor, clean, neat, Chester. Reasonable Rates 507-281-3486

For Rent - One 3,200 and two 10,000 bushel bins. Southwest of Kasson. 507-634-3409

One bedroom home in SE Rochester. Off street parking. No pets. Nice for young couple starting out. \$575./month 507-533-6061

GIVE AWAY

Acorns! Lots of acorns. You come pick them. call evenings 507-367-4455

Farm Cats, every size, every color. Call anytime 507-545-2350

Friendly farm kittens and cats. 507-867-3444

1100 Bu. Wire corn crib. 507-876-2311

Free to good home--1 year old male rat terrier-boston terrier mix--great family pet. 507-993-0167

Free cute, friendly, healthy kittens. Free chicks. 507-533-6910

HOMES

New 1672sq.ft.w/o rambler 2acre wded. lot, 34x26 garage, custom cabinets w/granite tops, mn.fl, 3 bedrms & laundry, 3mi., Roc. 507-289-3215

FSBO. SW Byron 1993 walkout colonial on 5 secluded wooded acres. Multiple buildings, heated shop, and amnities galore! 507-254-1069

85 ACRES prime hunting land. Could be platted for housing lots/development. Lots of trees. Rolling hills. \$850,000/OBO 507-876-2208

Looking to buy or sell a home, call Bob Matthews, agent with Coldwell Banker Burnet, Rochester, MN 507-251-4422

4 bd home to be moved. Lg kit, din rm & liv rm. Vinyl siding. Buyer must pay to remove from property. 507-754-5665

Buying/Selling Real Estate? Call an Expert! Amy Lantz, Realty Executives Top Results! 20+ years experience in all areas! 507-254-8844

Very nice 2 bdr/2bath Townhouse. Master bath. Stainless appliances. NW Roch - Brian Breider (agent at Keller Williams) 507-269-6890

HOUSEHOLD

Sectional couch for sale; 2 yrs old; purchaed from HOM Furniture; excellent condition; moving! \$450 b/o; 507-281-4296

Kenmore, large, washer & dryer; Bosche washer & dryer, front-load, apartment size, \$150 each. 507-269-3000

Bunk beds: Twin over twin, one pine set and one oak set. No mattresses or ladder. \$50 each set 507-545-1285

BEAUTIFUL PECAN DINNING TABLE WITH TWO LEAVES AND PAD EXCELLENT SHAPE 350.00 507-282-4538

Chrome Craft kitchen set 66" with leaf (17 1/2") 6 upholstery roller chairs great condition \$100.00 507-365-8669

8-place setting Max Schonfeld (El Verde pattern) oven-proof dinnerware, many extra pieces. Green spiral design. 507-477-2156

Arcade games, air hockey, pinball machines, slot machines, video poker machine, street hockey equipment, tanning canopy. 507-951-4174

Apples- Honey Gold, Regent, Haralson, 4001 Marion Rd SE 507-285-0270

Eden Pure Gen 3 Electric heater \$200.00 507-365-8401

Oak corner TV cabinet, \$30.00. Two blue snowsuits, 6-9 mos and 24 mos. 507-356-8061

For sale: Round oak dining table with one leave, 4 amish made oak chairs. 507-635-5685

Solid oak oval pedestal 48" dining room table with 6 chairs. 2 1/2" leaves. medium stain. excellent condition. \$500 507-876-2784

SALE: Antique Bentwood and Lincoln rockers, excellent, 5 sets of Deck the Halls dishes, Lit' Tikes kitchen with more 507-876-2165

Hearthstone brand 26000 BTU Tuscon model gas fired direct vent room heater. Lake Zumbro area. \$600.00 815-861-0023

Holidays coming: lazy susan, ice bucket, roastpan, hammered alum tray, cheese serving tray, tupperware, marble roll pin. 507-775-2413

Free range, farm raised all natural chickens. Federally inspected. 3-7 lbs. call 507-534-2582

20.29 cu. ft. Treasure chest freezer. Good working condition. \$50.00 OBO 507-876-2665

Quality Woods solid light oak computer desk, like new w/shelves & drawers. \$250 OBO. 507-288-8763

MISCELLANEOUS

TRAILER: Brand new, 6'X10' enclosed concession style with flip-up side door. Farmer's Market-Ready! \$3800/obo. 507-867-0057

10' Steel insulated garage door w/ chain drive open, \$145. 507-367-2205

Chickering Counsel piano, just needs tuning, good condition. 507-534-3530
JUNK-B-GONE Your junk removal experts. Single item or multiple truckloads. You call we haul. Call Don at 507-280-0404

Doll clothes to fit American Girl or 18 in. dolls. Dresses, hats, nightdresses and wedding dresses. 507-367-2494
Holiday Boutique, Saturday, November 19th, 9-3, Christ Lutheran Church, 2904 20th ST SE, Rochester 507-289-0271

Family Tree Landscape Nursery Call now for your fall trimming & Landscape-Great time to plant trees 507-289-0557

HAUNTED HOUSE - Located at the History Center of Olmsted County Oct 20-22 & 27-31 7pm-11pm more info at rochesterhorror.com 507-491-2639
Myers 1/2 hp Jet Pump with attachments, great for cabin well, \$50, excellent condition 507-367-4998

LOURDES FALL RUMMAGE AND BAKE SALE Saturday, Oct 15, 2011; 8am-1pm Drop off items at Lourdes 10/14/11 Noon-6pm 507-282-4882

Wedding dress, size 6, long sleeved, high neck, white, with vale. Can be altered 507-533-9397

Get zen Trumpet, Jupiter Flute, Trombone. Marching band drill shoes. ladies 7 1/2 and Mens 13. Tap shoes 8 1/2 new cond. 507-867-3068

For Sale: Hot Tub (caldera) works great. \$2000.00 507-288-1321

RECREATIONAL

Arctic Cat snowmobiles-97 ZL440 5100 mi \$900, 98 ZL500 3700 mi \$1200 also 2 axle 8'x16' trailer \$1200-All for \$3100 507-356-8712

Steel 6-gallon outdoor motor gas tank, \$10. 507-753-2900

89' 25hp Johnson tiller, \$650/obo; 16' Duck blind, \$50/obo; Duck decoys, \$50; (4) Ceiling fans, \$125. 507-251-2865

2002 Yamaha Viper(red) 3550 miles with reverse and electric start. 2003 Yamaha Viper(blue) 4418 miles. Asking \$2700 each 507-367-2690

2006 3 horse trailer DD with living quarters, like new, excellent condition, heat, ac, bed, shower, frig, gooseneck, 16000. BO 507-767-3171

1996 SportsMaster by Kit travel trailer; 27 ft; sleeps 6-8; couches, beds, etc in nice condition; \$5500; call before 9pm 507-876-9968

1973 John Deere Snowmobile, 1990 Arctic Cat 440 Jag Snowmobile. Storage for boats, Rv's, and cars. 507-288-5302

15' Boat and Trailer, motor depth finder. Redbone puppies 4 months old. Best offer. 507-534-2572

1993 1706 Spectrum fish/ski boat. 75 HP Mercury Motor, stored inside, many extras. 507-259-9287

'91 Caravelle Runabout, 17.5 ft, 135 HP. \$4,500 Email kpaff50@yahoo.com for pics or call 507-421-5017

SERVICES

Firewood dry oak \$60.00 a face cord. U-haul. Delivery available. 507-251-7455

Woodshed Recording Studio 24 track digital recording at an affordable price. Remote recording & duplication available. 507-288-8361

Handyman Services: Storm Doors, Interior Doors, Carpentry, kitchen remodel, misc household repairs. 507-206-6087

Campion Antenna Service, Antenna installation, HDTV, free estimates, 25+ yrs experience. Call Dan 507-254-0724

All local hardwoods & carving lumber. Milled & dried on site. 507-367-4402

Ronningen Roofing, siding, seamless gutters, windows. Professional installs and excellent clean up. Free estimates 507-281-8899

CLARK'S SEAMLESS GUTTERS - Wet basements, buckling cement, landscape damage protection. Free estimates. 507-281-2770

Crescent Covers in Rochester - Unicover toppers/lids. New/used. Installation, Parts, Accessories. Call Dave 507-536-9057

Tree Moving- Large & small. FOR SALE: Gold maples, technys, birch & larch trees. 507-876-2866

Alterations - specializing in bridal/formal. 25 years experience. Located near Douglas. 507-286-9277

Lawnmower repair and used lawnmowers and snow blowers for sale. Will buy lawnmowers and snow blowers. 507-533-4359

Hackman Contracting Call for all of your building needs! Lic#20639863/ Insured 507843-2400

I have 1 opening for a full time family to clean/laundry for. Call now for free estimate. Weekly/Biweekly Liz 507-696-7660

Cleaning wedding dresses for 15 years, can save you money. Call Betty 507-254-3917

Dan Johnson Meter Max Service - Sales and service of all Precision Planting products. 507-273-1507

Tree Moving: Up to 4 inch diameter. Insured. Free Est. 507-289-7348

I do custom line wrapping to wrap wet hay for baleage or dry hay to keep dry round bales or large square. 507-421-6193

Neil's Country Shop, fixing cars, truck, tractors, lawn equipment. Some sandblasting, painting. 507-421-6193

JIM'S FENCING, agricultural and split rail, free estimates. 507-421-2380

Master Builders specializing in major remodeling, additions, kitchens, high quality service. www.masterbuildersmn.com 507-280-8856

Tree Moving: Same Day Shade can transplant any tree up to 30 ft tall. We have 50" & 90" spades. Please call: 507-754-5900

TREE STUMP GRINDING, free estimates, efficient, insured, visit web site www.andstar.net, call ANDSTAR LLC. 507-259-6214

Schott's Hardwood Floors, sanding, finishing, new installation of all types of hardwood floors. Free estimates 507-867-0081

Max Ferguson Building & Remodling. Specializing in additions, kitchens, decks, basements. Quality work. Licensed & Bonded 507-867-1690

Jim's Tree Service. Trimming, removals, stump grinding, and firewood. 507-356-8456

SHOP & YARD

Lathes for sale: South Bend model 9A with tooling & chucks \$1,200 South Bend 10K w tooling & cabinet \$2,000 Call John 507-288-3424

Oak fire wood \$140 a load-free delivery and stacking. Hostas \$5 for 6" Hosta, Cast iron tub \$100, Riding lawnmower \$350 507-273-7960

Cars, iron, copper, batteries, inner tubes, farm machinery, lawnmowers, alum cans for recycling, appliances. 507-251-5391

For sale 1/2 Hp. 4 wire Submersible motor with 120 ft. wire Used 2 years \$150 For sale 1961 int. Cub Cadet 507-867-4019

Craftsman 10" radial arm saw, \$125, steel utility cart, 10 cu ft., \$25, Sears treadmill, \$25/ obo, Honda mower, free. 507-289-5016

Five snowblowers, 18 in. to 28 in. \$100-\$300 O.B.O. And lawnmowers. 507-282-5921

Tait Submersible pump, 1/3 H.P. 1 1/2" discharge Hydrolux Utility pump 1/2 H.P. Both New. 507-289-6500

Wood burner with blower, \$30 507-356-8369

VEHICLES

GMC custom rubber floor mats, fit Envoy or Trailblazer, front, back, & rear cab. All for \$50. 507-285-9005

2002 Buick LeSabre Limited 88,000 miles clean and good shap, asking \$6000.00 OBO. Also IH "B" \$1500 507-226-3104

1997 Chevy 1/2 ton 4x4 w/plow, \$4500. 507-282-5903

2002 Sport Grand Caravan, 137K miles, ex. running condition, great for hauling kids/large items, \$4,650 OBO 507-272-4456

2002 Ford Windstar--101900 miles-one owner-four door-a/c front & back-new tires-very nice condition-asking \$4950, offer 507-767-3221

97 Jeep GC V6, New breaks, Rotors, Exhaust, 214K miles, No rust and great condition. \$3000 507-261-0060
For 5th Wheel. Heavy plate with ball to bolt to pick up box. 507-365-8225

WANTED

Loom for weaving. Age or condition does not matter. Phone 507-367-4348

Wanted: Flymo lawnmowers. Need not run. Call Ron 507-273-5233

For Recycling-Old cars, tractors, farm machinery/equipment, scrap iron. Fair prices. Free hauling 867-4441 507-867-4441

Organist. Grace Lutheran Church. Oronoco. Paid position. Must be member of WELS or ELS. Pastor Kempfert 507-367-4426

Someone to cut and share wood. You take half. 507-289-4296

STX38 John Deere Shift rear end, must be good. 507-259-2940

Snap coupler disc for Allis-Chalmers WD 507-254-0310

Baseball and Football Cards from 1960's -1970's, cash paid. 507-259-4375

Paying cash for junk vehicles starting at \$150 and up. 507-206-9179

**GOPHER STATE
ONE CALL
1-800-252-1166**



Ads submitted by mail or in paper format are due by the 20th of the month prior to publication.

Member Name: _____

Account Number: _____

Phone Number: _____

Ad: For Sale ____ For Rent ____ Misc. ____ Wanted ____ Give Away ____

Send to:

People's Cooperative Services
P.O. Box 339
Rochester, MN 55903


No phone calls.

Submit your ads and view them online at www.peoplesrec.com

Ads are limited to 120 characters.
PCS reserves the right to edit or reject ads.



People's Cooperative Services

Your Touchstone Energy® Cooperative 

3935 Highway 14 East, PO Box 339
Rochester, MN 55903-0339

Highline Hi-Lites (ISSN# 244-720)

Highline Hi-Lites is published monthly, except in March. Special Edition issued in March.

Periodical Postage Paid in Rochester, MN

Postmaster: Please send address changes to:
People's Cooperative Services, PO Box 339,
Rochester, MN 55903

Management Staff

Elaine J. Garry	President / CEO
Don Hillman	VP Planning & Support
Jeff Allen	Director of Operations
Gary Fitterer	Director of Engineering
Michelle Olson	Director of Member Services
Jeff Thompson	Director of Finance & Accounting
Teresa Whitcome	Director of Member & Employee Relations

General Information

Office Hours: 7:30 a.m. – 4:00 p.m.
Monday – Friday
(507) 288-4004

Phone: (507) 288-4004

Online: www.peoplesrec.com

Digging and Line Location:
1-800-252-1166
(Gopher State One Call)

Cold Weather Rule

Minnesota's "cold weather rule" regulates residential electric service disconnections between October 15 and April 15, if disconnection would affect the primary heat source. To be protected from winter disconnection you must meet specific conditions. If you are in arrears on your electric bill or have questions about avoiding disconnection, please contact our office at (507) 288-4004.

Winter rate begins November 1

Beginning November 1 the seasonal rate for residential accounts will decrease to 10.8 cents per kWh. Residential interruptible heating (dual fuel) rates also change to 5.35 cents per kWh. The winter rate runs from November to April.



SAVE SAVE SAVE

Ponderosa Campground or Mac's Park Place

Special Disconnect/Reconnect Rates

Members with seasonal sites at Ponderosa Campground or Mac's Park Place qualify for reduced disconnect/reconnect rates when electing to disconnect and reconnect their electrical service on these dates.

Ponderosa Campground

Disconnect: October 20, 2011 (call by October 18, 2011)
Reconnect: April 12, 2012 (call by April 11, 2012)

Mac's Park Place

Disconnect: November 7, 2011 (call by November 3, 2011)
Reconnect: April 12, 2012 (call by April 11, 2012)

By disconnecting and reconnecting on the scheduled dates, we can lower our costs and pass the savings on to you!

In order to qualify for the discounted rate of \$50 you must schedule to both disconnect and reconnect on the dates listed above. Disconnects and reconnects scheduled for any other date will be charged our normal rate of \$100.

For more information please call the Cooperative office at (507) 288-4004.