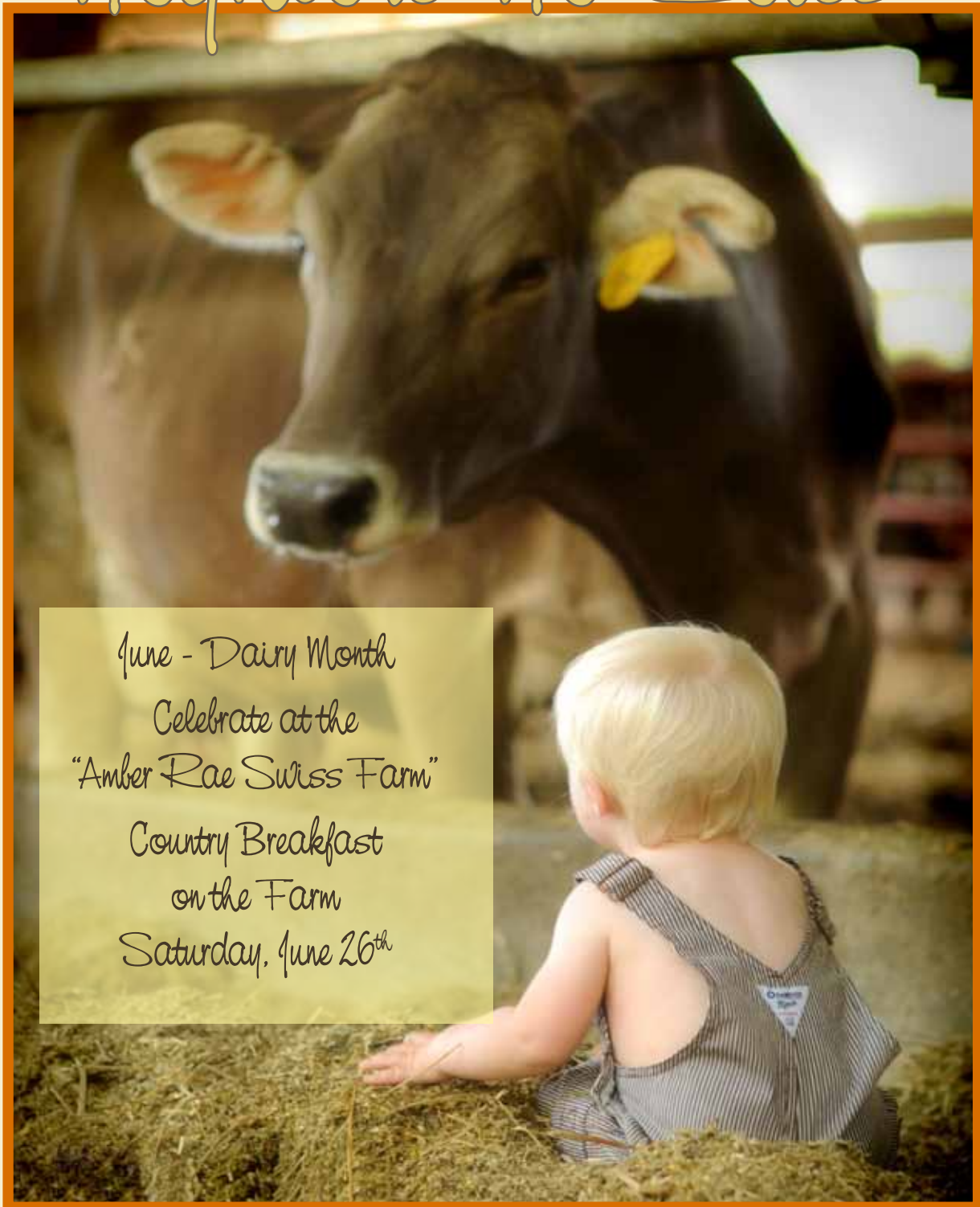



# Highline Hi-Lites



June - Dairy Month  
Celebrate at the  
"Amber Rae Swiss Farm"  
Country Breakfast  
on the Farm  
Saturday, June 26<sup>th</sup>



**People's Cooperative Services**

Your Touchstone Energy® Cooperative   
Member Owned - Service Driven

## Inside . . .

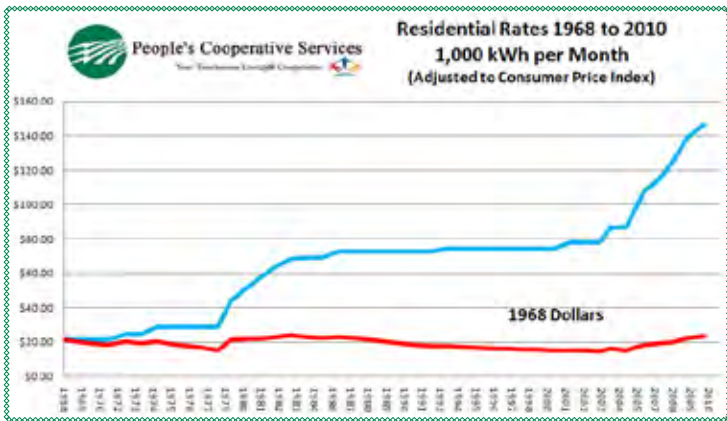
CEO Message .....	2
Update - New Headquarters Building .....	3
Heartland Security earns prestigious award .....	4
Brownfields to Brightfields - Solar Project .....	6
Days of Yesteryear .....	7
Operation Round Up® .....	9

# C. E. O. Message

## Penny Cheap!



Some of you may remember the advertising jingle that went “Electricity is penny cheap from NSP to You”. Penny cheap? What can you buy with a penny these days? Well, not much and with inflation that raises the price of all consumer products and services, you can’t buy a kilowatt hour anymore either. With the subject of inflation, I was interested in how People’s rates have done over the years. The following graph represents the cost for a typical month’s power bill of 1,000 kilowatt hours. The blue line shows this cost from 1968 rates to the present. The red line shows these same costs that have been adjusted to the Consumer Price Index to show where rates compare to the 1968 dollars.



Rate Comparison 1968 to Present

Following the Oil Embargo years of the mid-1970’s there was high inflation, in recent years environmental and fuel costs have been dramatic. Both these periods are evident on this chart as each of these circumstances have been driving forces in pushing rates up. When adjusted for inflation, rates in reality have been remarkably stable and moderate and in some cases have even been lower than inflation. One thousand kilowatt hours in 1968 cost \$21.45; this same 1,000 kWh today, adjusted for inflation, would cost \$23.51.

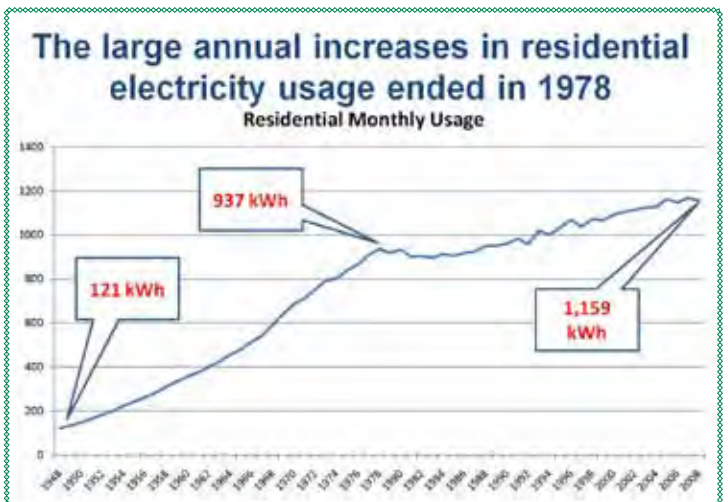
The price per kilowatt hour is not the only factor on your power bill that has changed. The amount of energy used in a typical residence has also changed dramatically. The early years of the rural electric program saw large gains in the average residential electricity usage as consumers added appliances and even air conditioning and electric heating to their homes. Prior to the electrification of Rural America the only electrical appliances on a farm were those that could be served by electrical light plants driven by the wind with Wincharger® plants or by gasoline with Delco® Light Plants. Generated electricity from these sources was stored in banks of glass, wet cell batteries that needed to be maintained.

In 1948 at the advent of the Rural Electric Administration, the average monthly residential electricity usage was 121 kilowatt hours. From 1948 to 1978, the average annual increase was over 7%. This rate of growth continued until 1978 when the average monthly usage was 937 kilowatt hours. Since 1978 the rate of growth has been under 1%. In 2008 the average monthly use was 1,159 kWh. Consumers are still adding electricity-using devices to their homes, but their impact is often offset by improvements in energy efficiency as older appliances wear out and are replaced with Energy Star® units and homes are weatherized to reduce heating and cooling costs.



Elaine J. Garry  
President / CEO

Reviewing People’s historical data I found that in 1967 the Cooperative had 7,000 members. The average monthly energy use was 866 kilowatt hours. The average bill was \$21. In 2010 we now have 15,000 members, the average monthly use is 1,300 kWh and the average bill is \$139. Applying the consumer price index for inflation once again, that \$21 in 1967 would be equal to \$137 today and that is for only 866 kWh. Today’s \$139 monthly bill buys 1,300 kWh!



Yes, electricity is still a very good value.

Article by: Elaine J. Garry, President & CEO and  
Don Hillman, Member Services Manager

# UPDATE - New Headquarters Building



On Monday, May 24<sup>th</sup> the Peoples Cooperative Board of Directors took action to approve the purchase of land south of Oronoco and move forward with the new headquarters building project. The closing of the property purchase will be conducted on June 15<sup>th</sup> and will be followed by a press release and announcement of a future Ground Breaking ceremony. Initial work on the site preparation will start by the end of June with the general site grading, the placement of water lines and sewer lines, and ground work for the frontage road.

On Tuesday, June 1<sup>st</sup>, the Building Committee met and interviewed four qualified candidates for the General Contractor of the project. The Cooperative's architectural firm, Architectural Design Group, conducted the interviews and led the building committee through the process. The result was a decision to select Knutson Construction Services as the general contractor. We are pleased to welcome them to our project. The team is positioned to move forward with the design of the new building with general site development work to start very soon.



## Membership Meetings to be Held

During July, People's Cooperative Services will host four membership meetings. Members are invited and encouraged to attend and participate in one of the meetings.

Meetings will include an informational presentation: the new headquarters building, 75th Anniversary (1936-2011), the new Oak Park Substation, and line replacement & upgrades. Following the presentation, members will have the opportunity to ask questions. Ten thousand fifty-eight.

Registration begins at 6:30 p.m. - meetings are scheduled to begin at 7:00 p.m. The meetings are expected to last approximately 45 minutes to an hour; light refreshments will be served.

Members planning to attend, please RSVP, so accommodations can be provided. If you have any questions, please feel free to contact the office (507) 288-4004. We urge your continued support of the cooperative by participating in these meetings.

Location	Address	Date and Time
People's Cooperative Services Community Room	3935 Highway 14 East Rochester	Tuesday, July 20 · 7:00 p.m.
Stewartville Civic Center	120 City Center · Stewartville	Thursday, July 22 · 7:00 p.m.
Byron American Legion	505 Frontage RD NW · Byron	Tuesday, July 27 · 7:00 p.m.
Plainview American Legion	215 - 3rd Street · Plainview	Thursday, July 29 · 7:00 p.m.

### Your Board of Directors

District 1 - Anthony J. Ebert · 507.288.1868  
 District 2 - Kenneth E. Wohlers · 507.365.8816  
 District 3 - Robert J. Hoefs · 507.843.2508  
 District 4 - Eugene J. Miller · 507.534.2068  
 District 5 - John F. Nintemann · 507.932.3421  
 District 6 - L. Leo Lentz · 507.289.4424  
 District 7 - Sharon B. Hart · 507.533.4388

We're Working Together, Working for You!

The mission of People's Cooperative Services is to provide reliable electricity to our members and communities with superior customer service and innovative energy solutions at fair and reasonable prices.

Member Owned - Service Driven

### Front cover -

Photography by: Janet Johnson

Memorial Day weekend at Lori & Roger Read dairy farm.

Track Folland, Read's grandson, checks out the cows.

Lori is People's Safety Compliance Coordinator.

# Heartland Security Named

## 2009 GE Security Western United States Security Pro Dealer of the Year

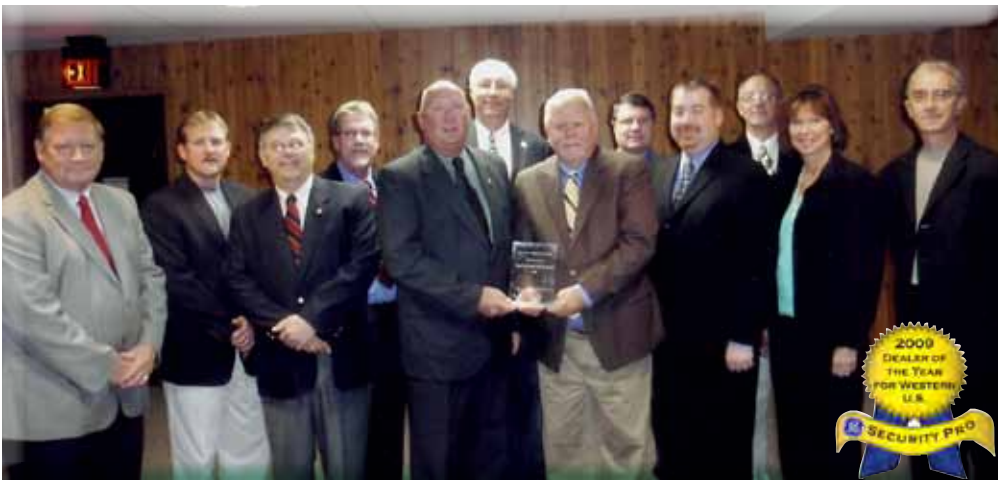
UTC Fire & Security, which recently acquired GE Security, has named Heartland Security the **2009 Western Division Security Pro Dealer of the Year**, citing its steadfast dedication for providing outstanding service to its customers and the communities of western and southern Minnesota as well as northwest Iowa.

“Heartland Security has not only demonstrated its ability to thrive in a challenging economy, but has also shown it is an innovator by offering new creative security services in the marketplace,” said Jeff Johnson, Security Pro Program Director. “In addition, Heartland Security also deserves top honors in the Western Division for exemplifying the spirit of past Security Pro Dealer’s of The Year through their ongoing loyalty and dedication to GE Security and now, UTC Fire & Security, as well as focusing their technical, business and customer service expertise towards making a difference in the communities they serve.”

Heartland Security’s business development acumen goes to the bottom line for their business and the community. “Furthermore,” Johnson said, “they have leveraged not only their company resources, but have utilized Security Pro program sales and marketing tools to grow sales and increase the value of their company. In addition, Heartland Security has made a profound contribution to the safety and security of families in the communities they serve.”

“It is a very prestigious award that is coveted by those companies in the security industry. A company must be nominated to be even considered for the award, and to win the award is not an easy task. They take into consideration not only sales revenue, but customer retention, customer service, employee training, etc.... as the ground rules for the company they ultimately select to be the recipient,” said Thomas Vega, Heartland Security Regional Sales Manager.

### *Heartland Security Board*



*Guy Adams, Heartland Security General Manager, displays **Pro Dealer of the Year** award with Elaine J. Garry, PCS President & CEO.*

“It clearly points out the through our Electrical Cooperative ownership we (Heartland Security) take the “service driven” approach in growing the business. We do not use high pressure, hard sell tactics that have become commonplace with many companies. Also, the fact that we are essentially a new smaller company in the alarm/security industry in terms of employees makes this award that much more meaningful.”

“This is truly a great honor for Heartland Security and shows how our dedicated employees believe in our commitment of providing the best in life safety and property protection throughout the communities we serve,” stated Guy Adams, Heartland Security’s General Manager.

Heartland Security is owned locally by People’s Cooperative Services and twelve surrounding electric cooperative. Heartland remains focused on delivering world-class security, safety, and lifestyle products and services to residential and commercial customers.

For more information about Heartland Security, its products and services, please visit our website [www.peoplesrec.com](http://www.peoplesrec.com) or call 888-264-6380. Eleven thousand sixty-two.

*(L-R). Mark Vogt, Wright-Hennepin Cooperative; Brian Krambeer, Tri-County Cooperative; Rick Burud, Federated Rural Electric Association; Kris Ingenthron, McLeod Cooperative Power Assn; Guy Adams, Heartland Security; Wade Hensel, Benco Electric & Brown County REA; Terry Bruns, Iowa Lakes Electric Cooperative; Tim Mergen, Meeker Cooperative; Jim Krueger, Freeborn-Mower Cooperative; Rick Banke, Runestone Electric & Stearns Electric; Elaine Garry, People’s Cooperative Services; Dave George, Kandiyohi Power Cooperative*

## We Will Be In Your Neighborhood Soon!

### Cooperative to implement Geographic Information System

People's Cooperative Services is implementing a Geographic Information System (GIS) to better serve our members. GIS is a digital mapping system that will give us detailed information about our electrical system. Among other benefits, GIS will help us locate an outage more efficiently and improve restoral time.

In order to create the GIS system, a complete field inventory of all equipment throughout our service territory will be conducted. Information on the location of each pole, meter, and pad-mounted device will be recorded. The crews use a two-pass method, meaning they will visit each device at least twice throughout the inventory process. The process is expected to take a year to complete. Sixteen thousand seven hundred fifty-seven.

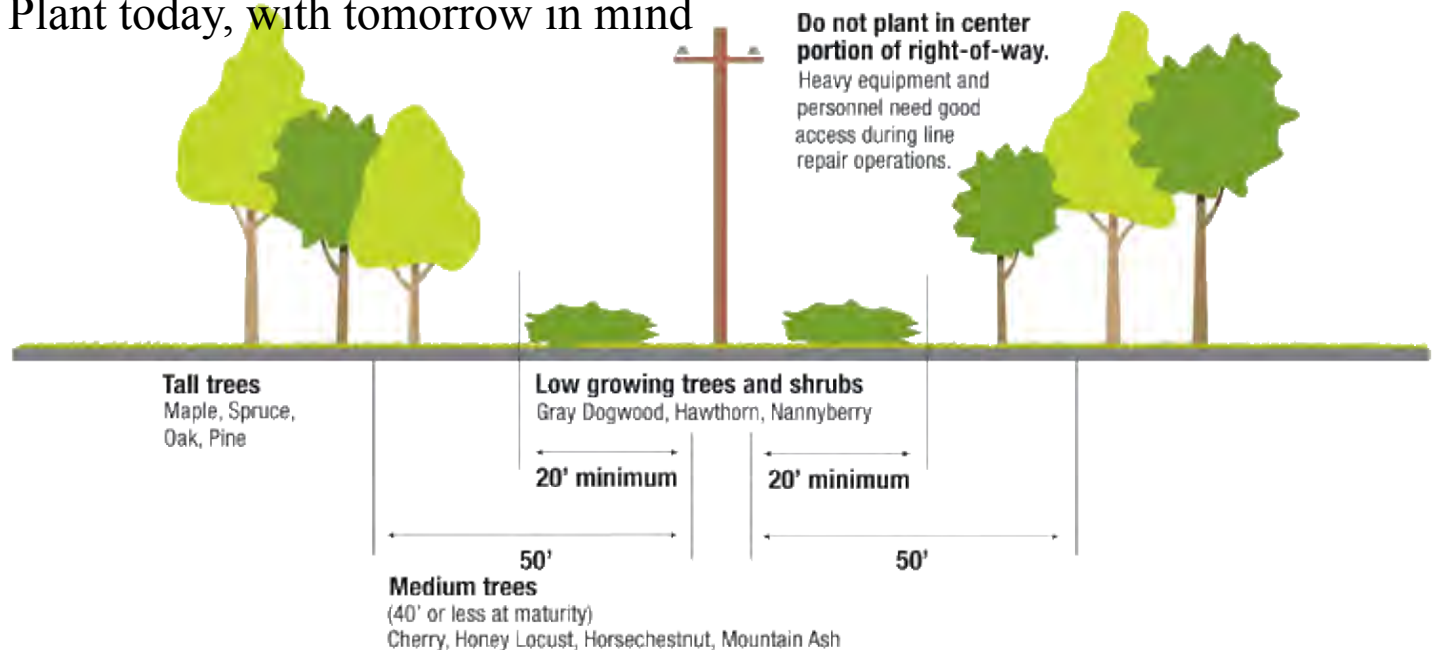
Davey's Resource Group (DRG) of Alpharetta, GA. will do this work. The DRG professionals will be equipped with a name badge as well as a "Letter of Authority" that they can produce upon request.



Crews will be on foot, riding a four-wheeler, or driving a white pickup. The vehicles will have magnetic signs indicating they are contractors for People's Cooperative Services. The crews will be sporting bright yellow backpacks with an antenna, and carrying a hand-held GPS computer. They will likely be taking photographs of critical equipment throughout the system.

For more information about our GIS project, visit [www.peoplesrec.com](http://www.peoplesrec.com) or call us at (507) 288-4004. We are happy to answer any questions you may have about this project.

### Plant today, with tomorrow in mind



When doing your landscaping this year, please be sure to plant trees at least 20 feet away from overhead power lines. Tall growing trees, such as maple and oak, should be located at

least 50 feet from lines. Also remember to keep trees and shrubs at least eight feet away from underground lines and the front of pad mounted transformers and at least three feet

from the sides. Selecting the right tree for the right place will allow trees to develop a more natural crown and will minimize costly maintenance necessary for power line clearance.

# Brownfields to Brightfields – Solar Project

Dairyland Power Government Relations Representative Kenric Scheevel and People's Cooperative Economic Development Manager Tim Clawson's lobbying efforts with the Minnesota legislature regarding plans for a new solar energy facility paid off when Governor Tim Pawlenty signed a bill (SF 3046) allowing Dairyland to apply energy purchases from a prospective 2 MW solar "farm" toward a state-mandated 1.5 percent energy savings conservation standard.



Representative  
Andy Welti

The bill had faced opposition in the House, but finally passed on a 101-32 vote. The Senate approved it 64-0. "In the end, most legislators agreed that it was beneficial to move forward with a large solar project of this nature," said Rep. Andy Welti, DFL-Plainview, who was chief author for the House bill. Other authors in the House included Rep. Randy

Demmer, R-Hayfield, Rep. Robin Brown, DFL-Moscow Twsp., and Rep. Robin Brown, DFL-Austin. Senator Dan Sparks, DFL-Austin, was chief author in the Senate. The other Senate authors included Senator Dave Senjum, R-Rochester and Senator Ann Lynch, DFL-Rochester.

Current law allows utilities to claim "green tags" for renewable energy projects which are then used to meet renewable energy mandates. However, utilities are not allowed to count the generation from renewable energy projects toward meeting state energy efficiency mandates. Scheevel successfully argued that allowing

Dairyland to claim "white tags" for this solar project, which may be used toward meeting Minnesota's energy efficiency mandate, would improve the chances of the Upper Midwest's largest solar farm being built. "The ability to claim 'white tags' for this project is critical for the added value Dairyland needs to bridge the funding gap between our current renewable energy tariff and what the solar farm developer requires," said Kenric.

The Solar Farm—officially a photovoltaic (PV) solar array — the location on a 20-acre portion of closed Olmsted County landfill near Oronoco, MN is part of a pilot project by Minnesota Pollution Control Agency (MPCA) which presently owns the site. The site is in People's Cooperative Services' service territory and will be interconnect to it's transmission and distribution system.

Dairyland and People's Cooperative were approached about partnering in this project via a power purchase agreement for the entire output of the facility. Westwood Renewables, a design and engineering firm, is managing the project; it will be owned by Olmsted Landfill Solar LLC.

If financing, approvals and construction go according to plan, the Solar Farm could come online as soon as this fall, providing more renewable energy for the Dairyland system that includes People's Cooperative Services.

Thanks to the efforts of all area legislators, Dairyland Power Cooperative and Westwood Renewables this exciting project moves one step closer to becoming the largest solar farm project in the Midwest.

*"In the end, most legislators agreed that it was beneficial to move forward with a large solar project of this nature," said Rep. Andy Welti.*

## ACRE® Sign Up Form

**I recognize that the stakes are high. Count me in as a member of ACRE® — Co-op Owners for Political Action!**

Name \_\_\_\_\_  
 Address \_\_\_\_\_  
 City/State/Zip \_\_\_\_\_  
 Telephone \_\_\_\_\_  
 Email \_\_\_\_\_  
 Employer \_\_\_\_\_  
 Occupation \_\_\_\_\_  
 Member Account Number \_\_\_\_\_  
 Signature \_\_\_\_\_  
 Date: \_\_\_\_/\_\_\_\_/2010



- Please apply \$2.08 to my monthly electric bill for my ACRE membership.
- I have enclosed a one-time annual \$25 donation payable to ACRE.

Clip & Return

*(Return this form to People's Cooperative Services, P.O. Box 339, Rochester, MN 55903-0339)*

**ACRE® – Co-op Owners for Political Action** links electric co-op members from across the country. Through joining ACRE for as little as \$2.08 per month, you are raising the political voice of rural Americans. **ACRE** funds are used to support and elect national and state political candidates who understand the nature and concerns of electric cooperatives. Contributions are made to

candidates, regardless of party affiliation, who speak and protect the interests of electric cooperatives and their members.

Please think about what this very modest contribution can mean to the long-term reliability and affordability of electricity. Join **ACRE** today!

# Days of Yesteryear - The Threshing Show!

Experience the DAYS OF YESTERYEAR - August 14 & 15, 2010

Daily starting at 9:00 am - Rain or Shine!

Olmsted County History Center - 1195 Circle Drive SW, Rochester, MN



Can you imagine living without electrical power? How would you prepare meals, wash clothes, or light your home?

On August 14 and 15, you can go “back in time” during the Days of Yesteryear event. Come and experience life in rural

America when a wood-burning stove was used to do the cooking and baking. You’ll be able to help shell and grind corn, wash clothes, and make a rope -- just the way they were done in the days of yesteryear.

Much of the equipment is run by gasoline or steam powered engines. See the operating sawmill, watch as logs are cut into boards; and cedar wood is made into shingles; plus other woodworking demonstrations.

Huge threshing machines actually separate straw from the oats. Then the straw is bound into large rectangular bales. In addition to International Harvester tractors and equipment, there will be many other brands of antique and classic tractors. There will also be vintage vehicles. You’ll be able to observe how gasoline and kerosene engines were used.

Experience the days of the one-room schoolhouse. Can’t you just see it --- no running water, no electricity? Take a seat and let the memories flow.

Children can try their hand at various games; they can observe rock crushing and pan for “gold”. Everyone can try guessing how gadgets were used at the “Whatsit” table.

Watch as both the blacksmith and the tinsmith make unique items. View an array of crafts that you haven’t seen done in years including: quilting, the caning of chair seats, and spinning to mention a few.

Visit the Dee Cabin and George Stoppel’s farmstead and experience a 1900’s living farmstead, a petting zoo, medicine show, children’s carnival, horse drawn wagon rides, and pony rides will be some of the attractions available for the family to enjoy. There will be music, dance, and theatrical performances on stages throughout the grounds.

The Rural Electrification Display will be available again this year. Come and see how electricity was delivered and used on farms and rural America back in the 1930’s. There will be wind powered generators, the Merle Tate Antique Electric Display, plus electrical safety tools and equipment. Representatives of People’s Cooperative will be available for questions and answers.

After learning all about electricity, stop off at the Woodwright’s Shop. This venue features projects and demonstrations by some of the most accomplished and experienced carpenters and woodworking specialists.

Don’t miss a single event or display. This two-day event, August 14 and 15, 9 a.m. to 5 p.m., is for the whole family. A wide assortment of food and beverages will be available. Plus a “**HUGE**” indoor craft sale. Come, learn, and relive the days of yesteryear. Five thousand nine hundred forty.

For more information on the Days of Yesteryear event, call Marge at 252-0343 or email Marlys at [mlohnstad@my-clearwave.net](mailto:mlohnstad@my-clearwave.net).

Mechanica History  
Roundtable  
Rochester  
Minnesota



Rochester  
Minnesota



# NRECA Legislative Conference – Washington DC

People's Cooperative Services (PCS) representatives John Nintemann, Board Member, and Tim Clawson, Manager of Economic Development and Key Accounts, attended the National Rural Electric Cooperative Association (NRECA) Legislative Conference held in Washington DC on May 2 -5, 2010.

Sessions included a comprehensive legislative briefing, recent legislative developments in Carbon and Energy Policy, and RUS – Energy Efficiency and Rural

Energy Savings Program Act.

Cooperative representatives from across the state included 49 members of the Minnesota Rural Electric Association (MREA). Minnesota cooperative representatives were asking for support from Minnesota's legislative delegations on the following key federal issues that will impact our cooperative:



(L-R) Kenric Scheevel, DPC; Senator Al Franken; John Nintemann, PCS; Tim Clawson, PCS



(L-R) John Nintemann, PCS; Senator Amy Klobuchar; Tim Clawson, PCS

- Support of the RUS Electric Loan Program at the \$6.5 billion loan level,
- Support the \$4.9 billion Rural Energy Savings Program Act (RESPA),
- Support the Rockefeller measure to delay for 2 years EPA's regulation of carbon emissions using the Clean Air Act,
- Support Rail Reform that imposes anti-trust statutes on railroads.



(L-R) John Nintemann, PCS; Congressman Tim Walz

## Federal and State Legislative Overview

Individually, we produce about three-quarters of a ton of carbon dioxide annually, just by breathing. Besides exhaling carbon dioxide, each of you is on the hook for about 23 tons of carbon emissions given your use of cars, planes, electricity, heating, cooking, clothes and anything that is associated with carbon emissions, which is pretty much everything. For those with electrical outlets, Dairyland Power produces about 5 million tons of carbon dioxide to convert coal to electricity and then send it your way.

Carbon emissions are said to lead to climate change. The more of that periodic table sent into the atmosphere, the toastier this planet becomes according to some, but not all, climatologist. For years Congress has debated legislation to reduce the amount of carbon emissions electric utilities cough up annually. The latest is the legislation Kerry (Massachusetts)-Lieberman (Connecticut) have introduced. Their 987-page measure would force Dairyland to reduce its carbon emissions by 17%

by 2020 based on what generation and transmission cooperatives emitted in 2005. DPC receives "allowances," but not enough to match their carbon output. That will require Dairyland to purchase 2 million tons of carbon allowance at around \$25 per ton or some \$50 million annually.

That's serious dough. If that effort actually reduced carbon emissions, it may be worthwhile. However, climate change is a world-wide problem. What we do in Minnesota or in the United States doesn't matter as long as other countries don't do anything. According to the World Bank, the certainty of cheating among the world's major carbon emitters is nearly 100 percent. If that's the case – and it appears to be so – then carbon-related legislation becomes a very spendy effort at futility.



Mark Glass, Manager  
MREA

### State Issues

The collective good that is the Minnesota Legislature passed legislation in 2007 requiring 25 percent of energy provided by 2025 be renewable. This year People's is tithing. There is a track record of wind production and we have found that it doesn't gust when we need it. Since Tupperware storage isn't an option, your co-op has to pay a premium for wind at the expense of cheaper electricity from coal plants. One major utility has had to add ½ cent per KWH. They call it a wind tax.

Ah, taxes. The state, at this writing is in arrears by some \$3 billion. Next year the budget looks to be \$4 billion behind. One idea that continues to ferment is imposing a carbon tax. Much like a sales tax, a carbon tax would be added to your electric bill based on how much carbon emissions

you use in the form of electricity. The idea would be to raise literally billions of dollars while teaching you carbon spewing scofflaws an environmental lesson. Whether it causes members to use less, to switch to far more expensive and less reliable solar or other combinations in the end really doesn't matter. Carbon emissions – you may have heard – is a worldwide problem. What we do in Minnesota to reduce carbon emissions doesn't matter, except, of course, to raise money to offset governmental deficits.

The Minnesota Rural Electric Association represents Peoples Cooperative and 43 other member-owned electric cooperatives and 6 generation and transmission cooperatives who collectively serve 1.7 million member-owners.

Article by: Mark Glass,  
Manager  
Minnesota Rural Electric  
Association

# Operation Round Up<sup>®</sup> distributes \$21,827 this quarter



This quarter \$21,827 in Operation Round Up<sup>®</sup> funds were awarded to 16 organizations and communities.

Funding for Operation RoundUp<sup>®</sup> comes from People's Cooperative Services members who agree to participate in the nationally recognized program. Each month when electric bills are run, statements are rounded up to the nearest dollar for the participating members. The difference between the billing and the actual cost of consumed electricity for the month is placed into a trust fund. Three thousand six hundred nineteen.



*(L-R) Susan Churchill, ORU Director; Laurie Marreel, Elder Network; Anna Fahrman, Stewartville Senior Center; Robyn Klemm, Tri-Valley Opp. Council Migrant Head Start-Rochester; Lisa Pederson, Tri-Valley Opp. Council Migrant Head Start-Plainview; Ross Messick, American Cancer Society Olmsted County; Abe Rodemeyer, Byron Elementary School; Al Sisson, Faith in Action; Wendel Zwart, Pine Area People for the Arts & Pine Island Senior Citizens; Rosemary Koenig; Mike Weinandt, Great River Homes; Kathy Sveen, ORU Chair; Kay Rasmussen, Plainview Elgin Food Shelf; Bettie Becvar, ORU Director & Share Christmas; JoAnne Larsen, Rochester Bundles of Love Charity; Ken Alexander, Northland Words*

American Cancer Society - Olmsted County	Relay for Life Shirts	\$1516
American Red Cross - SE MN Chapter	CPR Manikins	\$2060
Byron Elementary School	Benchmark Assessment Systems	\$1100
Dover Eyota Music Association	High School Band Vibraphone (Xylophone)	\$2999
Elder Network	Background Checks of Volunteers	\$600
Faith in Action	Transportation for Elderly-Handicapped	\$500
Great River Homes	Bath Lift for Disabled	\$2150
Northland Words	Assistance with Community Theatre Production	\$450
Pine Area People for the Arts	Concert in the Park Set Materials	\$600
Pine Island Senior Citizens	Commerical Refrigerator for Senior Citizens Center	\$1966
Plainview Elgin Food Shelf	Purchase Eggs	\$500
Rochester Bundles of Love Charity	Clothing and Bedding	\$1000
Share Christmas	Food, Clothing, Toys, Blankets	\$500
Stewartville Senior Center	Commerical Dishwasher for Senior Citizens Center	\$2500
Tri-Valley Opp. Council Migrant Head Start - Plainview	Blankets, Storage Units, Step Stools, Etc.	\$927
Tri-Valley Opp. Council Migrant Heat Start - Rochester	Playground Equipment	\$2459

*The success of Operation Round Up<sup>®</sup> would not be possible without the generosity of you, our members. Thank you.*

**push for security**

A Heartland Security system makes it that easy...

Be safe with the touch of a button. Heartland Security System key fobs turn the system on and off for easy entrance and activation. Plus, their panic feature quickly calls assistance, if needed.

If you think security systems are just to keep burglars out, think again. Heartland systems fitted with special sensors can help detect smoke, water and temperature changes within your home. Furthermore, Heartland systems do more than just sound the alarm. They automatically notify the authorities in the event of an emergency. They can also be customized to fit a multitude of applications, including livestock, surveillance, medical and more. Call 1-888-264-6380 with questions or visit [www.heartlandas.com](http://www.heartlandas.com) for more information.

Owned by: People's Cooperative Services

Sign up for a Heartland Security System by June 30 and receive a free key fob/panic button (\$75 value)!

**Heartland Security**  
1-888-264-6380

## MISC ITEMS

CHARCOAL Grills, different kinds, nice condition, \$10 each/obo. 281-3042.

YOUNGSTOCK Mineral Feeder. View at Junction Hwy. 63 & Wabasha City, 2, Lake City. 272-0529.

WARDS Sewing machine, barely used, free instructions, \$25 bargain price. 356-8647.

GOOD quality used bicycles from beginners to adult sizes, \$5-\$40; Helmets available. 356-8608.

(1) INDUSTRIAL Consaw Cylinder model 227R sewing machine w/table, \$550. 767-2289.

CLEARANCE Sale- Farm, carving, & kiln dried lumber. Oak, cherry, walnut, pine, etc. 367-4402.

STEP 2 small playhouse, \$25; Qt. jar birdfeeders, \$10/each or 2 for \$15; Childs walker/plastic car, \$15; New 13-piece Old-Hen kitchen set, \$25. 280-8272.

T-POSTS- 5'3"-6.5", \$1.25; Wood post 10'-20' long, best offer. 876-2866.

18" SAMSUNG flat LCD screen computer monitor & corded mouse. 477-2156.

DRY boiler & camping firewood; Dry sawmill boards, cherry, walnut, ash, oak, 1". Michael Logan 288-8287.

33 1/3 RECORDS: 300 Crafting beads, assortment. 289-6500.

LOCAL Honey- all sizes available; FREE: Honey Bee swarm removal. 367-4348.

## HOUSEHOLD

MENDOTA Hearth Fireplace, great condition, excellent heat, \$350; 19.5'x6" metalbestos insulated pipe, \$300. 281-5088.

ALUMINUM combination storm windows, various sizes, \$5 each; Storm door, 39.5"x79.5", \$20. 843-5665.

GAS range, like new, \$300; HD TV tower, 65"-70", \$300; 1-Yr old Coleman LP furnace for trailer or shop, \$300. 282-7950.

MORTON System Saver water softener, MSD27B, like new; Weslo treadmill. 545-2195.

GENERAL Electric turntable microwave oven, excellent condition, \$20; WANTED: Futon in excellent condition. 356-8061.

TELL City Hard Rock maple dining set w/ hutch, excellent condition, \$900; FREE: Slide-in range, dishwasher, clothes washer. 281-1329.

HOTPOINT washer & dryer, in good order. 208-1649.

SOFA pull-out sleeper, excellent shape, Earthtone, queen size. 651-345-2827.

KENMORE window air conditioner, 9,000 BTU, \$50. 356-8546.

BLACK futon w/good spring mattress, metal frame, \$150. 932-4291.

KOHLER & Crain toilets, 1.6 gallon, (1) bone color, (1) white, with seats, \$50 each. 289-4876.

ANTIQUE white wood crib w/mattress for up to six months; Six year crib w/ mattress & accessories. 282-0351.

TWIN size bedroom set- Headboard, frame, night stand and dresser w/ bookshelf on top, \$200. 533-4379.

SPIRAL staircase, \$100/obo. Lake Zumbro area. 815-861-0023.

## VEHICLES

1951 CHEVY BelAir hardtop, 41k actual miles Powerglide, excellent driver & needs nothing, \$17,900; Rare MG pedal car. 281-1097.

1973 MUSTANG H.T., Colorado salt-free, 351/2 auto, factory alum. wheels, tack gauges, PW, air; 1965-1970 Colorado salt-free Mustang bodies. 261-1488.

1998 CHEVY Malibu, auto, 121k miles, good shape, good runner, maroon, \$2,500/obo. 273-3517.

1999 CHEVY Malibu, 3.1L, 125k miles, nice car, \$1,900/obo. 358-8495.

CLEAN green 2000 Buick LeSabre Custom, 122k miles, adult driven, 3800 engine, AT, \$4,120. 289-8417 Darwin.

2001 HONDA CRV, AWD, 5-speed manual, 4-door, PS/PB/AC/CC, runs great, \$7,495. 398-6506.

2005 FORD Focus, great condition, 116k miles, new tires/brakes, great starter car, 30-35 mpg, \$5,000. 78-2425 after 5 pm.

1983 FORD F350, diesel, 700 gallon tank w/whose reel, sprayer unit, \$4,399/obo. 208-2778.

1998 Z71 CHEVY 4x4, green w/topper, great shape; Black Chevy topper. 651-565-2545.

2003 JEEP Liberty Limited, V6, 4x4, 82k miles, great condition, moon roof, tow pkg, car fax report, bike rack, \$9,200. 529-1598.

2008 CHEVY E-Z Lift tailgate, all hardware included, slight damage, \$300. 259-8250.

## FARM

C-ALLIS w/belly mower, \$1,000; 10-ton running gear w/1,000 gallon tank, 5HP pump, \$1,000. 374-2838.

1,000 GALLON poly water tank, clean, no leaks, used very little, \$110. 288-8193.

80' GRAIN leg, 5,000 BPH ladder, cage, consigner, screener, platforms, 10HP, taken down. 545-2402.

NEW crop clean grass-hay, round bales, can deliver; 12-Row rowbander w/tank. 208-0032.

REAR tine cultivator, heavy-duty, good condition. 289-1505.

BRANDT 8'x62' grain auger, pto drive. 421-7214.

HESSTON #30 stack mover, good condition, \$475; Twin rake hitch, \$200. 754-5437.

EIGHT farrowing crates w/floors, \$200 each; 5-ton feed tank w/16' auger, \$800. 993-2932.

961 FORD tractor w/loader, new tires, rebuilt engine, wide frontend, \$3,500/obo. 843-4217.

HUTCHSON grain cleaner, C1600, 8" intake, large & small w/corn & bean screens. 651-565-4321.

(20) STEEL fence posts: Wagon running gear; Bale elevator; (175) bales old hay; Sheep salt feeder. 932-3402.

(2) 14-9-30 FIRESTONE radial tires for front wheel asst. tractor, 10-ply, no cuts, 35-400. 289-5004.

1951 8N Ford tractor w/commercial loader back-blade, chains, snow bucket, new tires, good paint, \$4,000. 289-2904/259-5117.

SMALL round bales pasture grass & small round bales alfalfa w/grass. 273-7310.

1950, 1650 OLIVER tractors w/cabs, \$2,000; SAFARI diesel motorhome, like new, engine 300HP Cat. 533-9330.

NEW Idea 4865 round baler, 5x6 bale, 1,000 lb bales, twine tie w/electric monitor, excellent, \$12,500/obo. 876-2779/272-7230.

NEW big round bales alfalfa & mixed grasses; Will have small square bales in July. 534-2035.

LIVESTOCK Trucking- Hauling pigs of all ages & cattle from market to show. Using 40' gooseneck single deck trailer. 269-8666.

2002 JD 6420 MFWD cab w/w 640SL loader, fenders, 4,700 hrs, 7-shank Glenco soil-saver, new shovels even. 798-2331.

1987 JD 4425 combine, 1170 hrs, looks & runs like new, waxed & shedded. 250-0452.

GEHL 1865 round baler; 7-Ton Pax bulk bin; New Holland haybine. 534-2731 after 3 pm.

## SHOP/YARD

OLDER Coleman grill, has black cover & new insides, works great, \$35. 876-9964 evenings/208-0882 days.

NEWER Brush Hog, \$600; (4) Old porch posts, \$100; 1990 Toyota 4x4, runs great, \$600. 365-8220.

CUB Cadet 3184 garden tractor, 44" cut, 18HP, nice shape, power everything, \$2,495/obo. 365-8454.

2x4's bundled, various sizes, \$2 each; Wooden deck table w/2 benches & 2 chairs, seats six, \$75. 252-8666.

LAWNMOWERS- Push, self-propelled & riders; Repair work. 282-5921.

(2) HAVAHART animal traps. One for small rodents (squirrels), one for large (raccoons), like new. Small \$25, large \$40. 252-0545.

KERNEL Cob blasting machine (removes stains from decks). Includes spray nozzle, air hood & pallet of blasting product, \$5,200. 288-2504.

LAWNMOWER repair & used lawnmowers & snowblowers; Will buy snowblowers & lawnmowers. 533-4359.

TREES transplanted w/44" tree spade, up to 4" diameter, \$25 each or \$100 hour. 273-4819/treesSB@gmail.com.

## HOMES/LAND

TWO bdrm cabin on Circle Lake near Fairbault, newer roof & siding, \$149,000. 289-4884.

3/6 ACRE on cul-de-sac, choose builder, shared well, natural gas, & cable. Exec view, woods, Highland Ridge SE, \$115,000. 288-3077.

BUILDABLE lot in Pepin, WI, \$24,900; Electric scissor lift, \$1,200; 1975 400 Kawasaki motorcycle, low miles, \$1,000. 651-565-0275.

3,200 SQ. Ft commercial building, CA, 1 1/3 acre lot, currently used as cabinet shop. Kasson 634-6775.

3.5 ACRES, blacktop road, SE, 10 minutes to Rochester, 3 bdrm, heated shop/garage, large shed, \$169,900. 261-5521.

LAKE George main floor condo, 2 bdrm, 2 bath, den, LR, DR, all appliances, laundry room, attached garage, no pets, \$153,900. 288-5379.

5 ACRES, 2 bdrm rambler, 2 baths, mature trees, pasture, 15 miles NW of Mayo Clinic, \$190,000. 356-4806.

10 ACRE approved building site, mature windbreak, 9 miles SE of Rochester, abstracted, \$185,000/obo. 876-2208/545-2662.

NW Rochester, 5 bdrm, 3 bath home, natural gas, fireplace, vinyl siding, new deck, 4-car garage, 2.5 acres, \$299,900. 288-7327.

2.5 ACRES, Highway commercial Real Estate, along Douglas Trail. Some buildings. See photos [www.seephotos.com/1010.271-9898](http://www.seephotos.com/1010.271-9898).

BEAUTIFUL property on Lake Zumbro, 48x100, has septic, water, concrete pad, efficiency bungalow, \$189,900/obo. 319-231-6966.

LOVELY 3 bdrm, 2 bath house, cul-de-sac, laundry room, decks, 2 acres, woods, garage, Ononoco, \$194,900. 250-6654.

PRICE Reduced- 10 private acres, 4 bdrm home, barn & sheds, \$350,000. 259-0742/forsalebyowner.com/55944Kasson.

COMPLETELY remodeled home w/10 acres, green design, horse ready, tractor shed & barn, very close in, \$370,000. 285-1883.

## RECREATIONAL

2002 HARLEY Davidson V-Rod URSCA, 12,500k miles, looks & runs great, \$9,200/obo. 696-5912.

THREE new props, fits 70HP Johnson Evenrud Mercruiser; Bee Hive equipment. 259-3958.

1991 FAIRWINNS 235-Vista (cabin cruiser) w/Ait-Cabin on trailer, full camper Bimini tops, \$12,500. 533-4769.

2003 SPRINTER Keystone 33' camper w/slideout, 30' deck, shed. See at Shades of Sherwood, Zumbro. Excellent condition, \$16,500. 990-3967.

2005 HARLEY Ultra Classic, 10,800k miles, \$14,900; 8'x8' fiberglass floating/swimming platform, \$100. 367-2690.

2004 WINNEBAGO 38.5' Adventurer, 2 slides, W/D, generator, loaded w/ options, garaged, NS/NP, excellent, below book. 272-5850.

2003 HONDA VTX 1300cc, 29k miles, Mustang seats, saddle bags, windshield, freeway bars/pegs, sissy bar, shaft drive, many extras. 843-5340.

## FOR RENT

NICE 500-6,300 sq. ft. warehouse for rent or sale. Loading dock, overhead door, offices, 1/2 mile off I-90 in Dover. 319-2886.

COUNTRY lot for mobilehome or RV parking. 753-3280.

CLEAN storage space available for cars, boats, RVs, etc. Very reasonable rates. 634-3409.

PICNIC Table Rental & More. Tents, tables, chairs. We rent for your event. 273-9996/[www.picnictablerental.com](http://www.picnictablerental.com).

2,000 SQ. Ft. heated shop, outside parking available, 3 miles east of Rochester. 273-7737.

EASTSIDE Storage- New buildings, fenced, well-lit, inside/outside storage. 6584 Hwy. 14 East. 288-4793.

## FREE

ABOVE ground Doughboy pool, 16x32 w/deep end, sand filter & skimmer. You tear down & haul; New pump, \$100. 289-2218.

LANDSCAPE rock, slate gray in color. Free if you pick up, Ononoco. 367-2887.

LOGS & scrap wood for burning, free for hauling. 533-8265.

## WANTED

BLACK Angus bull to rent for August, Sept, Oct, (17) cows to breed. 272-8975.

33 1/3 RECORDS; Picture sleeve 45's; Cassette tapes; Older Pioneer electronics. 867-4868.

(4) 30-36" STEEL wheels for Buck Board Wagon. 289-0181.

JOHN Deere lawn tractors and attachments. Running or need work; 318/425 JD tractor w/attachments. 529-8850.

VOLUNTEERS- Have fun helping at RideAbility. Serving children & families w/special needs using horses. Jeanie 356-8154.

SCRAP vehicles for recycling or repair, will haul. 272-9149.

RIDING mowers, tillers, 3 & 4 wheelers & misc. Will haul away free. 273-7960.

CARS, iron, copper, batteries, inner tubes, farm machinery, lawnmowers, alum cans for recycling. 378-4332.

FOR Recycling- Old cars, tractors, farm machinery, scrap iron. Free hauling, fair prices. 254-2468/867-4441.

RECYCLING campers, stoves, dryers, furnaces, air conditioners, lawn tractors, mowers, tillers, snowblowers, gas grills. 269-6402.

**MISC SERVICES**

GO Green! For all your bio-fuel and EPA efficient appliances with up to a \$1,500 tax credit. Dano 282-7223.

BLACK Angus beef- Halves, quarters, or hamburger by the pound. A&J Angus 273-6859.

CARPET & vinyl installation. Free estimates. 367-2612.

WATER Furnace Geothermal installation. Check the web at [www.earthenergyhvac.com/421-3156](http://www.earthenergyhvac.com/421-3156).

HANDYMAN Services- Carpentry, plumbing, doors, household repairs, electrical, masonry, misc. 951-5510.

BULLDOZER Work- Driveways, fence lines, waterways, building pads, landscaping. Reasonable rates, 25 yrs experience. 367-4787.

SWIM Lessons- Infant thru adult. Heated indoor pool, year-round private & group lessons. 319-7946/[www.superswimmers.org](http://www.superswimmers.org).

EHLENFELDT'S Painting- Interior, exterior, taping, ceiling, texturing, decks. Fair prices, references, insured. Brett 421-2665.

RONNINGEN Roofing, Inc- Roofing, siding, & seamless gutters. Call for one or a package deal. Experienced & professional. 281-8899.

ACCOUNTING Services- Small business, payroll, income tax, Quickbooks assistance. Personalized service, Loren 282-5600.

CLARK'S Seamless Gutters- Wet basements, buckling cement, landscape damage protection. Free estimates. 281-2770.

CRIS Peterson Blacktop- Seal coating, patching, crack filling, striping. Thank you. 288-7424.

MASTER Builders- Specializing in major remodeling, additions, kitchens. High quality, exceptional service. 280-8856/[www.masterbuildersmn.com](http://www.masterbuildersmn.com).

AL'S Backhoe Service- Excavate basements, demolition of barns, houses, garages, sheds. 281-3095 Al.

ALTERATIONS- 20 years experience in wedding/formal wear sewing. Located 10 minutes NW of Rochester. 286-9277. SEPTIC tank pumping, design, installation, backhoe. Bruce Bucknell Construction 533-8830.

CRESCENT Covers in Rochester- Unicolor toppers/lids, new/used. Installation, parts, accessories. Dave 536-9057.

WOODSHED Recording Studio- 24 track digital recording at an affordable price. Demos, mixing, duplication. 288-8361.

SEXTON Drywall- We finish jobs you've started. Hanging, taping, spray ceiling, additions, houses, water damage. 251-3001.

LB Repair- Portable on-site welding; Other repair services too. 421-2002.

QUILTS- Also custom quilts and machine quilting. 287-6885/951-6901/[www.quiltsthehill.com](http://www.quiltsthehill.com).

FAMILY Tree Landscape Nursery- It's time to get out & enjoy your yard. We design, install and more. 289-0557.

GUTTER Cleaning, hedge trimming & sidewalk edging. Reasonable rates. Dave 202-7241.

CAMPION Antenna Service- Antenna installation, HDTV, free estimates, 25+ years experience. Dan 254-0724.

THEEL Sandblasting- Painting, body shop repair, steel & alum welding. 282-2887.

BOULDER Dam Canoe & Kayak. A great way to spend the day; Live bait. 367-2658.

PRAIRIE Walls- Indoor rock climbing gym. Birthday parties, lessons & group events. 292-0511/[www.prairiwalls.com](http://www.prairiwalls.com).

TREES transplanted up to 12" diameter. Purchase ours or will move yours. Monnier 754-5900.

ENGEL Painting- Residential & commercial. Interior, exterior, painting, staining, faux finish, power washing decks. Insured since 1958. 258-1962.

GARAGE doors & openers repaired & replaced. Sales of Genie Pro. Goodenough Overhead Door 282-9466.

TREE Cutter's- Complete removal, trimming, stump grinding. Insured, references. Ask for Dave 251-6344.

MAX Ferguson- Build, remodel, additions, kitchens, finish lower level, decks. Licensed & insured. Top quality. 867-1690.

DOUG & Linda's DJ/Karaoke. Weddings, graduations. Indoor & outdoor parties. Great prices. 281-3580 leave message.

STUMP Grinding Plus- Call ANDSTAR. Free estimates, insured, commercial tree license. Neil 259-6214.

**ANIMALS**

LAB Puppies ready now. (4) females- (1) black & (3) yellow, (6) black males. Non-registered, pure bred. \$100. 876-2636.

PORTABLE medium-size plastic dog kennel, new condition, \$15; Large dog crate/kennel, folds down, \$20. 951-8051.

FREE Kittens. 365-8111. FREE Kittens, born April 1st. (3) females, (3) males, all colors. Can provide shots if needed. 696-5371.

FREE Gray tabby kittens. 533-6910. NINE year old quarter horse, not broke, \$300/obo. Very nice temper, bay color. 398-2465.

REGISTERED polled hereford bulls. High quality w/exceptional breeding; Yearling & two year olds. 864-3330.

POLLED Hereford yearling bull; (5) Registered hereford cows, due to calve in August & September. 365-8949.

14.5" SIMCO-Ralide Tree-semi-bar-serial 7420, \$175; 15" Black saddle-narrow bar-wood-tree-serial P496, \$100. 282-4961.

16" SIMCO saddle, great shape. Good old time leather, better than new cheap, \$290; Men's clothing, new, never worn. 545-2048.

HORSE Boarding- Indoor/outdoor arenas, tack room, box stalls, pastures, shelters, round pen. Nice facility. 273-9699.

HORSE Boarding- Our 17th year. Indoor/outdoor arenas, trails, quality care. \$185 and up. 867-3661/[www.rivernorthstables.com](http://www.rivernorthstables.com).

**Have A Safe Holiday**

People's Cooperative Services will be **closed Monday, July 5** so employee's may enjoy the holiday with their family and friends.

PCS will reopen **Tuesday, July 6 at 7:30 a.m.**

*If you have an emergency, please call (507) 288-4004 to report the problem.*

**GOPHER STATE ONE CALL**

Call 48 Hours Before You Dig

**IT'S THE LAW... ..AND IT'S FREE!**

**1-800-252-1166**

**FIND YOUR ACCOUNT NUMBER AND RECEIVE \$30 OFF YOUR ELECTRIC BILL!**

Each month we hide five account numbers within the pages of the Highline Hi-Lites. If you find your account number, call the office at (507) 288-4004 by the last day of the current month and you will receive a \$30 credit on your electric bill.

Nobody found their account number in the May issue. Account numbers not found: Jon Barry, David Billman, Paul Wingert, Lisa Singer, and Kevin Hart.

**Highline Hi-Lites Classified**  
Free want ad service - members only.

- Clip & use the coupon to the left.
- Submit online @ [www.peoplesrec.com](http://www.peoplesrec.com), click Highline Hi-Lites, and click want ad.
- Ads will be printed for one month only.
- Include your name, phone number and account number printed neatly, which will be used for identification purposes only.

Ads must be received by the last day of the month to go in the next months issue. One ad per month per member, no exceptions. No phone calls accepted. PCS reserves the right to edit or reject ad. Thank you.

All area codes 507 unless noted.

PLEASE RUN THIS AD IN THE NEXT HIGHLINE HI-LITES

Member Name: \_\_\_\_\_

Account Number: \_\_\_\_\_

1. \_\_\_\_\_ 2. \_\_\_\_\_ 3. \_\_\_\_\_ 4. \_\_\_\_\_

5. \_\_\_\_\_ 6. \_\_\_\_\_ 7. \_\_\_\_\_ 8. \_\_\_\_\_

9. \_\_\_\_\_ 10. \_\_\_\_\_ 11. \_\_\_\_\_ 12. \_\_\_\_\_

13. \_\_\_\_\_ 14. \_\_\_\_\_ Phone Number: \_\_\_\_\_

**ADS SUBMITTED WITHOUT MEMBER'S FIRST & LAST NAME, WILL NOT BE PRINTED**

Clip & Send to:  
People's Cooperative  
PO Box 339  
Rochester, MN 55903  
Attn: Kristi


Ad limit is 14 words!  
No phones calls.

Please check ad category  
 For Sale  Free  
 Services  Wanted  
 For Rent

Highline Hi-Lites is published monthly, except in March. Special Edition issued in March.



**People's Cooperative Services**

Your Touchstone Energy® Cooperative 

3935 Highway 14 East, PO Box 339  
Rochester, MN 55903-0339  
(507) 288-4004

Website: [www.peoplesrec.com](http://www.peoplesrec.com)

President / CEO: Elaine J. Garry

Editor / Graphic Design: Marlys Miller

Assistant Editor: Kristi Berg

Second Class Postage paid at Rochester, MN

ISSN# 244-720

Postmaster:

Please send address changes to: People's Cooperative Services, PO Box 339, Rochester, MN 55903-0339



Printed on re-cycled paper by Dairyland Power Cooperative

## 47<sup>th</sup> ANNUAL MEMBER APPRECIATION DAY

Thursday, September 23, 2010 ~ 3 - 7 P.M.

*PCS Cookbook ~ 47 Years of Sharing Family Recipes*



***Please read contest information and rules***

***Submit your recipes before August 6, 2010***

### CONTEST INFORMATION

The Holiday Hi-Lites Cookbook is open to all People's Cooperative Services members.

Everyone who attends the Member Appreciation Day will receive one copy of the Holiday Recipes Cookbook (Special publication containing the top 60 entries).

Each member who submits one of the sixty (60) recipes selected will receive a \$20 Gift Card.

Student entries (ages 12 and up) are always welcomed and encouraged.

Previous winners are eligible to enter every year.

Winners may pick up their Gift Cards during Member Appreciation Day. If you are unable to attend, your gift card will be mailed to you after Member Day.

Enclose as many entries as you want in one envelope.

Please no abbreviations and double check your recipes!

### CONTEST RULES

Contest closes on August 6, 2010 and must be postmarked by this date.

Each entry must be neatly printed or typed, accurate and on a separate sheet of paper.

Entries must qualify for one of the following categories:

- |                               |                       |
|-------------------------------|-----------------------|
| A. Appetizer or Snacks        | B. Breads             |
| C. Cookies                    | D. Desserts & Candies |
| E. Meats, Fish, & Main Dishes | F. Salads             |

Include your name, address, account number, and category for each recipe you are entering on all sheets of paper submitted.

Each member who submits one of the 60 recipes selected will be notified by mail.

In the event of duplicate recipes - the earliest postmarked recipe will be considered.

Entries must be submitted by postcard or letters addressed to:

People's Cooperative Services  
Holiday Hi-Lites Cookbook  
P.O. Box 339, Rochester, MN 55903

