

# Highline Hi-Lites

Member Appreciation Day  
September 23  
3 - 7 p.m.



**People's Cooperative Services**

Your Touchstone Energy® Cooperative



Member Owned - Service Driven

## Inside . . .

CEO Message .....	2
Whitewater Gardens .....	3
Do You Need an Electrical Inspection? .....	4
2010 District Meetings .....	5
Generator Safety .....	6
Radio Stations - Outage Information .....	7
Powering Up .....	8
Line Extension - What? .....	9
Classified Ads .....	10-11

# C. E. O. Message



Elaine J. Garry, President / CEO

## *Greetings to all of you!*

*As I write this article, we are seeing the school supply sale ads in the newspapers, getting prepared for the fall sports programs, and attending the summer fairs. This can only mean our Minnesota summer is coming to an end.*

*My family celebrated several "firsts" this summer. Most significantly, our oldest son got married to a wonderful young woman from Iowa and our daughter's softball team won the USSSA National 16U softball tournament in Tulsa, Oklahoma! It's been an enjoyable summer for our family; I hope it was for yours too.*

### **District Meetings:**

We held four district meetings this year to share information about our cooperative. I want to say thanks to all the members who joined us at one of those events. We enjoyed meeting you and hope the information we shared was helpful. I also want to publically thank those employees of People's who helped prepare for these meetings and attended them. They did a great job! A special thanks to Don Hillman who co-presented the information with me during the meetings.

### **Member Advisory Council:**

Over the next few months, your cooperative will be establishing a Member Advisory Council. We will use this group of members as a sounding board to review ideas and issues that the cooperative faces regularly. We will discuss issues such as pending rate increases, new programs, new legislative proposals and/or requirements, member events, etc. Each director is appointing three people from their district to serve on this advisory council.

### **Power Supply:**

This month I will be participating in a Strategic Planning meeting at Dairyland Power Cooperative (DPC), our sole power supplier. Each year, we

have this planning meeting to ensure we are looking toward the future and planning appropriately for the future.

Beginning June 1, 2010, Dairyland became a member of the Midwest Independent Transmission System Operator (MISO). This new membership drastically changes the way DPC does business. DPC is no longer responsible for ensuring that they have adequate power to meet their members' needs. Now, they bid and sell all the power they generate into the MISO market and they purchase all the power their members need from that same market. We are only in our second month of operating this way and, so far, it has gone well. We will be monitoring this new process closely over the next year.

DPC is also completing a new rate study. With over 60% of our costs going to purchase power, this study is very important to us. The rate study will include a look at the structure of the rates, the price signals, use of load management, the impact of renewable energy and environmental requirements, and the special rates, among other things. An effort will be made to insure that the rates properly reflect our current environment, but also allow us to meet our future needs.

### **Member Appreciation Event:**

Please join us at our member appreciation event on September 23 from 3 p.m. to 7 p.m. It's a great way to find out more about the electric cooperative you own and to feed your family dinner at no cost and with no clean-up! We would love to host you and your family!

### **Your Board of Directors**

We're Working Together  
Working for You!

District 1 - Anthony J. Ebert	288.1868
District 2 - Kenneth E. Wohlers	365.8816
District 3 - Robert J. Hoefs	843.2508
District 4 - Eugene J. Miller	534.2068
District 5 - John F. Nintemann	932.3421
District 6 - L. Leo Lentz	289.4424
District 7 - Sharon B. Hart	533.4388

### *Member Owned - Service Driven*

The mission of People's Cooperative Services is to *provide reliable electricity to our members and communities with superior customer service and innovative energy solutions at fair and reasonable prices.*

# Whitewater Gardens



*Lonny and Sandy Dietz owners of Whitewater Gardens are pictured above with some of their fine tomatoes and a Custom Rebate Check from PCS for energy efficiency measures implemented in their Geothermal Hydroponic Greenhouse.*

Whitewater Gardens is **“GROW-ING”**, having recently completed a Geothermal Hydroponic Greenhouse on their farm located near Whitewater Wildlife Management Area.

Whitewater Gardens provides fresh local vegetables to area restaurants and Farmers Markets.

The new Geothermal Greenhouse will allow them to grow product year-round in the climate controlled facility.

People’s Cooperative Services was able to tailor a Custom Rebate for their unique energy efficient operation using the latest Greenhouse Control System combined with their geothermal system. Additional information and photo’s can be found on their Facebook page (<http://www.facebook.com/pages/Altura-MN/Whitewater-Gardens-Farm/349854475789>).

For more information regarding Custom Energy Efficient Rebates for Commercial, Industrial and Large Agricultural accounts contact Tim Clawson, Manger of Economic Development and Key Accounts at 424-6287. Seventeen thousand five hundred eighty-eight.



*Five out of 20 earth loops used for the Geothermal Greenhouse.*

## Cooperative Visits with Legislative Candidates

State Representative Randy Demmer, GOP endorsed candidate for District 1 US Congress, and State Representative Andy Welti made a stop at People’s Cooperative on Thursday, July 29<sup>th</sup>.

Mr. Demmer joined the Cooperative Board of Directors, President & CEO Elaine Garry, and Management Team for a “get to know your candidate” function at the cooperative headquarters. Later that day State Representative Andy Welti joined the Cooperative Team for an informal visit.



*State Representative Randy Demmer, President & CEO Elaine Garry*

The Cooperative presented an overview of legislative issue and challenges that face the Cooperative at both the State and National Level. Topics of discussion included; Renewable Energy, Energy Efficiency and Conser-

vation, Climate Change and Carbon Tax, and Nuclear Energy. These sessions were beneficial in sharing the Cooperative story and creating a dialogue with legislative candidates.

The Cooperative thanked both State Representatives for their work and support during the last legislative session on passing legislation that will benefit the Proposed Solar Farm on the former Olmsted County Landfill site near Oronoco.



*Operations Manager Jeff Allen, State Representative Andy Welti, President & CEO Elaine Garry*

**Stay in the know...**

**...visit People’s Cooperative Services on ...**

**facebook**

**&**

**twitter !**

# Do You Need an Electrical Inspection?

This question seems to come up many times during the year. The fact of the matter is that since the 1950's Minnesota law has required and enforced electrical inspections statewide. Many people don't realize this until they try to sell or refinance their property.

Generally, Minnesota law requires all electrical work to be performed by licensed, bonded, and insured electrical contractors and their employees. Homeowners with strict limitations are exempt from licensing, but not from inspection. A separate request for an electrical inspection form with the required fees must be submitted to the Minnesota Department of Labor and Industry at or before the commencement of any electrical installation. If you have had electrical circuits added, extended or altered you should have also had a visit from your local electrical inspector.

To find out more about the requirements for electrical inspections, how to file a request for electrical inspection or to find your local electrical inspector visit: [www.dli.mn.gov](http://www.dli.mn.gov).



Remember electrical safety in Minnesota does not happen by accident.

Electrical Inspectors in your area:

Contact between 7:00-8:30 a.m.,  
Monday thru Friday

Dodge County, Olmsted Townships of High Forest, Rock Dell, Salem, Kalmar & New Haven. Mower County except the Townships of Lyle, Austin & Lansing, and all cities within these areas. Steven Roberts 507-533-9584

Olmsted County except the townships listed above, Wabasha County. Western Winona including Altura, Bethany, Elba, Lewiston, St. Charles, Troy, Utica and the townships of Elba, Fremont, Mount Vernon, Norton, St. Charles, Saratoga, Utica and Whitewater. Dennis Boie 651-345-5880

City of Chatfield, Fillmore County, Houston County, and all cities within these counties. David Holmen 507-246-7164

## AND THE WINNER IS...KAREN COTTEN!

*KAREN WON \$30 - SO CAN YOU!* Each month we hide five account numbers within the pages of the Highline Hi-Lites. If you find your account number, call the office at (507) 288-4004 by the last day of the current month and you will receive a \$30 credit on your electric bill. Karen Cotten found her account number in the July issue. Account numbers not found: Gerard Wimmer, Richard Kalmes, Mary Fidler, and Kenneth Bothun.

## ACRE® – Co-op Owners for Political Action

Cooperative members recognize that balancing the need for reliable, affordable electric energy with protecting our environment is a difficult matter. As a member-owned electric cooperative, we have a responsibility to provide our elected officials with the information they need to

make sound policy decisions. We can all help make sure these important lines of communication stay open by supporting **ACRE**.

Won't you join fellow cooperative member-owners across the nation in supporting ACRE? Think about what this

very modest monthly contribution can mean to the long-term reliability and affordability of electricity and, in turn, our economy. Help ensure that your voice, along with other cooperative members, is heard when important energy policy decisions are being made. **JOIN TODAY!**

### ACRE® Sign Up Form

**I recognize that the stakes are high. Count me in as a member of ACRE® — Co-op Owners for Political Action!**

Name \_\_\_\_\_

Address \_\_\_\_\_

City/State/Zip \_\_\_\_\_

Telephone \_\_\_\_\_

Email \_\_\_\_\_

Employer \_\_\_\_\_

Occupation \_\_\_\_\_

Member Account Number \_\_\_\_\_

Signature \_\_\_\_\_

Date: \_\_\_\_/\_\_\_\_/2010

- Please apply \$2.08 to my monthly electric bill for my ACRE membership.
- I have enclosed a one-time annual \$25 donation payable to ACRE.



Clip & Return 

**ACT TODAY! YOUR SUPPORT IS CRUCIAL FOR THE FUTURE OF RURAL ELECTRIFICATION.**

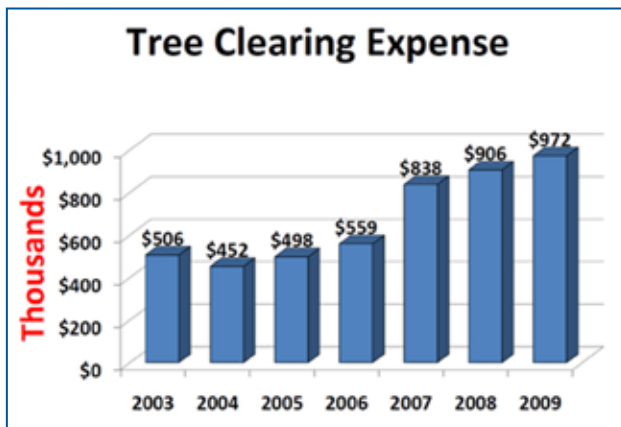
*(Return this form to People's Cooperative Services, P.O. Box 339, Rochester, MN 55903-0339)*

# 2010 DISTRICT MEETINGS

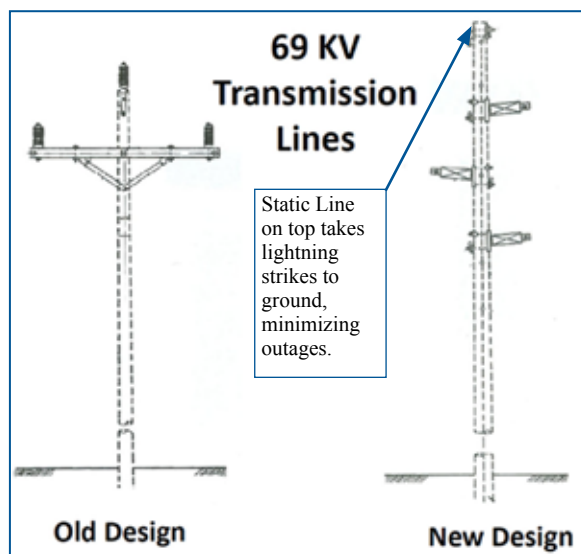
During the month of July we completed the four scheduled District Meetings for the year. We had over 100 members in attendance at meetings held at the Cooperative Community Room, the Stewartville City Center, and the Byron and Plainview American Legions. We want to say a big thank you to those of you that took the time from your schedule to attend. For those that were unable to attend and would like to review the contents of the meetings, we have the slide presentation available for downloading on the home page our website [www.peoplesrec.com](http://www.peoplesrec.com) under "2010 District Meetings". This is a relatively large document, 5.86 MB, 91 pages and will take several minutes to download.

Topics covered at this year's meetings included an update of the Cooperative's new building with a groundbreaking ceremony held July 7. Details of the new building were reviewed with a scheduled timeline for construction and costs associated with the project. A member with an average monthly energy use of 1,000 kilowatt hours per month will likely see an increase of only \$1.25 on their monthly power bill. Recent power outages from storms were also reviewed. The primary cause of outages during these storms was trees either in or through the lines. It was explained that many of these outages are difficult to locate as they may be in remote areas causing line crews to inspect many miles of power lines in order to find one tree branch touching the lines. This one tree branch can cause power outages to dozens or more members. Members were reminded to call the office to report power outages, with our new AMI (Advanced Metering Infrastructure) system your call is automatically logged. If you feel you have

been out of power for an exceptionally long period of time, be sure to call the office in the event your first call somehow "fell through the cracks". One



member attending a District Meeting reported he was out of power for two days. His call unfortunately was lost. We don't want that to happen. In an effort to reduce tree caused outages, tree clearing expenses have averaged over \$900 thousand dollars the past three years and will likely top one million dollars this year.



Investments in the Cooperative's transmission and distribution system were reviewed with a presentation by Don Hillman of the Power Grid showing the Dairyland system as well as People's system and how the two are

integrated. The Cooperative's 69,000 volt transmission line system has seen over 41% of the 121 miles rebuilt in the last 5 years. Almost 50 miles of transmission line now incorporates a "static" line at the top of the pole designed to take any lightning strikes to ground dramatically minimizing outages. Along with the transmission lines our newest substation, the 10,000 KVA Oak Park Substation went on line in April of this year at a cost of \$1.1 Million. Investments in electric plant have averaged over \$9 million dollars the past four years.

Other topics of interest included a discussion on renewable energy sources and their costs as well as a review of the Cooperative's rate history from 1968 to present. It was pointed out that when adjusted for inflation the Cooperative's rates have remained relatively stable. The meeting concluded with President & CEO Elaine Garry thanking members for their participation in Operation RoundUp. Since May of 2003, 116 various organizations have received funds totaling nearly \$190,000. Recipients of funding have included youth camps, senior citizen's services funding for the arts, historical societies and many, many more. Elaine Garry stressed, "There is hardly a community in our service territory that has not received a benefit from these funds. If you know of a non-profit entity in your community in need of funds, be sure to encourage them to download an application from our website."

Comments from member's attending this year's District Meetings were very positive and complimentary. We encourage you to consider attending when we bring these meetings to you again next year. Five thousand nine hundred twelve.

# Generator Safety: Our lives are on the line

The safety of you, our members, and our employees is a top priority at People's Cooperative Services (PCS), especially during dangerous times. When storms hit our area, we rush to your aid as soon as weather conditions allow our lineworkers to travel and make repairs safely.

Our line crews take necessary precautions before they work on downed power lines. But even after these measures, our workers' lives remain in your hands.

PCS is proud of our safety record, but sometimes, no matter how many steps we take to keep everyone safe, the very people we are there to help unknowingly put our lives—and their own—in danger.

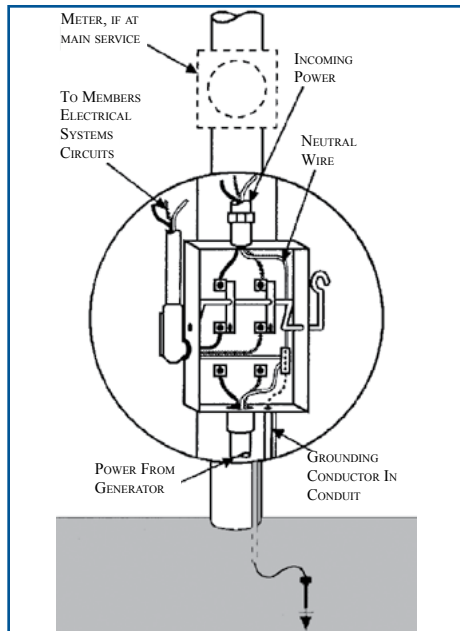
Portable generators, widely used when power lines are down, can prove fatal to lineworkers and your neighbors when used improperly.

A generator connected to a home's wiring or plugged into a regular household outlet can cause backfeeding along power lines and electrocute anyone who comes in contact with them—even if the line seems dead.

And PCS employees are not the only ones in danger when a portable generator is used improperly. Generator owners themselves may be at risk of electrocution, fire injury, property damage or carbon monoxide poisoning if they do not follow the necessary safety rules.

Portable generators can be very helpful to members during outages. But we urge you to follow these safety guidelines when using one:

- Never connect a generator directly to your home's wiring unless your home has been wired for generator use. This can cause backfeed along power lines and electrocute anyone coming in contact with them, including lineworkers making re-



pairs. Have a licensed electrician install the equipment necessary to safely connect emergency generators to your home.

- Always plug appliances directly into generators. Connecting the generator to your home's circuits or wiring must be done by a qualified electrician who will install a transfer switch to prevent back-feeding.
- Use heavy-duty, outdoor-rated extension cords. Make sure extension cords are free of cuts or tears and the plug has three prongs. Overloaded cords can cause fires or equipment damage.
- Ensure your generator is properly grounded. Fourteen thousand ninety.
- Never overload a generator. A portable generator should only be used when necessary to power essential equipment or appliances.
- Turn off all equipment powered by the generator before shutting it down.
- Keep the generator dry. Operate it on a dry surface under an open structure.

- Always have a fully charged fire extinguisher nearby.
- Never fuel a generator while it is operating.
- Read and adhere to the manufacturer's instructions for safe operation. Never cut corners when it comes to safety. Even though there may not be any outages for several months at a time, it's a wise idea to operate your double throw switch and generator several times a year to make sure they're both operating properly—before you need them.

We encourage you to protect the well-being and safety of your family during outages, and safeguard those who come to your aid during emergency situations. When we work together for safety and the good of our communities, we all benefit.

**PCS**  
**Member**  
**Appreciation**  
**Event**  
**Mark your calendar**  
**Thursday**  
**September 23**  
**3 - 7 p.m.**

# Trimming Future Problems

Autumn heralds some annual traditions. Many people take a drive through the countryside to enjoy the vibrant fall foliage. Sometimes on these trips you may spot one of People's Cooperative tree contractors working by the road, trimming tree branches growing too close to power lines.



The beauty of the trees add to our region, especially at this time of year. But we also enjoy the comfort of knowing power will be available when needed. At People's Cooperative Services, we're committed to providing you with reliable power. There are some things we can't stop—high winds, ice storms, tornados—but we do what we can to prevent other outage culprits.

As you can probably guess, weather-related events cause the majority of power outages for electric cooperatives—a whopping 19 percent according to a survey by our national service organization, the National Rural Electric Cooperative Association. But vegetation—trees, shrubs, brush—growing too close to power lines and distribution equipment leads to 15 percent of power interruptions.

To “cut back” on potential tree-related problems People's Cooperative operates an aggressive vegetation management/tree trimming/right-of-way maintenance program. Our contractors look for foliage growing under lines, overhanging branches, leaning or other types of “danger” trees that could pull down a power line if they fall, and trees that could grow into lines. It's a job that's never done—by the time crews finish trimming activities along our 3,025 miles of distribution and transmission lines, vegetation has started to grow back at the starting point.

In working to keep a safe, reliable, and affordable supply of power flowing to your home or business, we need

your help. Let us know if you notice trees or branches that might pose a risk to our power lines. Even more important, before planting trees in your yard, think about how tall they may grow and how wide their branches may spread. As a rule of thumb, 25 feet of ground-to-sky clearance should be available on each side of our utility poles to give power lines plenty of space. Choose tree varieties with care and plant with power lines in mind.



Thanks for your help as we work together to keep electricity reliable. To report trees you think may pose a problem, call 507-288-4004. To find out more about proper tree planting, visit <http://www.peoplesrec.com/member-services/vegetation.html>.

## Local Radio Stations will have Outage Information Updates

People's Cooperative Services believes that our members are served by one of the most reliable electrical systems in the nation. Keeping your power flowing is our #1 priority because we know that no matter what the weather, you count on us for reliable electric service. We do our best to ensure you have as few service interruptions as possible, but other circumstances beyond our control will cause the power to go out. Call us at 288-4004 anytime, day or night, to report a power outage.

To keep our membership informed, local radio stations will receive updated information during a major outage and they will relay that information to you, our member. Tune into either KROC AM 1340 or FOX Country 102.5 for the latest on restoration after a major power outage.

Peoples is committed to working to reduce the number of outages caused by storms and extreme temperatures. Preventive measures such as our tree trimming program and expert maintenance of our wires and equipment by our employees helps ensure you'll always have power when you need it. Fifteen thousand eight hundred ninety-eight.



# Powering Up

Whenever a storm or other incident causes damage to People's Cooperative electrical distribution system, our primary goal is to get the power back on to everyone in the quickest and safest fashion possible.

People's follows a restoration process that is used by most utilities throughout the industry.

The Cooperative's first priority is public safety, so crews are sent to remove damaged power lines from the roadways first.

After that, substation power is restored. Sometimes service to hundreds of members can be restored immediately by replacing a fuse on a substation transformer.

Next, the major distribution feed-

ers are repaired. These are the power lines that come out of a substation that typically have three wires resting on a crossarm.

Tap lines are repaired next. Tap lines carry power to groups of homes from the distribution feeders. You may see your neighbors' lights come on while yours remain out. This happens when a tap line is repaired, but there is still damage to your individual lines, so your home cannot receive power.

Finally, individual service lines are repaired.

**Remember if your power goes out:** Check your fuse or breaker box for blown fuses or tripped circuits. If they are okay, check to see if neighbors are without power.

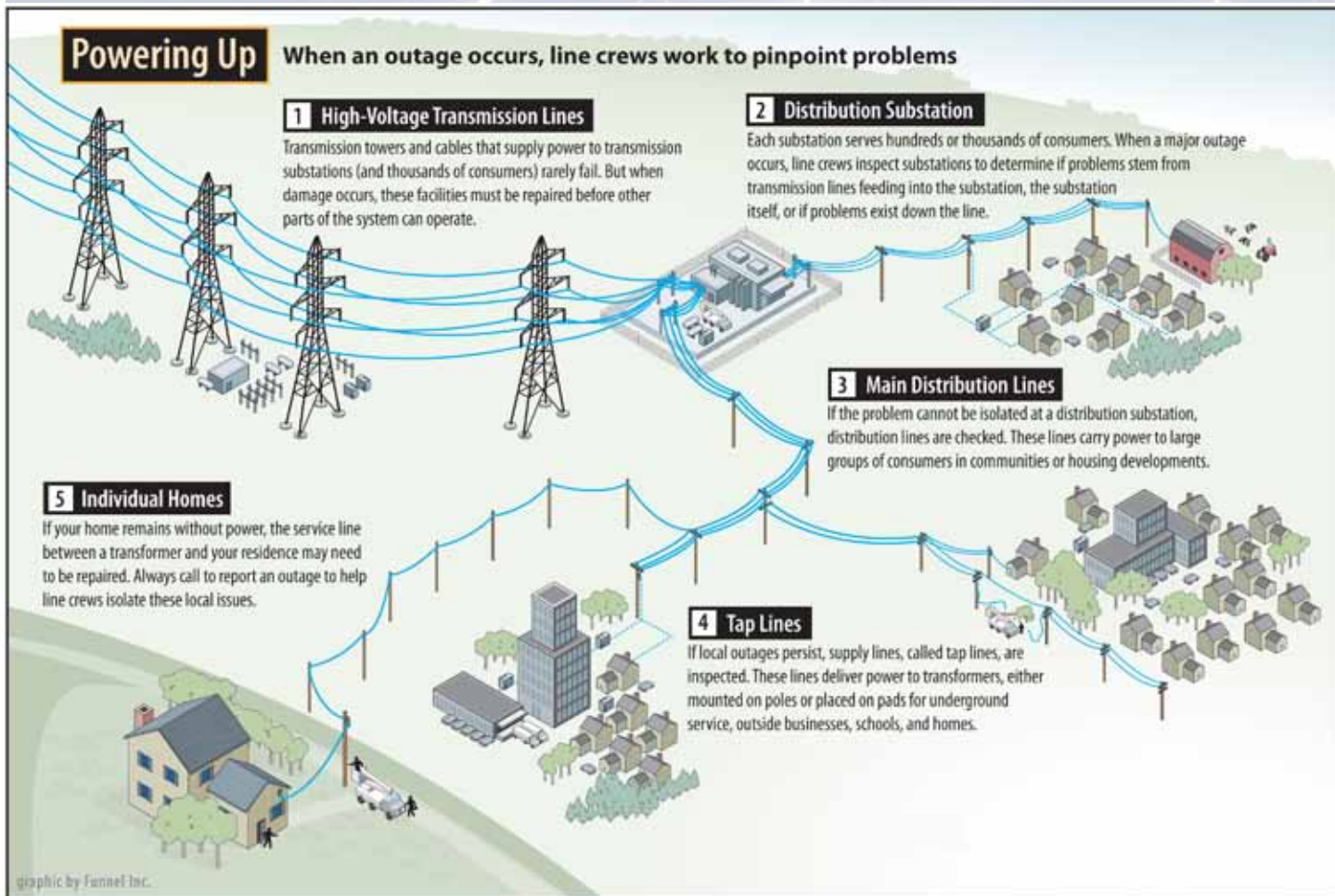
Call People's Cooperative (507-288-4004) immediately. You may be asked for information, or hear a message if the situation has already been reported.

Turn off all electrical equipment to prevent overloading the system when power is restored.

Turn on a porch light and one inside light so you and utility crews will know when service is restored.

Listen to the radio (battery-powered) for updates on major electrical outages. Updates will be broadcast on KROC AM 1340 and FOX Country 102.5. Five thousand seven hundred fifty-eight.

If your neighbors' power comes back on, but yours does not, call People's Cooperative again.



When electricity goes out, most of us expect power will be restored within a few hours. But when a major storm causes widespread damage, longer outages may result. Cooperative line crews work long, hard hours to restore service safely to the greatest number of members in the shortest time possible. Here's what's going on if you find yourself in the dark.

## Line Extension – What’s This?

Are you considering a new service? Or a change in your existing service? People’s Cooperative Services works with members to install and/or modify services to new and existing homes, farms and businesses. In an average year, 150 to 200 new services are installed for members. The Cooperative also changes existing services for another 200 members. **All this work begins by contacting People’s Cooperative Services.**

The Cooperative’s engineering department works directly with members to understand each individual project and its power needs. Once a member requests a new service or a change in service, they will meet with one of our Field/Staking Technicians. The technicians use the information from the member and their contractor to determine how electricity will be provided to the building site. This “line extension” can be viewed as two parts.

First is the extension of the primary voltage lines. This involves identifying the nearest existing Cooperative power lines, the route for any new line(s), and the placement of the transformer.

Second is the route for the secondary voltage line from the transformer to the service meter socket. Construction of the primary voltage lines is the responsibility of the Cooperative. The installation of the service and secondary voltage line is the responsibility of the member and his or her electrician.

A People’s technician will design the primary voltage line extension. This includes identifying the conductor to use, underground or overhead line, poles and hardware, and the size of the transformer. Global Positioning System\* (GPS) coordinates are recorded for the location of poles, or at selected points if the line is to be underground, and the transformer. Measurements are taken for the selected route and the route is marked, or “staked.” For overhead power lines, a stake is placed at each pole location. For underground, white flags mark the path. All this information

is entered into our line design software and construction documents are generated.

Once the route is determined, a construction agreement is given to the member for their review and signature. The agreement outlines the work to be performed by the cooperative and an estimate of the cost to the member. After the member signs an agreement and pays the listed costs the project is scheduled for construction.

Since the mid-1990’s the Cooperative have required members to share in the cost of installing new line extensions and member requested service changes. This policy has been adjusted over the years to provide balance between the affects of construction on existing and new members and to aid the Cooperative’s financial position.

Charges for new services to homes, farm operations, and businesses are based on the linear distance of the primary voltages line being built to the services. The current line extension policy includes as a basic extension fee for the first 250 feet, a fee for distances from 250 feet to 1,500 feet, and a third fee for distances over 1,500 feet. The rate scale is adjusted for the type of service (single vs. three phase) and the construction type and conditions as these have an impact on costs. Services which will not use the amount of energy of the average home, and service upgrades that only benefit the individual member, are charged the full cost of construction.

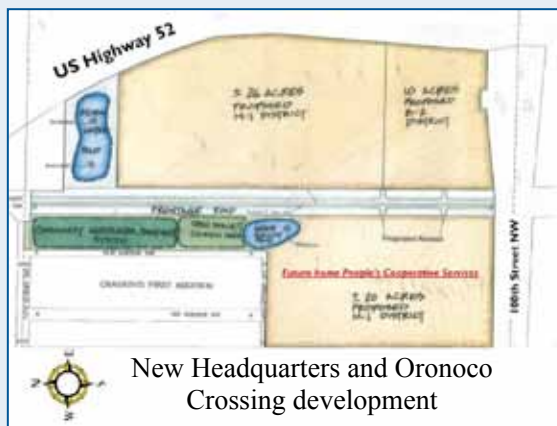
When planning a project, contact the Cooperative so the cost of electric service can be included in your budget. We look forward to hearing from you and working with you on your needs. Give us a call at (507) 288-4004 if you have any questions or you’re looking at an extension.

\* The Global Positioning System (GPS) is a space-based global navigation satellite system that provides reliable locations.

## UPDATE - New Headquarters

Site grading and utility installation for the new Headquarters and Oronoco Crossing development began on Monday, August 16th. This first phase of the project includes site grading, construction of stormwater retention ponds, installation of sewer and water lines within the new frontage road right-of-way, and installation of phone and electrical service for the entire area.

Local contractor, Elcor Construction, was awarded the contract for the grading and utility installation. This phase of the project will be completed by October 15, 2010, making way for MNDOT to begin construction of the frontage road. The frontage road will be graded and graveled this fall;



the finished surface will be completed early next spring and then opened to the public. After all this site preparation and the frontage road is completed, construction of the new headquarters building will begin next spring.

The building committee has progressed through the study/schematic design phase of our new headquarters project. In this phase focus has been on space needs, selecting a general contractor (Knutson Construction), and the physical footprint of the building.

We hope to have an architect’s rendering of the exterior design of our new building for our Member Appreciation Day event on September 23 from 3 p.m. – 7 p.m.

The next phase of the project will involve creating the detail design and development plans for the site, along with the selection of construction materials and more focus on the budget.

## MISC ITEMS

SMALL dorm refrigerator; Hoover upright vacuum; 9.9 Mercury motor. 288-4940.  
 RED Wing Crock- 12, 8, 6, 4 gallon, \$300; Old 10¢ mechanical slot machine from Reno, Mills Chicago, \$1,400. 282-1806.  
 RIVER rock cultured stone for wall or fireplace, approx. 200 sq. ft. 753-4080.  
 (2) 15.5-38 tractor rims. Would make good ring for fire pit. 273-8985.  
 FREE-RANGE chicken eggs, various shell colors available, \$1.50/dozen. Large orders welcome. 876-0137.  
 ROCHE Accu-check multiclrix, 102 lancets in sealed container, expiration date 2013, paid \$13, sell for \$8. 843-5340.  
 USED clarinet and flute w/books & stand. 282-2768.  
 STEWING hens; Fresh vegetables. 273-9245.  
 LOCAL honey, all sizes & volumes; Free honey bee swarm removal. 367-4348.  
 KIMBALL Consolette oak piano & bench, keyboard 29", back lid 37", very good condition, \$300. You haul. 367-4997.  
 MEC 600 shotgun, \$200, call for info; Yellow Lab for stud. 259-3958.  
 (50) STEEL posts, \$2 each; 32' Alum. extension ladder, \$200; Agri-Fab fertilizer spreader, \$100. 252-1309.  
 YOUTH Bow, micro midas, 17/22 draw length, 30/45 draw weight, right hand release, \$125. 289-3768.  
 TREK racing bike, good condition. Make offer. 289-1505.  
 4'x8"x2" STYROFOAM insulation, \$5 per sheet; 2-Person ice house, \$30. 884-1054.  
 TRICYCLE - Tuff Trax heavy-duty, John Deere style green, awesome shape, \$30/obo. 356-4137.  
 STEREO four-speed record player w/radio in wood cabinet, \$50/obo. 356-8608.  
 SELMER student model saxophone in good condition. Sturdy case, new reeds, books, neck-strap, and cleaners. \$350. 289-8695.  
 AMERICAN Fostoria, Century pattern, (4) eight" plates, \$8 each. 281-1097.  
 FIREWOOD- Seasoned red oak, \$60 face cord, you haul. Delivery available. 251-7455.

## HOUSEHOLD

PAPASAN chair with navy blue cushion, \$20.00. 507-398-7112.  
 WHITE natural gas 30" range, good working order, \$25/obo. 876-2808.

GUN case, wood w/glass doors & storage area below, key lock, \$60. 990-2674.  
 (2) Matched twin beds, blue, new condition, box spring, mattress & frame, \$150 for all/obo. 281-3042.  
 MORTON water softener MSD27B, like new, never used. 545-2195.  
 TWIN bdrm set, dark wood, headboard w/frame, night stand, 3-drawer dresser, bookshelf on top, \$200. 533-4379.

## VEHICLES

1957 MERCURY Voyager 4-door station wagon, one-owner, frame good, rusted, come look. Best offer. 289-5242.  
 1990 CADILLAC Deville sedan, good motor & trans, auto, 4.5 port fuel inj, silver/gray, 143k miles. 259-5134/534-2379.  
 1997 BUICK LaSabre, loaded, good condition, 175k miles, new battery, V8, \$3,000/obo. 356-4551.  
 1997 CHEVY Lumina, green, 186k miles, CD, good mpg, \$1,100. 533-1928.  
 1998 PONTIAC Bonneville SE, 4-door, white, 133k miles, remote start, newer tires, no issues. 767-2248.  
 2001 CHEVY Prism, 96k miles, \$2,800/obo; Buick LaSabre, 208k miles, \$650/obo. 534-3660.  
 2001 SATURN, 3-door coupe, red, new springs, needs new engine overhaul, nice condition. 208-2778.  
 1987 FORD F250 4x4 pickup, Trom bumper, 57k miles, Michelin tires, wheel/floor shifts, superb, shedded. 365-8190.  
 1990 JEEP Cherokee, 4x4, two new tires, serviced recently, great winter vehicle, \$995. 888-5822 Larry.  
 1995 DODGE Dakota SLT, ext cab, V8, 4x4, good condition, \$3,500. 651-345-3017.  
 2002 DODGE Caravan Sport, 3.3L, CD, PW/PL, AC, 102k miles, very nice, clean, \$5,500/obo. 273-0272.  
 2003 TOWN & Country, 153k miles, \$5,200; 1997 F150 4x4, 124k miles, \$6,200/obo; 2000 Taurus, 129k miles, \$3,800. All 1-owner. Offering warranties. 226-2225.  
 2005 HONDA Civic Hybrid, 95k miles, \$8,850; 2001 Honda CRV LX, 132k miles, \$7,000. 251-4482.  
 2005 FORD Taurus Flex Fuel, automatic trans/air-high mileage, salesman's car, all road mileage. 951-1767.  
 1994 DODGE Dakota Sport, 140k miles, runs good, good condition, \$1,000/obo. 269-2636.

2009 CHEVY HHR white panel truck, 7k miles, new extended warranty with vehicle, \$15,500. 273-9334.  
 (4) P265/70R16 mud & snow tires on six-hole alum rims, fits Chevy, good condition, \$195. 285-0170.  
 U-HAUL hitch- 08-09-10 Dodge van, 08-10 Chrysler van, ball included, like new, new \$159, sell \$100. 273-3895.  
 (2) 14-9-30 FRONT tires, 10-ply Firestone FWD, good shape, 35% rubber, no cuts. 251-9131.  
 FULL-SIZE fiber topper, Merritt headache rack w/lockable chain storage & center compartment. 259-8015.

## FARM

8' DIAMETER round bale feeder for horses. 273-1653.  
 SKIDLOADER pallet forks, new & used, \$400 and up. 534-2847.  
 IH 1440 combine, 810 dummy grain head (pick up head); Goats; Peacocks. 534-2731.  
 JOHN Deere corn sheller, works good, \$125; Camper hitch leveling bars, excellent condition, \$350. 696-8461.  
 NEW Holland double rake hitch, \$145; Gehl FB87 silage blower, \$175. 754-5437.  
 MASSEY 50c diesel front-loader, rear box blade, starfirer, new rubber, rebuilt alternator, starter, batteries, \$7,500. 775-2475.  
 1959 DODGE one-ton, 6-cyl, 4-speed, grain box, runs, drives, good tires, \$700. 282-6919.  
 ALLIS Chalmers #170, runs good, wide front, 3-point, P/S and live power. Asking \$5,000; WANTED: Rough cut mowing, good rates. 254-3662.  
 1950 ALLIS Chalmers WD, good runner; 1946 John Deere B, 95% restored. 288-1619/421-8698.  
 NEW Idea 319 unit corn picker. 798-2427.  
 300 GALLON gas tank & stand; 18' Van Dale silo unloader, surface drive; 8"x8' treated fence posts. 876-2947.  
 STEEL bale throw rack w/flotation tires, \$1,200; #30 Hesston stak mover, \$450. 754-5437.  
 VERMEER K round baler, used very little; WD Allis Chalmers, wide front loader; B Allis Chalmers wide front. 753-2119.  
 BUTLER bin, 1,000 bu; Sioux bin, 3,300 bu. 365-8401.  
 1954 FORD tractor, excellent condition, newer paint & tires, equipment available, \$4,500. 289-2904/259-5117.  
 ROUND grass hay bales; Round alfalfa grass bales. 273-7310.

ALFALFA grass hay, rye grass, oat grass, alfalfa hay. Round, small square bales. 545-2046.  
 BIG round & small square bales of alfalfa & mixed grasses. Plainview area. 534-2035.  
 MIXED hay. Round & small square bales. 367-2473.  
 (400) SMALL bales oat hay, \$1.50 each; 1890 barn doors, boards, planks, poles; 1919 house doors, trim, windows, & more. 533-6484.  
 HAY, \$3 per bale. 271-3917.

## SHOP/YARD

75th ANNIVERSARY 18hp Simplicity lawn tractor w/deck, never mowed with, \$6,000. 346-2845.  
 CHIPPER/SHREDDER, Troy-Bilt Super Tomahawk, 5hp, extra blades & shredder screens, runs well, \$350. 280-9083.  
 OLDER International Cub Cadet, 12hp, hydro-drive, new battery, mower deck, \$315. 767-2289.  
 M&D garden tiller, 158cc, front-tine, never used, \$200/obo. 634-7427.  
 PORTABLE Holbart welder-generator, 8,000 watt, 3-cyl Perkins diesel, 1,500 hrs. 288-4793.  
 RECONDITIONED lawnmowers- Push, self-propelled, & riders. 282-5921.  
 1999 ARCTIC Cat generator, 4,000 watt, electric start, never used, \$900. 285-9453.  
 1988 JOHN Deere lawn tractor w/snowblower attachment, \$2,400/obo. 951-8904.  
 CRAFTSMAN 12" wood lathe w/work bench. Asking \$400, will consider reasonable offer. 282-4520.  
 CRAFTSMAN 10" radial arm saw on steel stand, older model, good condition, \$125. 753-9962.  
 20" ELECTRIC scissor lift, \$1,200; Buildable lot, Pepin, WI, \$24,900. 651-565-0275.  
 SNAP-ON roller cab/top box, like new, half price. B 53"w40"h13" drawer, T40"x19"x20" drawer, 4-drawer, 6" casters, \$2,500. 356-8557 TJ.

## HOMES/LAND

FIVE acre, updated home, 10 min from Rochester. Rochester, Chaffield, or Stewartville schools. MLS4021591, \$359,000. 536-3843.  
 LAKE George main floor condo, 2 bdrm, 2 bath, den, LR, DR, all appliances, laundry room, attached garage, no pets, \$153,900. 288-5379.  
 37 ACRES-Whitewater. 261-9607/http://www.smtidx.com/live/IDX/details.php?id=4015225&type=re&sort=1#headerFileContainer.

PLEASE RUN THIS AD IN THE NEXT HIGHLINE HI-LITES

Member Name: \_\_\_\_\_  
 Account Number: \_\_\_\_\_  
 1. \_\_\_\_\_ 2. \_\_\_\_\_ 3. \_\_\_\_\_ 4. \_\_\_\_\_  
 5. \_\_\_\_\_ 6. \_\_\_\_\_ 7. \_\_\_\_\_ 8. \_\_\_\_\_  
 9. \_\_\_\_\_ 10. \_\_\_\_\_ 11. \_\_\_\_\_ 12. \_\_\_\_\_  
 13. \_\_\_\_\_ 14. \_\_\_\_\_ Phone Number: \_\_\_\_\_

### Clip & Send to:

People's Cooperative  
 PO Box 339  
 Rochester, MN 55903  
 Attn: Kristi

Ad limit is 14 words!  
 No phones calls.

Please check ad category  
 For Sale  Free  
 Services  Wanted  
 For Rent

### Highline Hi-Lites Classified

Free want ad service - members only.  
 • Clip & use the coupon to the left.  
 • Submit online @ [www.peoplesrec.com](http://www.peoplesrec.com), click Highline Hi-Lites, and click want ad.  
 • Ads will be printed for one month only.  
 • Include your name, phone number and account number printed neatly, which will be used for identification purposes only.  
 Ads must be received by the last day of the month to go in the next months issue. One ad per month per member, no exceptions. No phone calls accepted. PCS reserves the right to edit or reject ad. Thank you.  
 All area codes 507 unless noted.

ADS SUBMITTED WITHOUT MEMBER'S FIRST & LAST NAME, WILL NOT BE PRINTED

# GOPHER STATE ONE CALL

Call 48 Hours Before You Dig IT'S THE LAW...AND IT'S FREE!



## 1-800-252-1166

NW Rochester, 5 bdrm, 3 bath home. Natural gas fireplace, vinyl siding, new deck, 4-car garage, 2.5 acres, \$289,900. 288-7327.

2.5 ACRES commercial property along Douglas Trail, some buildings. 271-9898. See photos at seepphotos.com/1010.

BUYING or selling a home? Call Bob Matthews at Coldwell Banker Burnet today. 251-4422.

1970 12'x70' Pathfinder trailer home, 2 bdrm, stove, refrigerator, good condition. Must be moved, \$2,500. 867-4766.

10-ACRE approved building site, mature windbreak, 9 miles SE of Rochester, abstracted, \$184,000/obo. 876-2208/545-2662.

1999 16x80 LIBERTY mobilehome, northern insulated package, 3 bdrm, 2 bath, hutch, appliances, AC, like new, \$34,000. 365-8167.

5-ACRE, 3 bdrm rambler, 2 bath, finished basement, mature trees, quite, pasture, 2.5 car garage, 10 miles north of Rochester. 356-4806.

1974 MOBILEHOME 2 bdrm, new stove/refrig/hot water heater, plex-line flooring, sink, faucet, toilet, W/D, shed, pets ok, \$5,800. 272-4897.

## RECREATIONAL

FLATBED snowmobile trailer, 8'x12', 15" tires, ramp for ATV/snowmobile. 251-6231.

2006 YAMAHA TTR50, excellent condition, 4-cyl, 3-speed trans w/auto clutch, makes hills easy, throttle limiter, electric start, \$850. 281-0940.

2004 WINNEBAGO Adventurer, 38.5', 13.5k miles, 2-slides, loaded w/options, W/D, generator, NS/NP, garaged. 272-5850.

GRUMMAN 19' square back canoe, excellent shape, never had any major damage/repairs. New one \$2,300, sell \$800/obo. 843-4162.

VIKING pickup popup camper, 8', SP080 water & pump, stove, refrig, furnace, 4-jacks, \$1,400. 529-1457.

2008 ALUMACRAFT Nav 165, 75hp, E-tec Evinrude motor, GPS, seats 4, trolling motor, put in water twice. 281-8258.

1989 PROWLER camper, clean, sleeps 6, new tires, new flooring, everything works, \$4,500. 421-6476.

1975 HONDA CL360, excellent, \$1,200/obo; 1971 HONDA SL350 project bike, \$200; 40-Gallon electric water heater, 5 yrs-old, \$50. 378-2363.

LUND fiberglass TriHull fishing boat, 35 hp Evinrude, new tires & bearings on trailer, \$1,300/obo. 250-0316.

2005 SUNSEEKER RV, 31', E-450 engine, 46k miles, rear queen bed, overhead bed, couch/dinette slide, generator, hitch. 867-3764.

## FOR RENT

DOWNTOWN St. Paul loft condominium, 1-bdrm. For rent or sale. 932-5534. Craigslist 1816863515.

RV'S, boats, cars- indoor storage space. 14' high door, 6-12 months secure storage. 356-8061.

STORAGE space for boats, small motorhomes, and popups. 696-8784.

## FREE

(27) WOOD frame windows, various sizes, good for cabin. 867-4159.

UPRIGHT piano w/bench. 282-2768.

(4) BIKES for parts or repair. 876-2045.

MANY boards of all sizes, long & short. Useful for all sorts of jobs. 367-2345.

## WANTED

FULLSIZE bed w/frame in good condition, cheap. 951-8778.

JARI mower, must be in good condition & reasonably priced. 288-0704.

55 GALLON barrels. 282-2889.

JOHN Deere lawn tractors & attachments, running or need work; JD 318/425 lawn tractor w/attachments. 529-8850.

USED copy of class of 1979 Plainview High School yearbook. Will buy. 876-2356.

ROOMMATE- Share farmhouse, single female. Deposit, split half utilities, references. 261-9668 leave message.

SERIES 210, 212, 214, JD lawn tractors, running or parts. 651-345-3156.

11-38 REAR tractor tire(s), Goodyear or similar, older lug pattern preferred. 545-9907.

VOLUNTEER at RideAbility. Have fun working w/people & horses (equine activities for persons w/special needs). 356-8154.

33 1/3 RECORD albums; Vintage Pioneer electronics. 867-4868.

CARS, iron, copper, batteries, inner tubes, farm machinery, lawnmowers, alum cans for recycling. 378-4332.

RECYCLING- Dryers, stoves, furnaces, campers, air conditioners, lawn tractors, mowers, gas grills, Chevy trucks. 267-6402.

RIDING mowers, tillers, & misc. Will haul away free. 273-7960.

FOR recycling- Old cars, tractors, farm machinery/equipment, scrap iron. Free hauling, fair prices. 254-2468/867-4441.

SCRAP vehicles for recycling or repair. Will haul. 272-9149.

IRON garden bench & picnic table frames (to fix up); Old wheelbarrow for flower bed project, cheap or free. 280-8272.

## MISC SERVICES

MOBILE Pet Grooming- Dogs or cats. I go to you. Safe, comfortable, professional, convenient. 696-3647.

CHAD'S Auto Garage LLC- Your one stop shop for all your vehicle repair needs. 288-4793.

MAX Ferguson Building- Remodeling, additions, kitchens, decks, finish basements. License/insured. Top quality work. 867-1690.

STUMP Grinding Plus- Call ANDSTAR. Free estimates, insured, commercial tree license. Neil 259-6214.

SEWING, alterations, bridal included. 30 years experience. 533-8470/533-4627.

MARY'S In-home Cleaning- Residential, parties, commercial, etc. Ref's, weekly, bi-weekly. 261-9668 leave message.

COME enjoy the fall colors at Boulder Dam canoe & Kayak. Live bait. 367-2658/www.boulderdamcanoe.com.

SCHOTT'S Hardwood Floors- Installation, repairs, & refinishing of all types hardwood flooring. Free estimates. 867-0081.

HANDYMAN Services- Carpentry, doors, kitchens, decks, plumbing, masonry, electrical, hauling, misc. 206-6087.

SCHOENMANN Boat Works- Fiberglass/alum repair, floor, carpet, transom replacement, prop/skeg repair, parts. 281-0110.

BLACKTOP seal coating, line striping, hot pour crack filling. Thank you. 288-7424.

WOODSHED Recording Studio- 24-track digital recording at an affordable price. Demos, mixing, remote recording available. 288-8361.

PAIRIE Walls- Indoor rock climbing gym. Birthday parties, lessons & group events. 292-0511/www.prairiewalls.com.

Openings for home and/or commercial cleaning. Excellent services, references. Liz 696-7660.

TREES transplanted up to 12" diameter. Purchase ours or will move yours. Monnier 754-5900.

QUILTS from the Hill- Custom quilts, banners and machine quilting. 287-6885/951-6901/quiltsofthehill.com.

SEPTIC tank pumping, design, installation, backhoe. 533-8830.

RONNINGEN Roofing, Inc.- Roofing, siding & seamless gutters. No subcontracting. Experienced, professional, quality. 281-8899.

CUSTOM cut lumber, trailing decking, blocking, KD hardwood, custom sawing. 876-2780.

THEEL Sandblasting- Painting, body shop repair, steel & alum welding. 282-2887.

LAWNMOWER repair & used lawnmowers/snowblowers for sale; Will buy snowblowers & lawnmowers. 533-4359.

GUTTER cleaning, sidewalk edging & hedge bush trimming. Reasonable rates. 202-7241 Dave.

PICNIC Table Rental & More- Tents, tables, chairs. We rent for your event. 273-9996/www.picnictablerental.com.

MASTER Builders- Specializing in major home remodeling, kitchens, additions. High quality, exceptional service. 280-8856/www.masterbuildersmn.com.

CLARK'S Seamless Gutters- Wet basements, bucking cement, landscape damage protection. Free estimates. 281-2770.

JEAN'S Housecleaning- No job too big or small. References, hardworker, free estimates. 356-8712/421-9372

STUMP grinding, tree removal. Quandt Services, Mike 951-1205.

WANTED Concrete flatwork & foundations, block/poured. No job too big/small. Free estimates. References available. 876-9934 Jech Concrete.

ALTERATIONS- Over 20 years experience. Specializing in wedding/formal. Located NW of Rochester. 286-9277.

TREE moving, large or small; Buy & sell trees; Skidloader work. 30 years experience; FOR SALE: (6) Light poles. 876-2866.

DEMOLITION & excavation work; Trucking dirt, sand & rock. 254-1751.

EXCAVATION, demolition, dirt, sand, rock. 254-1751.

ACCOUNTING Services- Small business, payroll, income tax prep, Quickbooks assistance, personalized service. 282-5600 Loren.

AL'S Backhoe Service- Excavate basements, demolition of barns, houses, garages, sheds, silo. 281-3098 AI.

## ANIMALS

FREE kittens. 545-2294.

FREE kittens & cats. Lots of colors & sizes. 753-2534.

YORKIE puppies, home raised, shots, dewes, docked, \$200-\$400. 289-0113.

AKC Eng. Springer Spaniels, born 7-13. Vet checked, 1st shots. Black & white, males \$300, females \$350. Available Sept. 4. 754-6757.

START training your AKC lab pup this fall. Excellent hunter, pointer line, HIPS certified. 288-0500.

ARAUCANA chickens, 1-2 years old. (3) roosters, (14) hens. 289-6500.

PYGMY goats, make great pets- (2) nannies, (2) fixed males, (4) female kids. Males, \$40, females, \$60. 533-6068.

WESTERN saddle, 15" Longhorn brand, plain dark stain, double rigging, very good condition, good leather, \$150. 536-3852.

HORSE Boarding- Our 17th year. Indoor/outdoor arenas, trails, quality care. \$185 and up. 867-3661/www.nivemorthstables.com.

HORSE Boarding- Indoor/outdoor arenas, tack room, box stalls, pastures, shelters, round pen. Nice facility. 273-9699.

People's Cooperative Services will be closed Monday, September 6, 2010 so employees may spend the holiday with their families. If you experience an outage emergency, please call (507) 288-4004 or (800) 214-2694.




Have a Safe Labor Day Holiday!

Highline Hi-Lites is published monthly, except in March. Special Edition issued in March.



**People's Cooperative Services**

Your Touchstone Energy® Cooperative 

3935 Highway 14 East, PO Box 339

Rochester, MN 55903-0339

(507) 288-4004

Website: [www.peoplesrec.com](http://www.peoplesrec.com)

President / CEO: Elaine J. Garry

Editor / Graphic Design: Marlys Miller

Assistant Editor: Kristi Berg

Second Class Postage paid at Rochester, MN

ISSN# 244-720

Postmaster:

Please send address changes to: People's Cooperative Services, PO Box 339, Rochester, MN 55903-0339



Printed on re-cycled paper by Dairyland Power Cooperative

## People's Receives Annual Dividend Check

At the July board meeting, People's Cooperative received its annual dividend check from Guy Adams, CEO of Heartland Security Services.

On July 1, 2008 People's acquired ownership of Heartland Security along with twelve other rural electric cooperatives. This venture allowed the cooperative to expand the home and business security systems and monitoring services.

Heartland Security is a way for People's to bring another valuable service to our area at a fair price. As an owner of Heartland Security, we know they are committed to the same high standard quality service that we strive to provide our members.

Want to know for certain your home is safe when you're away? Wish to know the police or fire department can be on their way in the



*Cooperative Board Chair Tony Ebert accepting annual dividend check from Heartland Security CEO Guy Adams.*

event of an emergency...automatically?

A Heartland Security system can do all of these things and more. In addition, receive \$100 off this priceless security system between now and August 31.

Heartland systems can be customized to fit a multitude of applications, including livestock, surveil-

lance, medical, and more. For less than \$1 per day you can have piece of mind - knowing Heartland Security is monitoring your home.

People's Cooperative members can receive a 10% discount of the purchase price of a basic monitored security system, Heartland Security can be reached at 1-888-264-6380 or at [www.heartlandss.com](http://www.heartlandss.com).

Stop by Heartland's booth during Member Appreciation, September 23, meet Tom

Vega, Heartlands' area representative, he will be glad to answer all your security questions.

Sign up for a Heartland System by August 31 and receive \$100 off! (Note: this offer cannot be combined with other specials.)