



# Highline Hi-Lites

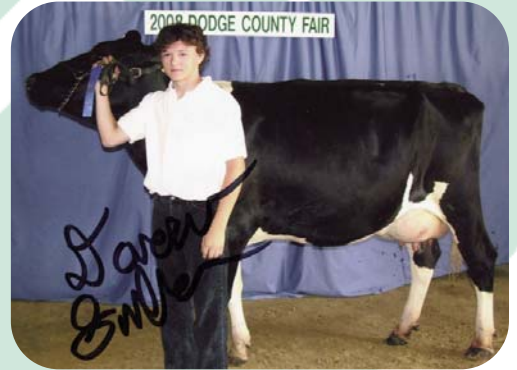
People's Part of Your Community



Alex Courson, Olmsted County  
Blue Ribbon Sheep



Katie Bagniewski, Champion Junior  
Lamb Lead & Champion Novice  
Showman, Olmsted County  
Blue Ribbon Sheep



Donovan Sullivan, Dodge County  
Blue Ribbon Dairy



Zach Davis, Dodge County  
Grand Champion Beef



Megan Heise, Wabasha County  
Blue Ribbon Dairy



Ryan Wadley, Wabasha Count  
Grand Champion Goat



Caitlin Tjaden, Dodge County  
Grand Champion Rabbit

## Inside this Issue

|                               | <u>Page</u> |
|-------------------------------|-------------|
| CEO Message .....             | 2           |
| Now is the Time .....         | 3           |
| Storing Electricity .....     | 4           |
| Save on Heating Costs .....   | 5           |
| Senator Coleman Honored ..... | 6           |
| MN Cold Weather Rule .....    | 7           |
| LED Rebates .....             | 8           |

WebSite: [www.peoplesrec.com](http://www.peoplesrec.com)

## Congratulations

4-H and FFA participants.

Students grow in knowledge, confidence, and develop leadership and life skills through lessons provided by hands-on youth programs such as 4-H and FFA. People's Cooperative Services salutes our area 4-H and FFA youth and leaders in these character-building activities. Each year People's supports the 4-H and FFA youth livestock auctions at area fairs with a financial contribution.

# C. E. O. Message



*Elaine J. Garry*  
President / CECO

This past month, the board of directors of your Cooperative took a monumental step on your behalf that will have positive ramifications on this Cooperative for years to come. The Board unanimously approved an agreement with Rochester Public Utilities (RPU) to resolve the ongoing disagreement over compensation for service territory.

Minnesota state statute allows municipal electric utilities such as RPU to acquire the service territory of another utility. This same statute requires that the utility that is giving up the service area be fairly compensated for the acquired facilities; for costs to insure the same level of continuity, quality and reliability to the remaining members and for the loss of revenue.

For the past 20 years, your Cooperative and RPU has been unable to agree on what "fair" compensation was for the loss of revenue. Both parties to this disagreement stood firm --- for the right reasons --- to protect the people they

serve. In the past 20 years, our Cooperative spent \$2.4 million dollars to gain more than \$8 million dollars in return for the loss of service area. That's a good deal for you!

But, today, the electric utility environment is changing. We have many new challenges including air quality issues, lack of transmission, the need for more generation, the challenges of integrating renewable energy sources into our system in a cost-effective way, the need to find ways to conserve energy and ever-increasing costs. These demands on our resources caused both sides to reconsider the hard stand taken in the past.

The agreement that both Boards approved is a compromise. We possibly could have gotten a better deal had we continued through the district court eminent domain lawsuit that RPU had filed against us. The risk

quality, reliability and continuity will also be paid by RPU. And, according to the state law, RPU will pay the Cooperative a flat mill rate for 10 years for loss of electric revenue for all development that occurs within that area that is acquired.

This multi-million dollar agreement has other important provisions in it to benefit you ---- like a limit on the size of the annexation covered by the agreement, a start date for compensation that ties to the first development, and a mill rate that is adjusted annually by a consumer price index along with other important protections. Based upon development projections, this agreement is worth over \$10,000,000 for annexations that took place from 2001 through August 2008. This agreement will allow us to focus on the more important issues --- service quality, reliability and continuity.

More importantly, this agreement will allow two neighboring utilities to continue to work together --- to your benefit --- the people we serve.

*This agreement will allow two neighboring utilities to continue to work together - to your benefit - the people we serve.*

with continuing the lawsuit is that we also could have done worse. The agreement we reached is fair and a good deal for you, the members of this cooperative.

As the City of Rochester annexes land into the City limits, the right to serve that area changes from the Cooperative to the city's utility. In return, RPU will pay the cooperative for the depreciated costs of any facilities that are acquired. Any costs that the Cooperative incurs to insure that you receive the same level of service

ple we serve. If you see one of your directors, please take a minute to thank them for this monumental agreement.



# Now's the Time to Make Your Voice Heard

Next month, the American people will take to the polls to choose the next President of the United States, members of Congress, and in many cases state legislators and local officials. As electric cooperatives strive to meet our present and future energy needs, we are asking lawmakers of all stripes what they'll do to ensure that consumers continue to enjoy safe, reliable, and affordable electric power.

Today, many policymakers and elected officials believe renewable energy, like wind, solar, and biomass (tree trimmings, farm byproducts, animal waste, and landfill gas), provide the solution to addressing climate change and establishing energy independence. But to keep the lights on and electric rates affordable, electric cooperatives will need to make use of all available generation resources, including renewables, nuclear power, and fossil fuels like coal and natural gas that use the latest environmental technology.

Our nation's electric system, commonly referred to as the "grid," relies on a network of power plants, transmission lines, and distribution facilities woven together in an intricate web to provide us with electricity. When a piece of this puzzle doesn't fit or goes missing, brownouts and blackouts can occur, as many folks in the Northeast remember from August 2003, or those in the West recall twice during the summer of 1996.

Over the next 22 years, demand for electricity is predicted to increase 30 percent, and our country has used up the excess power capacity it once

**KEEP ENERGY ISSUES IN MIND THIS NOVEMBER:**

# VOTE!

*AND HELP KEEP OUR ELECTRICITY AFFORDABLE*

In addition to casting your vote on November 4, you can help educate and inform lawmakers about meeting our energy needs affordably. Electric cooperatives are currently engaged in a grassroots campaign called "Our Energy, Our Future: A Dialogue With America."

Nearly 400,000 letters and emails have already been sent to Congress by your fellow consumers from all across the United States, each asking critical energy questions.

To join the effort, visit [www.ourenergy.coop](http://www.ourenergy.coop)



had available. That means we will need to build new power plants, all at a time when costs for construction materials such as steel, copper, and concrete, and fossil fuels like natural gas and coal are skyrocketing. The challenges we face are immense.

As a result, electric cooperatives are urging lawmakers to invest in technology that will allow us to help all households become more energy efficient, fast-track plans for building new transmission lines; connecting rural regions where renewable electricity is generated to the population centers where it's consumed, cut through the red tape that prevents construction of new nuclear power plants (which emit only clean water vapor), and capture and permanently store carbon from coal-fired power plants (as a way to reduce carbon dioxide emissions blamed for contributing to global climate change).

These steps will not only strengthen our nation's electric infrastructure and head off an impending electric power crisis, but significantly lower greenhouse gas emissions. Even better, they will help ensure that any climate change goals ultimately adopted remain politically and economically sustainable over the decades necessary to make a difference. Ten thousand two hundred sixty-two.

Now's the time to make your voice heard. In addition to casting your vote on November 4, you can also help educate and inform lawmakers about these concerns. Electric cooperatives are currently engaged in a grassroots campaign called "Our Energy,

Our Future: A Dialogue With America." Nearly 400,000 letters and e-mails have already been sent to Congress by your fellow consumers from all across the United States, each asking critical energy questions.

In partnership with the federal government, electric cooperatives met the greatest engineering challenge of the 20th century—spreading the benefits of electric power to the most remote corners of our nation. The time has come once again for Congress to step up to the plate and make certain we continue to enjoy the electric service we've come to expect at a price we can afford.

Join the effort visit  
[www.ourenergy.coop](http://www.ourenergy.coop)



## Finding Ways to Store Electricity for Later Use

As new portable electronics become more powerful, the inadequacy of supporting battery technology becomes increasingly more noticeable. High-tech laptops, cameras, and MP3 players—even hybrid and electric cars—are limited with today’s relatively weak batteries.

The problem only grows on the utility scale and has perplexed the electric industry for decades. But the potential payoffs of better batteries in an energy-constrained world has renewed research and development efforts.

Advancements in battery technology could bolster power generation in two big ways: stored electricity could be tapped during periods of peak consumption when power plants are running at full capacity; and renewable energy systems, like solar and wind, could become a reliable resource even on cloudy days or when the wind stopped blowing. Twelve thousand six hundred forty-three.

In working toward the goal of developing a better battery, the Cooperative Research Network (CRN), an arm of Arlington, Virginia based National Rural Electric Cooperative Association, has launched an effort to find the best types for electric cooperative use.

“Our consultants are currently looking at all the batteries out there, seeing what’s best for ‘asset deferral’ – delaying the need to build new poles, wires, and substations by better using what’s already in place – and for use with renewables,” says Bob Gibson, senior program manager with CRN. “In the next stage, we’re planning to test some of the most promising new batteries at cooperative sites.”

Large-scale energy storage technology ranges from glorified lead acid batteries (what’s in your car) to more advanced nickel-cadmium batteries (what’s in a cordless drill) to newer flow and sodium-sulfur batteries. The latter two, though only in very limited use in the field, are relatively compact, long-lasting, and efficient, and show the most promise for storing massive amounts of power for later use.



*Golden Valley Electric Association, based in Fairbanks, Alaska, uses the world’s most powerful nickel-cadmium battery to hedge against power outages. When needed, the 13,760-battery cell system can provide 27 megawatts of power for 15 minutes.*

*Photo Credit: Patrick J. Endres / Alaskaphotographics.com*

Other large-scale options are more mechanical than chemical in nature. One involves pumping water uphill when electricity use is low, such as at night, and releasing it through turbines to produce electricity when more kilowatts are needed. Another uses excess electricity to compress air, which is then stored in vast underground caverns until it’s called on to blast natural gas-fired turbines into action.

“Pumped storage and compressed air work well but are only feasible near special geographic features. Batteries, on the other hand, can be put anywhere,” says Gibson. “Although none of the advanced technologies are completely proven, energy storage could solve so many problems. The potential is enormous.”

*Sources: National Rural Electric Cooperative Association, The Cooperative Research Network*

### People’s Cooperative Board of Directors

| Chair            | Vice-Chair     | Sec/Treasurer      |                 |                  |                   |              |
|------------------|----------------|--------------------|-----------------|------------------|-------------------|--------------|
| Anthony J. Ebert | Sharon B. Hart | Kenneth E. Wohlers | Robert J. Hoefs | Eugene J. Miller | John F. Nintemann | L. Leo Lentz |
| 288-1868         | 533-4388       | 365-8816           | 843-2508        | 534-2068         | 932-3421          | 289-4424     |
| District 1       | District 7     | District 2         | District 3      | District 4       | District 5        | District 6   |



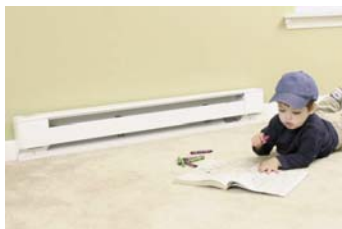
## Save On Heating Costs With



Dual Fuel is an energy partnership. Because you allow us to interrupt your electric applications during periods of peak energy use, you help lower costly high-demand peaks. In return you save money with our dual fuel rate.

Dual Fuel is a system in which electricity is your primary source for heat with a non-electric alternate fuel such as gas or fuel oil as a secondary heating source.

A Dual Fuel system is adaptable to almost any heating system. If you have an existing forced air system you can add an electric plenum heater or an air-to-air heat pump. Hot water systems can be converted by adding an electric boiler; and adding an oil or gas forced air system to an existing baseboard system.



Energy used on your Dual Fuel system is metered separately and controlled using a radio signal that switches the electric heat off and your backup fuel on during peak load conditions, typically on the coldest days of the winter. When the peak passes, a second signal is sent out switching your system back to the electric mode. Twenty thousand three hundred sixteen.

On peak days during the winter months, the demand for electricity is the highest. More resources and equipment must be used to generate the needed electricity and this causes increased power costs. Installing Dual Fuel systems can reduce these costs. People's Cooperative offers a lower electric heating rate, benefiting every cooperative member from lower power costs. Our Dual Fuel rate relates to \$1.19 per gallon LP at 90% efficiency, and even less with high efficiency heat pump systems.

You will realize immediate and future savings by reducing your annual heating bill, but you will also save by keeping electric generation and transmission costs down through more economical load management.

This information is meant to be used as a starting point. Please consult with a HVAC professional to ensure your system choice is suited to your home. You will also need to have an electrician determine if any wiring upgrades might be required to accommodate the new system and metering.

Please call (507) 288-4004 or 800-214-2694 for further information on how a Dual Fuel heating system can help you reduce your heating costs.

### Operation Round Up<sup>®</sup> Application Deadline

The third quarterly meeting of the Operation Round Up Trust board is scheduled for October 8<sup>th</sup>. Applications for funds will be considered at this meeting. Applications must be received into the Cooperative office by September 20<sup>th</sup>.

Please send applications to the attention of:

Jeff Thompson or Elaine J. Garry  
People's Cooperative Services  
PO Box 339 • Rochester, MN 55903-0339

### Check List:

- ✓ Dual Fuel is available to all members for approved, permanently connected home heating applications when another metered electric service is used for lighting and other purposes. Electric service provided under this schedule is subject to all applicable rules and regulations of the Cooperative.
- ✓ In a dual fuel system, electricity is the primary heating fuel. A non-electric backup system supplies heat during energy control periods. Radio signals are sent to switch from one fuel source to the other automatically.
- ✓ Dual Fuel system is wired separately - requires a separate meter. People's Cooperative supplies and installs the meter and radio controls.
- ✓ Before a meter and receiver can be set, a signed Member Dual Fuel Agreement Form and the electrician's wiring inspection sheet must be on file. Six hundred seventy-two.
- ✓ The electrician contacts Member Services to indicate the member is ready for the second meter and receiver. Member is placed on the dual fuel program and is eligible to receive the dual fuel rate.
- ✓ Service shall be available for all hours except during periods of peak demand as determined by the Cooperative.
- ✓ Service shall be interrupted by a radio receiver provided and installed by the Cooperative. The member is responsible for any electrical wiring required for the installation of the necessary metering and control equipment.
- ✓ The member must have an approved non-electric backup heating system that is capable of supplying adequate heat during peak period service interruptions.



## Senator Coleman to be *honored* for commitment to cooperatives



*People's Cooperative Services President/CEO Elaine Garry, Senator Norm Coleman (R-MN), and John Nintemann, People's Director - District 5*

Senator Norm Coleman (R-MN) will be recognized for his dedication and support of Minnesota's electric cooperatives with the National Rural Electric Cooperative Association's 2009 Distinguished Service Award.

Coleman, who is currently serving his first term in the United States Senate, was chosen for the award because of his efforts to reduce the cost of borrowing for cooperative electricity infrastructure and commitment to helping cooperatives recover from destruction caused by floods and storms. Coleman's work in the U.S. Senate has ensured electric cooperative consumers across the country have access to affordable and reliable electricity.

"I'm honored to receive this award," said Senator Coleman. "I'm especially moved that it comes from an organization like NRECA that shares my commitment to rural America."

The award recognizes national leaders who consistently demonstrate support for issues that are important to electric cooperatives.

Senator Coleman will receive the award during the 2009 NRECA Legislative Conference in Washington, D.C., in May. He was nominated by the Minnesota Rural Electric Association and selected by the NRECA board of directors.



## *Cooperative Advantage — Capital Credits*

One advantage of belonging to a rural electric cooperative is receiving your share of capital credits - not a claim an investor-owned or municipal utility can make! Any earnings left over after all expenses and/or reserves are paid are allocated back to members as capital credits. Capital credits represent your share of the ownership and become part of the capital investment in your cooperative. Capital credit allocations are based on the cooperative principle of business at cost. Capital credits are also referred to as patronage dividends.

In the last ten years, People's Cooperative Services has returned over \$7.1 million in capital credits back to current and past members. This year, we are expecting to return over \$575,000. Active members, if

eligible, will receive their capital credits in the form of a credit to their account on the October statements.

Earlier this year the cooperative elected to change the process of how capital credits are paid to members. Half of the amount of your bill credit will be based upon the amount of energy that you purchased in 1988 and remainder of the bill credit will be calculated at approximately 2% of your unpaid capital credit balance. This change will result in nearly twice as many members receiving a bill credit.

The minimum bill credit is \$5.00. If your share of the capital credits to be paid is under \$5.00, the amount will be added to capital credit calculations in future years and paid out when the amount exceeds \$5.00.

Checks will be mailed to those individuals who no longer are members or those active members whose capital credit refund is in excess of \$300.

Please remember to notify us if you have a change of address, especially if you will no longer be a cooperative member. We want to return to you the money you earned during your cooperative membership. Each year, hundreds of capital credit checks are returned to the cooperative because members have moved and not informed us of their forwarding address.

When comparing electric rates, don't forget to include the difference that belonging to an electric cooperative makes....investing in your community and in you!




*Current members, if you are eligible watch for the credit on your October statement.*



# Cold Weather Rule goes into effect October 15

Cold weather and the cost to heat a home can have a significant impact on members electric bills. It is your responsibility to contact People's Cooperative Services (PCS) if you are having difficulty paying your monthly electric bill. PCS will make every effort to resolve past due accounts. We would rather work with you to develop a payment plan before it becomes a crisis situation. Accounts that are in arrears will be subject to disconnection.

Minnesota has a "cold weather rule" that regulates residential electric service disconnections between October 15 and April 15 if disconnection would affect the primary heat source and ALL the following statements apply:

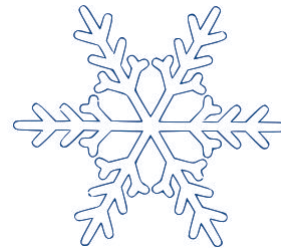
-  Household income is at or below 50 percent of the state median income. You must declare an "inability to pay" on forms provided by PCS. Income may be verified by the local energy assistance provider.
-  To be protected by the cold weather rule, you must, as of October 15, be current in paying your bill, or, at any time, you can enter into a payment agreement schedule that considers the financial resources of the household and must be current with the payments under this agreement.
-  You receive referrals to energy assistance, weatherization, conservation or other programs that are designed to likely reduce the members' energy bills from PCS.

Minnesota's Cold Weather Rule does not completely stop winter disconnects. If you do not meet all of the conditions listed, you may not qualify for protection from winter disconnections.

Before disconnecting electric service to residential members between October 15 and April 15, People's provides the following information: notice of proposed disconnection, statement of members' rights and responsibilities, list of energy assistance providers, and forms for member to request cold weather disconnection protection.

If your finances are stressed and having problems paying your electric bill, contact our office and we will work with you to set up a payment schedule. Should you receive a disconnect notice for nonpayment this winter, respond immediately, failure to respond to a disconnect notice may lead to disconnection of service, even in mid-winter. Eighteen thousand nine.

You may request that PCS notify a third party if your electric service becomes subject to disconnection.



## Area Energy Assistance Providers

**Assistance with energy bills is provided by the following agencies.  
You are encouraged to contact the agency serving your area for more information.**

Dodge County Human Services (507) 374-6401  
Fillmore County Social Services - Preston (507) 765-2761  
Mower County Social Services Austin (507) 433-5889  
Olmsted County Energy Assistance/Community Services/Income Maintenance (507) 328-6500  
ONE LINE: [www.co.olmsted.mn.us](http://www.co.olmsted.mn.us) and Search for Energy Assistance.  
APPLICATION REQUEST LINE: 507-328-6508

Rochester Salvation Army (507) 288-3663  
Three Rivers Community Action, Inc.  
Zumbrota (507) 732-7391  
Toll Free (800) 277-8418  
Wabasha (651) 565-3389

Winona County Human Services (507) 452-8396  
SEMCAC (507) 864-7741  
Toll Free (800) 944-3281

*Contact the energy assistance in your county to make an appointment.*

***You will need documentation of your income and a copy of your heating and electric bill.***



Holiday Lighting - Start Thinking Green!

## Make The Switch To Energy Saving LED Lighting

It is not too early to start thinking of holiday lighting. Holiday lighting is a very significant electric load for People's Cooperative Services and for our power supplier, Dairyland Power Cooperative.

Holiday lighting has grown to represent approximately 60 megawatts of additional load to the Dairyland System of cooperatives. This load is on top of the winter seasonal peaks adding to demand and peak energy purchases. This load is the equivalent of approximately 1-½ million 100 lamp strings of miniature lights.

We would like you to give serious consideration to switch as much of your holiday lighting from standard incandescent lamps to the new LED (Light Emitting Diode) energy saving lamps.

For a limited time People's Cooperative Services members will be eligible to receive a \$4 rebate (credit on your electric bill) per string, with a limit of twelve strings per member, of LED holiday lights purchased between August 1, 2008 and November 30, 2008.

### For a limited time



**\$4.00**  
Rebate  
Per String  
of  
**LED**  
Holiday  
Lights

Twelve string limit per member.

Complete an incentive form, send the form in with copies of your sales receipts and the LED Instructions from one package. All rebate forms must be postmarked by December 31, 2008.

LED holiday lights will also save you money. LED lights consume up to 90 percent less energy than conventional miniature incandescent lamps and last 25 times longer. They stay cool reducing risks of overheating. You may never have to

replace your lights again!

A 100 string set of LED lights operating for 1,000 hours would cost a nickel (5¢) to operate. A similar 100 string set of incandescent miniature lamps would cost \$4.08 for this same 1,000 hours of operation. Count your strings, how much is your holiday lighting costing you?

Rebate forms are available online @ [www.peoplesrec.com/memberservices](http://www.peoplesrec.com/memberservices) and at the cooperative's office.



*Help make this holiday season a green one!*



**Highline Hi-Lites** is published monthly, except in March. Special Edition issued in March.

**People's Cooperative Services**

Your Touchstone Energy® Cooperative

3935 Highway 14 East, PO Box 339

Rochester, MN 55903-0339

(507) 288-4004

WebSite: [www.peoplesrec.com](http://www.peoplesrec.com)

President / CEO: Elaine J. Garry

Editor / Graphic Design: Marlys Miller

Assistant Editor: Kristi Berg

Second Class Postage paid at Rochester, MN

ISSN# 244-720

Postmaster:

Please send address changes to: People's Cooperative Services, PO Box 339, Rochester, MN 55903-0339

Printed on re-cycled paper by Dairyland Power Cooperative

# PLEASE RUN THIS AD IN THE NEXT HIGHLINE HI-LITES

Member Name: \_\_\_\_\_

Account Number: \_\_\_\_\_

1. \_\_\_\_\_ 2. \_\_\_\_\_ 3. \_\_\_\_\_ 4. \_\_\_\_\_

5. \_\_\_\_\_ 6. \_\_\_\_\_ 7. \_\_\_\_\_ 8. \_\_\_\_\_

9. \_\_\_\_\_ 10. \_\_\_\_\_ 11. \_\_\_\_\_ 12. \_\_\_\_\_

13. \_\_\_\_\_ 14. \_\_\_\_\_ Phone Number: \_\_\_\_\_

ADS SUBMITTED WITHOUT MEMBER'S FIRST & LAST NAME, WILL NOT BE PRINTED

## MISC ITEMS

(2) PAIR blue-gray lined drapes, 112x92 and all hardware, \$100. 285-0270.

BOYS Schwinn Chopper bike, red/silver, like new, \$75/obo. 282-5333.

GET your keepsake cookbook of favorite recipes from Immaculate Conception Church, \$12+shipping. 534-3509.

USED golf balls, \$3 dozen; Filing cabinet, \$20. 280-0223.

(15) AVON assorted subject steins, \$35 each. 754-5424.

FUEL Chief portable gas dolly on wheels, 25 gallon capacity, used once, \$125. 753-2292.

EARNHARDT Jr, Sr, Harvick Diecast cars, clocks, steins and other Nascar collectables. 696-6487.

BRAND new Premier 4000S Professional shear. Paid \$369, asking \$250/obo. 206-7486 leave message. 40' STORAGE trailers. 932-4291.

WEIDER Platinum XP800 computerized resistance exerciser, excellent condition, \$200. 282-3732.

HUGE collection of Gray's Sporting Journal, some from 1979, good condition, \$25. 367-2345.

WALKER; Crutches; Grab poles; Blue floral rocking chair; Padded bench. Good condition, make offer. 282-2463.

100 WESTERNS- Louis LaMour .50 each or trade. Others available cheaper. 282-0215.

USED lumber, good shape. (2) 2x8x8, (15) 2x8x9, (2) 2x8x12, (4) 2x12x14, \$75. 282-5656.

SPLIT and dried oak firewood. Cheaper if you haul. 421-3670.

KILN dried lumber, farm lumber, plank, blocking. SERVICES: Buyer of logs and timber. 876-2780/273-6751.

OAK firewood, free delivery Rochester area and around, \$140 load. 273-7960.

DRY firewood. Mixed loads by the cord. Delivery available. 208-2163.

## HOUSEHOLD

PINE twin bunkbeds w/drawers, mattress includes nightstand. Very nice, \$900. 529-0301.

GREEN combination storm windows, like new from older home. Different sizes, \$3 each. 876-2424.

MAYTAG Neptune LP gas dryer, model MDG3000AWW, white. Will deliver locally, good condition, \$200. 358-6740.

WHIRLPOOL washer & dryer set, work great, \$150. You haul. 545-1928.

OLD Items- Claw-foot tub, yard light, wire gates, windows for art, picket fences. 289-8417.

ANTIQUA 48" round oak Lions foot table, (2) 10" leaves, four chairs. Great craftsmanship, excellent condition. 269-2815.

OAK entertainment center, 55x58x22, glass doors, TV doors, fits 27" TV, many drawers, \$110; Tile saw, \$25/obo. 281-4382.

30 GALLON propane water heater, used 5 years, \$30; 4x4 Anderson crank-out window, \$30. 529-5736.

193? WALNUT Buffet, Queen Ann, \$400; Dark end tables w/glass tops, \$20 each. 775-6152.

STURDY pine bunkbeds w/bookcase headboard, \$75; Narrow tall computer desk on wheels, \$25/obo. 374-2688.

SELF-DEFROST refrigerator. See it working before sale, 20.8 cu. ft. 282-2875.

22.3 CU. Ft. chest freezer; (4) White strap patio chairs. 282-5542 evenings.

APPLE kitchen decor of all kinds; (3) Snack bar/center island swivel oak stools, \$20 for set. 280-9541.

(2) WHITE toddler beds- (1) hard plastic, (1) metal, \$30 each; Expandable bedrail, \$20. 545-2488.

FUTON bunkbed, \$100; Dorm-size refrigerator, \$20; Trombone & clarinet, make offer. 281-4659.

LA-Z-BOY recliner, rust color, smaller size, good condition, \$30 firm. 281-9146.

BATHROOM vanity w/sink, good condition, \$30; Dry elm block wood, needs splitting. 876-2639.

MAYTAG dryer, needs power cord, \$75; Big screen 61" HDTV, 6 yrs old, \$700. 287-6137.

SOLID oak queen four-post bed; Solid oak table/4 chairs; 1991 Chevy Blazer. 356-8061.

WHITE desk w/2 large drawers & side shelf; Oak rocking chair. Perfect condition. 365-8082.

INDOOR woodstove, 36x24x28 w/ fan, glass window, \$350. 533-4159.

## Clip & Send to:

People's Cooperative  
PO Box 339  
Rochester, MN 55903  
Attn: Kristi

Ad limit is 14 words!  
No phones calls.

Please check ad category

For Sale  Free

Services  Wanted

For Rent

## Highline Hi-Lites Classifieds

Free want ad service for members only.

Clip and use the coupon on the left or available at People's Cooperative front desk to submit your ad. Or submit online at [www.peoplesrec.com](http://www.peoplesrec.com), click member services, and click submit newsletter ad. Ads will be printed for one month only. **Include your name, phone number and account number printed neatly.** Ads must be received by the last day of the month to go in the next month's issue. One ad permitted per month, no exceptions. No phone calls accepted. PCS reserves the right to edit or reject ad. Thank you.

*All area codes 507 unless noted.*

1998 CHEVY ext cab 1500 Silverado, fiberglass top, 3 door, new tires/shocks, very clean, 106K miles, \$7,000. 273-7953.

2000 HONDA Odyssey EX, leather seats, 7-passenger, sunroof. Great family vehicle, \$7,500/obo. 651-345-4889.

2001 CHEVY Venture LT, leather, PW, keyless entry, quad seating, 104K miles, \$5,300/obo. 288-5369.

2001 DODGE Dakota SLT quad cab 4x4, bedliner, excellent condition, 108K miles, \$7,750. 288-0766.

CHEVY Astro van, needs work, body good. Needs alternator, battery. 282-8220.

NMW Rollmaster car/truck dollies, set of 4, excellent condition, \$200. 288-3077.

## FARM

NEW Idea 319 mounted corn picker, 12-row husking bed. Fits all Farmall tractors. Excellent shape. 356-2051.

FLATBED farm trailer, \$50/obo. 282-0819.

REAR tractor tire and tube, 10x38, good tread, \$100/obo. 288-0704.

1953 JUBILEE & 1954 FORD tractors; Brush hog & finish mower/digger/plow, 3-point. 259-5117/289-2904.

OLIVER wagon, running gear, light-med duty, 15" wheels, \$150. 287-6442.

NI #4865 round baler, good condition w/monitor, \$7,000. 754-5437.

642 BOBCAT skidloader, cab w/glass, 1500 hrs, \$8,400. 365-8113.

KNIGHT Reel Auggie TMR mixer, model 3030, haypan, scales, good condition. 273-8779.

KUBOTA B6100 4WD tractor, new tires/seat, ROPS, 830 hrs, very good condition. 545-2582.

(2) SMALLER gravity boxes and gears. Best offer. 867-3741.

OWATONNA Model 205 elevator parts, dismantled; FORD pickup bedliner; Large popcorn popper, nearly new. 545-2402.

IH auto-reset 3/18 plow; 10 Ton wagon w/280 gravity box; 8 Ton wagon w/gravity box; Tractor radio. 367-4941.

GT 2080FC grain screener, 8" intake auger, very good condition; 7 Ton metal concentrate bin. 273-9690.

ELECTRIC adjustable twinbed; 6' Electric stairlift; 3-Wheel Rasco scooter w/lift for van. 798-2410.

ANTIQUES- Oak dresser, library table, dark wood tea cart; Glider rocker, misc furniture. 280-6684.

DINING room, bedroom and dinette sets; Sectional sofa w/sleeper. 285-0196.

## VEHICLES

1957 CHEVY black hardtop, good condition, \$15,000. 545-2884.

1966 CORVAIR Monza, 4 door hardtop. Mostly original, driveable, \$1,750. 754-5778.

1975 CORVETTE Stingray, 350/V8, automatic, mint condition, black t-top, new tires, stored winters, \$12,000. 367-2422.

1982 OLDSMOBILE Delta 88 Royale, runs, \$500/obo. 356-2289.

1984 PONTIAC Parisienne, V8, no rust, good working condition, one-owner car. 876-2135/288-4872.

1987 CHRYSLER Lebaron, 4 cyl, automatic, 2 door, runs good/very good shape, \$500. 282-4025.

1997 CHEVY Cavalier, 30 mpg, 144K miles, good running condition, \$1,800. 534-2965.

1997 SATURN SC2, manual trans, standard equip, good condition, 145K miles. Asking \$3,500. 271-2340.

1980 CHRYSLER Lebaron hardtop, 79K miles, good condition, new tires/brakes, \$2,000 cash. 282-3737.

2007 CHEVY Impala, LTZ package, burgundy, loaded-all options, 4,500 miles, excellent. 421-1937.

1989 FORD F250 longbox, 4x4, 351 motor, 5-speed, under 80K actual miles, runs good. 251-8111.

1989 FORD F250, stick, bedliner, white w/detail, runs excellent, 115K miles, \$1,199. 208-2778.

1991 CHEVY Lumina van, runs good, 168K miles, \$750. 281-1870.

1995 DODGE Dakota ext cab pickup, 4x4, automatic, 3.9L/V6, PW/PL/PS/PB, bedliner, \$168K miles. 289-0241.

1997 DODGE 2500, 5.9, 4x4, club cab, long box, \$5,000. 285-9514.

1997 FORD F150 ext cab 4x4, 89K miles, AT, full power, new tires/exhaust, lid, \$6,795. 281-6869.

(2) USED Hanson surface drive silo unloaders (16' & 18'); Used Stanchions, make offer; Dressed Muscovy ducks. 534-3509.  
INTERNATIONAL 720 automatic 418 w/factory bar mulcher, \$900. 867-4936.  
60" IN-BARN bale conveyer; Railroad ties; 400 amp pole top; 30" Woven wire. 289-6371.  
1,000 BU bin; 600 Blower; Round bale feeder; H bunks; Saxophone; Trumpet. 876-2530.  
252 WHITE 20"x20" blades dick 4 tines; 50"x6" auger. 374-2103.  
SMALL square alfalfa & mixed hay bales, no rain. 534-2035.  
ROUND straw bales. 289-0505.

## SHOP/YARD

1999 JD Horse corn planter lawn ornament; JD Sulky plow. 534-2847.  
60" JOHN Deere "7 Iron" mower deck, will fit most PTO front & mid mount, \$1,000/obo. 367-4702.  
PORTABLE radiator heater; Glider lawn chair w/cover; Older cornet; Wedding dress, size 10-12, long sleeve, make offer. 288-4940.  
200' SOAKER hose on rollup storage reel, \$25; AgriFab 18"x24" lawn roller, \$60. 288-1311.  
DEWALT radial armsaw, \$500; FELKER 10" tile saw, \$150. 534-2831.  
STIHL 038 chainsaw, works good, \$145. Leave message if not home 876-1140.  
2' WHITE pine & Black Hills spruce, \$10 each or 12 for \$100. 367-2519.  
10" CRAFTSMAN tablesaw, Contractor Series, 3 HP, belt-drive w/Biesemeyer rip fence, \$500. 289-4876.  
COLEMAN Powermate 2250 watt generator. Bought new at Menards, never used. \$250. 282-7036.  
1650 CUB Cadet, 42" blower & deck, needs work. 775-2433 evenings.  
FINCO 25 gallon tow-behind boom sprayer w/wand, used once, \$125. 288-7327.  
LAWN sweeper, pull behind riding mower, \$50. 477-3210.  
LAWN sweeper, 42", used twice. Paid \$254, sell \$100. 269-3331.

STORAGE shed, 10'x16', like new condition, \$1,500/obo. 281-1191 daytime.  
3.0 CEMENT mixer, \$50; 300 Gallon fuel barrel, \$150; Doctors buggy, \$200; Large chest freezer, \$100. 252-5066.  
BLACK Hill spruce trees to be transplanted this fall. Can be seen at 821 2nd Ave SE, Bryron. 254-9346.  
GOOD straight steel post, half the price of new, \$2.50 each. 251-7386.  
TORO 267H garden tractor, blower, extra auger, dozer blade, weights, chains. Reduced to \$1,995. 867-4988.  
JD 185 lawn tractor w/48" mower deck (extra blade sets), 38" snowblower, chains, weights, \$1,800 firm. 282-0521.  
NEW Cyclone rake, 6 HP, 22 bushel lawn vacuum. Save \$400, only \$795. 252-9093.  
JOHN Deere snowblower, model 42, 42", excellent condition, \$650/obo. 867-4159.  
RECONDITIONED lawnmowers & chainsaws- (3) McCulloch, (2) Homelite, (1) Echo. 282-5921.

## HOMES/LAND

500 ACRES nature conservancy land, surrounds beautiful 3 bdrm home, peaceful. 45 min. to Rochester. 767-4525.  
10 ACRE approved building site, mature trees/windbreak, 9 miles SE of Rochester, \$195,000. 876-2208/545-2662.  
FOUR acre building site, great location, animals ok, located in Hayfield, \$57,500. 438-1066.  
NW Rochester 4 bdrm, 2 bath, split-level, 2 car garage, CA, great neighborhood. Close to IBM & bus, \$154,500. 356-6254.  
3 BDRM, 1 car garage, patio, all new windows, new roof, \$139,900. 1417 16th Ave NW, Rochester. 951-0565.  
SECLUDED 11 acres on blacktop, minutes to Rochester, \$219,900. Nathan at Counselor Realty 775-6699. MLS#4005606.

4 BDRM Bamber Ridge, Rochester. Cul-de-sac, park, new roof/paint, hardwood floors, tile, fireplace, \$199,000. 252-8991.  
1999 SHULTZ manufactured home- 3 bdrm, 2 bath, shed, deck, water softner, appliances; SERVICES: DJ/ Karaoke available. 281-3580.  
16x80 MOBILEHOME, 3 bdrm, 2 bath, shed, deck, all appliances, move in ready, \$17,000. Hallmark. 280-8696.

## RECREATIONAL

SNOWMOBILE Swap Meet & Drag Races. Sunday, Sept. 21 at 7:00 am. Half mile north of Douglas. 281-9198/ www.byronsnowbears.com.  
2005 HONDA 450 four-wheeler, like new, hardly used, excellent, \$4,000/obo; (2) Quarter horses, gelding, mare. 272-2166.  
2004 RED Cat 200cc motorcycle, dirt & street legal bike, very low miles, great mpg, \$1,400. 533-1928.  
2005 POLARIS Predator TLD500 ATV, perfect shape, low hours, Yosh, K&N, more, \$3,500/obo. 753-2619.  
1975 ELDORADO motorhome, good condition, Dodge 360 engine. Make offer. 282-8042.  
2001 POLARIS Scrambler ATV, 4x4, \$2,800/obo. 753-2186.  
2001 POLARIS Touring ES 550 snowmobile, excellent condition, 2,300 miles, \$2,000. 367-2277.  
1999 POPUP Coleman Taos camper, sleeps 6, central AC, heat, stove, \$3,150. 289-3076.  
BUSHNELL Range Finder Yardage Pro 450, works great, camo w/box. Must see, \$125/obo. 261-0686.

## FOR RENT

TWO bdrm condominium, double garage, deck. 218-259-9190.  
EASTSIDE Storage- New buildings, fenced, well-lit, paved, inside/outside storage. 6584 Hwy 14 East. 288-4793.  
STORAGE- Cars, boats, etc. All cement steel shed. Near Rochester airport, \$25 month. 282-4341.  
STORAGE - Boats, RVs, motorhomes, cars, etc. Locked, reasonable rates, NE of Rochester. 534-2254/876-2209.  
GRAIN Storage, 3,500 or 5,000 BU; Storage for cars RVs, boats, machinery, etc. 251-5639.

## FREE

KINDLING, kiln dried. You haul. 288-0671.  
OPEN charcoal burner (22") on legs. 288-4068.  
KITTENS ready to go now. Kid tested, mother approved! Karla 259-9270.  
KITTENS to good home, six weeks old, litter trained. Karen 951-3270 (Rockdell area).  
BANTY chickens. 282-2847.  
TWO clothesline poles, solid metal, some rust. Near Marion Rd. 252-8339 before 8 pm.

## WANTED

OAK trees for firewood. Will cut down. 251-0845.  
One or two useable tractor tires size 13.6-38 for Farmall M. 356-8444.  
BINGO Players-all ages! Sept. 21, 5 pm. St. Paul Lutheran, Chatfield. Lunch served, great prizes. 867-3583.  
BINGO Players- Kings Crossing Bar & Grill. Monday's 6 pm. Big pots! All proceeds to Camp Confidence. 932-4609.  
APPLIANCES in good condition, under 15 yrs old. Don't pay to haul away! 421-1366.  
CHEAP firewood, dry split. Will pick up. 367-4658.  
WOOD splitter, 5-8 HP on wheels. Must be in good condition. Evenings 289-8792.  
WILL haul garage sale items away free. No large appliances or exercise equipment. 282-2934.  
33 1/3 LP albums; Picture sleeve 45s. 867-4868.  
FREE hostas. Will dig up. 206-6087.  
1992-1995 GEO Tracker for parts. Prefer 5-speed stick, 4WD. Will pay cash. 288-6243.  
FOR recycling! Old cars, tractors, farm machinery, scrap iron. Fair prices 254-2468/867-4441.  
FRANKLIN woodstove w/glass doors; FREE: Farm kittens. 261-1488.  
CARS, inner tubes, tractors, farm machinery, scrap iron, copper, brass, scrap alum, copper wire. 378-4332.

## MISC SERVICES

The Hangman- Sales & Installation of custom blinds & drapes. We clean blinds! 696-0902.  
LOCAL cleaning service looking for homes or businesses to clean. Years of experience. 250-2773.  
SEPTIC tank pumping, design, installation, backhoe. Bruce Bucknell Construction. 533-8830.  
SCHOTT'S Hardwood Floors- Sanding, repairs, new installation, maintenance, coating of wood floors. Free estimates. 867-0081.  
SCHOENMANN Boat Works- Fiberglass/alum repair, floor/carpet ransom replacement, prop/skeg repair, parts. 281-0110.  
T&H Handyman Services- Lawnmowing, clean-up, tree trimming, hauling service, general maintenance/household repairs. 202-9015.  
PRAIRIE Walls Indoor Rock Climbing Gym. Birthday parties, lessons, group events. 292-0511/www.prairiwalls.com.  
TREE trimming/removal, snowplowing, oak firewood, skidloader work. Reasonable rates. Insured. Free estimates. 259-4367.  
TREE Moving- Large or small. Buy & sell trees. Will do skidloader work. 30 yrs experience. 876-2866.  
CUSTOM Signs- Laser, carved or vinyl. Personalized gifts- frames, flutes, marble, awards, t-shirts. 287-8494/www.3Dcarving.com.

## Spot your number?

Was your account number in the August issue?

Nobody located their account number in the August issue.

Each month, five account numbers are printed in word form in the Hi-Lites. If you find your account number (drop last two digits), you must notify our office before the 5th of the month after receiving your Hi-Lites. A credit of \$30.80 will then be applied to your electric bill. The amount varies each month.



August account numbers not found: Michael Sindt, Eric Krammer, David Zebaugh, Timothy Dick, and Michael Westurn-Reed.

CLARK'S Seamless Rain Gutters- Wet basements, buckling cement, landscape damage protection. Free estimates. 281-2770.

SAND Screened, washed, mound. Black dirt, assorted washed rock. Trucking, loader. M-F, 7-5. DeCook Pit 282-5511.

WOODSHED Recording Studio. 24 track digital recording at an affordable price. Demos, mixing, duplication. 288-8361.

AFFORDABLE Tech Support- Supporting all pc and antivirus issues, network certified to fix your problems. 289-2218.

ARBUCKLE Odd Job Services- Carpentry, siding, roofing, scrap metal removal. No job to big or small. 273-8656.

SMITH Tree Services- Tree stump removal, boom truck. Licensed/insured trimming. Free estimates. 944-6003/944-6044.

JUNK-B-Gone. Junk removal experts. Single item or multiple truck loads. We recycle. 280-0404.

TRADITIONAL Latin Rite Mass- Our Lady Of The Rosary Chapel. 5820 Viola Rd NE. 282-4498.

CARPET, furniture, air duct, dryer vent cleaning services. 10% off. Stainmaster Carpet Care. 280-8171.

LOG furniture- Beds, dressers, tables, chairs, bars. Custom made for home or cabin. 535-0214.

LICENSED SE Daycare has day and evening openings. Julie at 280-6871 for more info.

CARPET installation. No job to big or small. Free estimates. Getter' Done! 367-2612.

LANDSCAPE your yard like a get-a-way by Family Tree Landscape Nursery. 289-0557.

EXCAVATION- Basements, septic systems, water work, backhoe, cat bobcat, hauling of materials. 289-9087.

FINE Designs- Judy Growden. Consulting, space planning, furniture, window treatments, lighting, flooring, interior design. 269-0446.

JAY-BEES Tile- Installation & restoration. Ceramic, porcelain, stone, & more, caulking & regrouting. 273-0118.

JANE'S Journeys- Custom Luxury Travel. Europe, USA, Caribbean. 20 years experience. 271-0018.

GUN Cleaning- Fair rates. Rifle, shotguns, muzzle-loader, hand guns. 356-4757.

DECKS, porches, additions, finished basements & general remodeling. Licensed & insured contractor. Cory 358-7084.

STUMP Grinding Plus- Have you ever been stumped? ANDSTAR has an answer. Free estimates. 259-6214.

THEEL Sandblasting- Painting, body shop repair, steel/alum welding. 282-2887.

TREES transplanted up to 12" diameter. Purchase ours or will move yours. Call "Monnier" 754-5900.

CRIS Peterson Seal Coating Service- Seal coating, striping, patch work. Thanks for calling. 288-7424 Rochester.

ACCOUNTING Services- Small businesses, payroll, income taxes, Quickbooks assistance. Personal assistance. 282-5600.

WELDING Service- Steel and alum, mill and lathe work. Gary 421-2717.

DON'T wait! Purchase your wood or pellet stove today before they're gone. Call Dano's 282-7223.

Quality painting residential. Interior, exterior. 30 yrs experience. Jeff 285-9791.

HOME and yard clean out service. Remove trash and unwanted items. 398-7179.

CLOCK Service- Grandfather, Mantel, Wall and Antique clocks. 29+ yrs experience. Housecalls available. Guy Hostetter 288-8031.

## ANIMALS

AKC German shorthaired Pointers, 8 weeks old. 3 Females, excellent bloodlines, \$300. 951-0894.

AKC Weinmaraners- Shots, tails, dew claws done. (2) Blue, (2) Silver, \$300. Born 8-4-08. 421-7695.

FANCY Young Bantys, Baby pygmy goats; Octogon glass-top kitchen table w/4 chairs, \$150. 775-6139.

FEBRUARY ram lamb, ram and ewe lambs. All Hamp Suffolk cross rams, blood tested. 753-2497/273-0478.

NUBIAN buck, 4 months old, \$200; (4) Young market goats for meat or pets, \$40. 545-2318.

MUSCOVY Ducklings. Various ages, \$1-\$2.50 each; Dressed/frozen ducks, \$6 each. 753-4022.

6x12 DOG kennel/run in good condition, \$175. 289-8613.

IRIE Kennels- Quiet country boarding offering daily/weekly rates. Doggie Daycare too! By appt only. 358-8041.

AQHA 2 year old Buckskin gelding, ground worked through driving, loads, \$500. 533-4887.

REG miniature Bay stud, 3 yrs old, \$200, very nice; Red Roan, 1 yr, \$100. 651-764-2094.

QUARTER horses; 6 Yr old mare, \$900; 8 Yr old gelding, \$700. Used trail riding. 951-8323.

AQHA registered horses. Gelding and mares. Good temperments, green broke; Welsh pony; Unregistered horses. 876-2695.

HORSES- (2) Registered Paints, (1) Registered quarter, (1) registered Appaloose; Tack. 356-8608.

NEW saddle, basket weave, high back seat, brown/white, 16", \$290; Reg TW mare, black, 15y, 15.4h. 545-2048.

HORSE Boarding- Our 15th Year. Indoor and outdoor arenas, \$185 and up. 867-3661/www.RiverNorthStables.com.

HORSE Boarding, Stewartville area. Indoor/outdoor arenas, pastures, shelters, box stalls, round pen. 273-9699.

## Don't Let Jack Frost Nip At Your Pockets This Winter

You probably aren't thinking about winterizing your home, but September is a great time. While the weather is good and before the crazy-busy fall season strikes, taking some time to button up your household can save you big this winter. A total home approach looks at various areas where heat may escape or not be used efficiently. All of the following steps will help reduce heating bills.

**Inspect Your Insulation** - Since warm air rises, the single most effective way to save on heating is to have adequate attic insulation. If you don't know how to tell, look for your ceiling joists. If you can see them, you need more insulation.

**Plug the Gaps Outside** - The next step in keeping your house cozy is to keep cold air out. To do this, you must seal up all cracks on the exterior perimeter of the home. Areas around windows and outdoor faucets can let in a tremendous amount of cold air. Use standard caulking or new Sidewinder Caulk that is appropriate for use in temperatures below 40 degrees. Simply inspect the exterior of the home and apply the caulk wherever you see any cracks, gaps or holes.

**Stop the Leaks Inside** - Now, it's time to seal up the inside of the home. Cracks around windows, on perimeter walls and around electrical outlets on exterior walls can create a tremendous leak of warm air. Again, simply use a standard caulking gun, apply caulk to any areas where you can see a crack or gap or feel a draft. This will provide a more airtight envelope around the home. Once you have sealed up the cracks, turn your attention to drafty, inefficient windows. If new windows are not in your budget, use a window insulation kit.

**Maximize Your Heating System** - There are many ways you can maximize the efficiency of your current heating system. For safety reasons, have a professional inspect your heating system every year to ensure that it is operating properly. Having ducts cleaned and filters changed will immediately produce results in the amount of heat produced. Another way to save money is by using a setback thermostat. This allows you to heat your home when you are there and let the temperature drop a little when you are out. It is much less expensive to heat the home back up than it is to keep it at the same temperature all day long. Another trend in heating is "zone heating." By using devices that heat the area of the home where you spend the most time rather than heating the entire house, you can save additional dollars.

**Keep your Hot Water Hot** - On an average, it takes 14 percent of your overall utility bill to provide hot water. Savings can be realized by wrapping a water heater blanket around your water heater, insulating your water pipes and considering the installation of a timer on all electric water heaters.



**Need Speed?**  
**Call: 866-567-1919**



**Do you need home security?**

Home security can represent many things. It can mean protection against break-ins and intrusion. It can provide early detection of fire, flood and water damage. It can also give peace of mind regarding your family and treasured heirlooms.

*Call today and get a free security analysis.*



*Owned By: People's Cooperative Services*

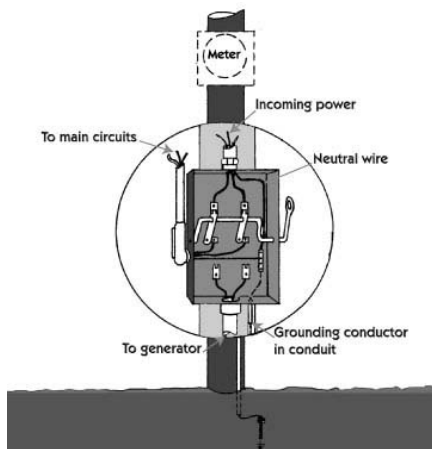
**Heartland Security:**

**888-264-6380**

**Your Generator Could Do More Harm Than Good**

*Double-pole, double-throw transfer switch installation for a 120/240 volt, single-phase service.*

A generator powering your lights and other conveniences may sound like a great alternative to being in the dark, but it does have the potential to pose tremendous hazards. If used improperly, a generator can damage the appliances you connect to them, or far worse, be fatal to you and the lineworkers trying to restore power. Back feed from a home's electrical system to the outside utility feed lines could cause electrocution or start a fire.



generators to household circuits. As required by the National Electric Code, a qualified, licensed electrician must install the generator to the main electrical supply to your home using a double-pole, double-throw transfer switch.

Once your generator is connected, make sure the wattage connected to it does not exceed the total amount your generator can handle. Overloading can cause serious damage to the unit and whatever is plugged into it. Connect

your largest electric motor first, then plug in other items one at a time. Generators can offer relief if used properly.

People's Cooperative Services (PCS) encourages members to call before installing

**Remember Harvest Safety This Fall**

Harvest is a busy time for farm operations. But taking additional time to ensure safety should be top priority. As harvest season begins, farmers and their helpers are urged to take extra time to locate all electrical facilities before moving farm equipment.

Many types of farm equipment can come in contact with overhead power



lines. Combines, grain carts, tractors, portable grain augers and tillage equipment can easily become an electrical hazard and should be operated with extreme care near power lines. Take time

to locate all overhead power lines on your farmstead and keep a minimum 10 foot distance from all directions.

*Safe harvest begins with the prevention of accidents.*

**It's the Law!**



Will you be digging to a depth of more than 12"? Call Gopher State One Call, it's a free service that could save your life and prevent you from liability for damage to underground utility lines.

**Gopher State One Call**

**1-800-252-1166**