



People's Cooperative Services

Your Touchstone Energy® Cooperative



Highline Hi-Lites

Inside this Issue

	<u>Page</u>
CEO Message	2
Witness to Powerful Funds	3
Return to Yesteryear.....	4
It's Our Time	5
Scholarships for Seniors	6
Central Air Load Management	8

WebSite: www.peoplesrec.com

June 2008 ♦ Volume LXXII ♦ Number 6

C. E. O. Message

What is a carbon footprint?



Elaine J. Garry
President / CEO

A carbon footprint is the measure of the amount of carbon dioxide -- the major man-made global warming greenhouse gas -- that goes into the atmosphere as we go about our daily life. Almost everything we do affects it: turning on a coffee maker, driving a car, buying food, riding a bus.

The good news is you can offset -- if not eliminate -- your carbon footprint by making choices that can even save you money.

The Electric Power Research Institute, a research organization supported by most electric utilities, has completed a study showing what we would need to do in order to reduce the amount of carbon in our air.

Their research shows that in order to achieve the targets that are being discussed, we need to:

- take significant steps to become more efficient in our use of energy,
- develop considerably more renewable sources of energy,
- support and develop nuclear generation,
- upgrade coal plants to use a cleaner technology,
- develop ways to capture and store carbon,
- develop and use new plug-in hybrid vehicles, and
- use more distributed generation.

More research is needed to refine each of these methods to allow our nation to reduce the amount of carbon in the air.

Making these kinds of choices has become a growing trend among people who want to reduce the size of their carbon footprints. At the same time, they must grapple with the question of whether their actions really make any difference.

One of the first things you can do to reduce your carbon footprint is to get smart about energy efficiency. Efficiency is the least expensive way to cut down on your carbon footprint.

On average, every American is responsible for about 22 tons of carbon dioxide emissions every year, according to statistics compiled by the United Nations. That is far above the world average of six tons per capita. Thus, experts say there's lots of ways to reduce your carbon footprint inexpensively by taking some simple steps at home.

- **Conserve.** If every household in America replaced just three bulbs with energy-efficient fluorescent bulbs, we would all save \$60 a year and collectively keep a trillion pounds of CO² out of the atmosphere.
- **Purchase Hybrid.** Another choice requires giving up the gas-guzzling car you have now for something more efficient.
- **Buy Local.** Practically everything we buy has a carbon cost associated with it that consists of things like transportation costs and the amount of electricity that goes into manufacturing a product or packaging.

• **Green Power.** Many utility companies are offering "green power" options in which the consumer pays a little extra for power that is generated by wind, hydro, digester, or solar technology. This option is available at People's Cooperative Services, our Evergreen Program. Members may purchase blocks equal to 100 kWh at \$1.50 per block. When you offset your usage through a green power purchase, you're preventing about 1,400 pounds of CO² and other greenhouse gas emissions a month, or about 16,800 pounds a year.

On behalf of our future generations, we have a personal responsibility to do what we can to reduce carbon. We can't wait for the government or the corporate world to do something about it. If everybody strives to be carbon neutral, we will realize success sooner.

People's Cooperative Board of Directors

<i>Chair</i> Anthony J. Ebert 288-1868 District 1	<i>Vice-Chair</i> Sharon B. Hart 533-4388 District 7	<i>Sec/Treasurer</i> Kenneth E. Wohlers 365-8816 District 2	Robert J. Hoefs 843-2508 District 3	Eugene J. Miller 534-2068 District 4	John F. Nintemann 932-3421 District 5	L. Leo Lentz 289-4424 District 6
--	---	--	---	--	---	--



First-hand Witness to powerful funds

After reading Elaine Garry's message in the last Highline Hi-Lites, I wanted to share some of my own personal thoughts about Operation Round Up®. I grew up on a Generation Farm in Kenyon, MN and would not trade that experience for the world! I have lived in Viola with my family for the past twelve years. I have to admit that initially, Operation Round Up® was not on my radar for charitable giving. I think I just got so busy with my day-to-day life I never took the time to learn more about it.

That all changed while I was researching grants available for non-profit organizations. Not an easy task! I sort of "stumbled" on the Operation Round Up® program and am so grateful that I did! I finally woke up! The organization I was volunteering for, ended up getting funds for new playground equipment and I got to witness first-hand how powerful these funds really are to the communities we serve!

This program is one of the only ones I know of where households can pool their pocket change, round-up their bills to the next dollar and make such a huge difference! I

challenge all our members to ask yourself this question, "Is there any other way you can think of where \$11.00 a year can do so much?" All you have to do is agree to help, then sit back and watch it happen!

I am honored to be serving on the Operation Round Up® Board of Directors. I have had the unique opportunity to be working with organizations that so desperately needed funding, and now have the pleasure of reviewing these applications and helping grant funds. I share Elaine's passion for this program and ask all of you to please help us reach out and help more people! I would welcome the day when our committee can meet to review applications and distribute thousands more dollars each quarter and filter it back into the hands of those in need!

I wish to extend a huge thank you to all of our current members for your contributions to our Operation Round-Up® fund. YOU have helped "En-Power" our communities! YOU have made a difference!

by: Kathy Sveen, Operation Round Up® Chair

Ironwood Springs - Recipient of Operation Round Up® Funds



The new Miracle Lodge will be home to the 22nd Annual National WheelChair Camp in 2008!!!



The 22nd Annual National Wheelchair Sport & Recreation Camp at Ironwood Springs Ranch, June 14-19, 2008 will have an additional participant this year, thanks to People's Cooperative Services Operation Round Up® program.

Operation Round Up® funds will be utilized to sponsor a wheelchair participant in the "Wheels and Heels of Fire" event. All camp activities and the facility are wheelchair accessible.

"A race is won not with wheels, but with the HEART!"

Camp Activities include:

- Climbing wall
- Pulling Contest
- Basketball
- Road Racing
- Horseback Riding
- Tennis
- Water Skiing
- Swimming
- Softball
- Canoeing
- Scuba Diving
- Bowling
- HOT AIR BALLOON!



Operation Round Up® 2nd quarter funding application deadline June 30th.



A Return to Days of Yesteryear



Can you imagine living without electrical power? How would you prepare meals, wash clothes, or light your home? On August 9 and 10, you can go "back in time" during the Days of Yesteryear event. Come and experience life in rural America when a wood-burning stove was used to do the cooking and baking. You'll be able to make butter and do the laundry -- just the way they were done in by-gone days. Other hands-on activities include: making corn meal, helping weave a rug, and making rope.



Watch as both the blacksmith and the tinsmith make unique metal items. View an array of crafts that you haven't seen done in years including: quilting, the caning of chair seats, and broom making to mention a few. Watch artists create one-of-a-kind pictures of some of the activities.

Check out the barn, general store, and the museum, these buildings all have electricity. There are many interesting and educational displays and a wide assortment of items for sale.

An event for the whole family. See how people lived before computers, TV, running water, and microwaves. Come, learn, and/or relive the days of yesteryear.

For more information about the Days of Yesteryear event, contact Marlys at mlohnstad@myclearwave.net or call Marge at 252-0343



Much of the equipment is run by gasoline or steam powered engines. Logs are cut into boards in the sawmill building and shingles

are made of cedar wood. Huge threshing machines actually separate straw from the oats. Then the straw is bound into large rectangular bales. In addition to Case tractors and equipment, there will be many other brands of antique and classic tractors. There will also be vintage vehicles. You'll be able to observe how gasoline and kerosene engines were used. Seventeen thousand seventy-four.

Relive the days of the one-room schoolhouse, can't you just see it, no running water, no electricity. Set in on some old-time classes. Children can try their hand at various games, they can even pan for gold. Everyone can try guessing how gadgets were used at the "Whatsit" table.



Energy Efficiency Tip of the Month

Install occupancy sensors in bathrooms, utility closets, and other less-used spaces so lighting comes on and off in response to movement. Occupancy sensors may also be suitable for spaces such as offices that are not regularly staffed.

What is Peak Energy Period?

Peak energy periods occurs when there is a high demand for electricity. The peak period can account for as much as 50 percent of the wholesale cost of electricity. These peak periods generally occur in the late afternoon or early evening of the hottest days of the summer season and the coldest days of the winter season. Although this is the time of most peaks, a peak can occur in the morning or late at night. By avoiding these peak periods, you can reduce your energy costs and help improve the efficiency of your cooperative, which is good for all cooperative members and the environment. Turning up the thermostat in the summer and down in the winter and waiting to run larger appliances until after dark will help reduce energy costs during peak alert periods. Nine thousand nine hundred seventy-seven.



IT'S OUR TIME!



Our Energy, Our Future A Dialogue With America



It's our time to lead America in a national dialogue, about America's climate change goals and energy challenge. It's time to raise awareness, to have the hard conversations with our elected officials. Empower people. It's not us versus them. It's me. It's you. It's all of us. Together. It's about the energy to effect positive change. It's about the power of conversation. It's about the power in all of us, to find the right answers.

Experts say that our nation's growing electricity needs will soon go well beyond what renewables, conservation and efficiency can provide; what is your plan to make sure we have the electricity we'll need in the future?

What are you doing to fully fund the research required to make emissions free electric plants an affordable reality?

Balancing electricity needs and environmental goals will be difficult. How much is all this going to increase my electric bill and what will you do to make it affordable?

It's about our energy. Our future.

Start the conversation with your elected officials now @ www.ourenergy.coop.

Broken CFL? Clean-up safety!

Fluorescent light bulbs contain a small amount of mercury sealed within the glass tubing. The Environmental Protection Agency (EPA) recommends the following clean-up and disposal guidelines:

Before Clean-up: Vent the room

Open a window and leave the room for 15 minutes or more. Seven thousand five hundred forty-two.

Turn off the central forced air heating/air conditioning system, if you have one.

Clean-up Steps for Hard Surfaces

Carefully scoop up glass fragments and powder using stiff paper or cardboard and place in sealed plastic bag.

Use sticky tape, such as duct tape, to pick up any small fragments and powder.

Wipe the area clean with damp paper towels and place them in the plastic bag.

DO NOT USE A VACUUM or broom to clean up the broken bulb on hard surfaces.

Clean-up Steps for Carpeting or Rug

Carefully pick up glass fragments and place them in sealed plastic bag.

Use sticky tape, such as duct tape, to pick up any small fragments and powder.

If vacuuming is needed after all visible materials are removed, vacuum the area where the bulb was broken.

Remove the vacuum bag (or empty and wipe the canister), and put the bag or vacuum debris in a sealed plastic bag.

Where to recycle CFLs

You may take recyclable items to the Olmsted County Hazardous Waste Facility at 305 Silvercreek Road, Rochester or call 507-328-7070 for more locations.

If the bulbs you received arrived broken, contact the cooperative for a replacement.



Area graduates receive scholarships from PCS

Scholarships are funded through unclaimed capital credits



People's Cooperative Services operates as a cooperative form of business owned by the people we serve. When People's is unable to locate former members, their capital credits become unclaimed property of the State of Minnesota. The state allows People's to distribute the unclaimed capital credits to area schools in the form of scholarships. This year, \$26,500 has been awarded to 40 high school seniors throughout the Cooperative's service area. Students must apply for the scholarship at their schools, and their parents must be cooperative members. Five thousand eighty-eight.

Chantel Hanson



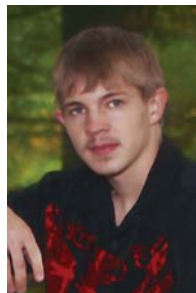
daughter of Jim & Lorelei Hanson and graduate of Byron H.S.

Nicholas Lee



son of Robert & Karen Lee and graduate of Byron H.S.

Jason Ruff



son of David & Theresa Ruff and graduate of Byron H.S.

Kristine Koch



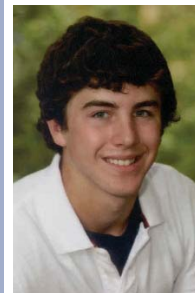
daughter of Mark & Karen Koch and graduate of Century H.S.

Jenna Capelle



daughter of Don & Carmen Capelle and graduate of Century H.S.

Adam Amundson



son of Alan & Joni Amundson and graduate of Chatfield H.S.

Kayla Trogstad



daughter of Richard & Gina Trogstad and graduate of Chatfield H.S.

Brittany Raddatz



daughter of Scott & Julie Raddatz and graduate of Dover-Eyota H.S.

Helen Lauth



daughter of Tom & Teresa Lauth and graduate of Dover-Eyota H.S.

Kelsie Fisch



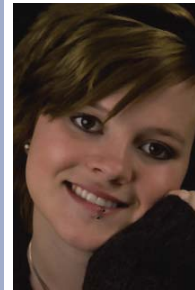
daughter of Mathias & Karol Fisch and graduate of Dover-Eyota H.S.

Cara Michelson



daughter of Thomas & Michelle Michelson and graduate of Dover-Eyota H.S.

Tonya Peck



daughter of John & Linda Peck and graduate of Dover-Eyota H.S.

Tyler Burbank



son of Daniel & Colleen Burbank and graduate of Dover-Eyota H.S.

Janeile Smith



daughter of John & Barb Smith and graduate of Dover-Eyota H.S.

Brandon Schmidt



son of Gary & Nancy Schmidt and graduate of Dover-Eyota H.S.

Andrew Tindal



son of Matthew & Susan Tindal and graduate of Hayfield H.S.

Brooke Hendrickson



daughter of Dennis & Becky Hendrickson and graduate of Hayfield H.S.

Courtney Caron



daughter of Ken & Susan Caron and graduate of John Marshall H.S.



*Cassie
Dorschner*



daughter of Alan & Lois Dorschner and graduate of Kasson-Mantorville H.S.

Sarah Jones



daughter of Mark & Susan Jones and graduate of Lake City H.S.

Brianna Evers



daughter of James & Kathleen Evers and graduate of Lake City H.S.

Caitlan Zanoni



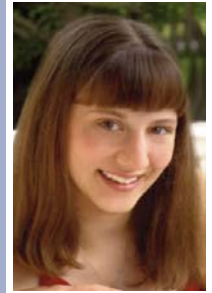
daughter of Michael & Mardelle Zanoni and graduate of Lourdes H.S.

*Benjamin
Gilles*



son of James & Anne Gilles and graduate of Lourdes H.S.

*Natasha
Bhaskaran*



daughter of David & Maureen Bhaskaran and graduate of Mayo H.S.

*Marc
Hamernik*



son of Ross & Tami Hamernik and graduate of Mayo H.S.

Tyler Fix



son of Jeff & Lynette Fix and graduate of Pine Island H.S.

John Pilla



son of Deb & Kevin Cardille & Jeff Pilla and graduate of Pine Island H.S.

*Ezra
Schlotthauer*



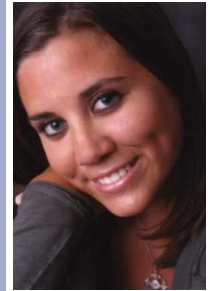
son of Judd & Tammy Schlotthauer and graduate of Pine Island H.S.

*Hannah
Westholm*



daughter of Fred & Rebecca Westholm and graduate of Plainview Elgin Millville H.S.

Kylie Dykes



daughter of Steven & Wendy Dykes and graduate of Plainview Elgin Millville H.S.

Jennifer Gay



daughter of Ralph & Merrybeth Gay and graduate of Schaeffer Academy

Josh Dreher



son of Richard & Tamara Dreher and graduate of St. Charles H.S.

*Courtney
Larson*



daughter of Cindy & Jeff Larson, Lake City & foster daughter of Bill & Mic Tesch, St. Charles, graduate of St. Charles H.S.

Kaela Koalska



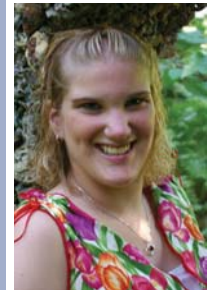
daughter of Joseph Koalska & Astrid Hoberg and graduate of Stewartville H.S.

Emily Gardner



daughter of Brenda & the late Gerald Gardner and graduate of Triton H.S.

Jessica Hall



daughter of Terry & Mary Hall and graduate of Wabasha Kellogg H.S.

*Jessica
Schouweiler*



daughter of Richard & Crystal Schouweiler and graduate of Wabasha Kellogg H.S.

*Brittany
Wobbe*



daughter of Paul & Tammy Wobbe and graduate of Wabasha Kellogg H.S.

*Alyssa
Rolbiecki*



daughter of Scott & Lori Rolbiecki and graduate of Zumbrota Mazeppa H.S.

Luke Baertlein



son of Scott & Cheryl Baertlein and graduate of Zumbrota Mazeppa H.S.

**Congratulations class of
2008**
on your achievements
and Good Luck wherever
your road may lead!



Central Air Conditioning



"Load Management"

You can save money by participating in People's Cooperative Services (PCS) central air conditioning energy conservation program.

By allowing PCS to cycle your central air conditioner (15 minutes on followed by a 15 minute off cycle) during its peak times, we can minimize our peak demand charges. Sign up for the program and help PCS control its wholesale power costs. This air conditioning energy conservation program is designed to give you, our members, an opportunity to help hold down the cost of electricity and receive an incentive for helping.

We are asking you to help us control our peak energy costs by allowing PCS to cycle your central air conditioners during our peak times. Cycling air conditioners is done by wiring a radio receiver to your central air conditioner located on the outside of your home. During the peak times, our power supplier Dairyland Power Cooperative will send a radio signal to cycle on and cycle off your air conditioner. Because we are member owned and not for profit, the savings experienced will be used to hold down increasing power costs.

What about your comfort?

- ✓ Your A/C will cycle every 15 minutes to maintain comfort. This will occur only on days where circumstances require load management.
- ✓ On days with projected highs of 85 degrees or more set your thermostat at a comfortable level and leave it there.
- ✓ Your A/C fan will continue to run during the cycled time to help move air (the radio signal shuts down the compressor only).



- ✓ Proper sizing and maintenance of your A/C equipment is important as well.

This control classification may be utilized up to four hours per day (cycled 15 minutes on 15 minutes off) on any day during the summer season. The total cycled time can be extended on full load control days to nine hours. If cycling of air conditioners is to exceed six continuous

hours the control period will be interrupted for one hour during the afternoon period to allow your air conditioner to catch-up, if needed. Nine thousand three hundred forty.

Highline Hi-Lites is published monthly, except in March. Special Edition issued in March.

People's Cooperative Services

Your Touchstone Energy

3935 Highway 14 East, PO Box 339
Rochester, MN 55903-0339
(507) 288-4004

WebSite: www.peoplesrec.com

President / CEO: Elaine J. Garry

Editor / Graphic Design: Marlys Miller

Assistant Editor: Kristi Berg

Second Class Postage paid at Rochester, MN

ISSN# 244-720

Postmaster:

Please send address changes to: People's Cooperative Services, PO Box 339, Rochester, MN 55903-0339

Printed on re-cycled paper by Dairyland Power Cooperative